



Sox-12 Polyclonal Antibody

Catalog No	BYab-02029
Isotype	IgG
Reactivity	Human;Mouse
Applications	IHC;IF;ELISA
Gene Name	SOX12
Protein Name	Transcription factor SOX-12
Immunogen	The antiserum was produced against synthesized peptide derived from human SOX12. AA range:71-120
Specificity	Sox-12 Polyclonal Antibody detects endogenous levels of Sox-12 protein.
Formulation	Liquid in PBS containing 50% glycerol, 0.5% BSA and 0.02% sodium azide.
Source	Polyclonal, Rabbit,IgG
Purification	The antibody was affinity-purified from rabbit antiserum by affinity-chromatography using epitope-specific immunogen.
Dilution	IHC: 1/100 - 1/300. ELISA: 1/20000.. IF 1:50-200
Concentration	1 mg/ml
Purity	≥90%
Storage Stability	-20°C/1 year
Synonyms	SOX12; SOX22; Transcription factor SOX-12; Protein SOX-22
Observed Band	
Cell Pathway	Nucleus .
Tissue Specificity	Expressed most abundantly in the CNS (PubMed:9215677). Expressed in the heart, pancreas, thymus, testis and ovary (PubMed:9215677). Weakly expressed in brain, placenta, lung, liver, skeletal muscle, kidney, spleen, prostate, small intestine, colon, and peripheral blood lymphocytes (PubMed:9215677).
Function	function:Binds to the sequence 5'-AACAAAT-3'.,similarity:Contains 1 HMG box DNA-binding domain.,tissue specificity:Expressed most abundantly in the CNS. Also expressed in fetal brain and kidney and adult heart, pancreas, testis and ovary. Other tissues were only weakly positive.,
Background	Members of the SOX family of transcription factors are characterized by the presence of a DNA-binding high mobility group (HMG) domain, homologous to the HMG box of sex-determining region Y (SRY). Forming a subgroup of the HMG domain superfamily, SOX proteins have been implicated in cell fate decisions in a

Nanjing BYabscience technology Co.,Ltd



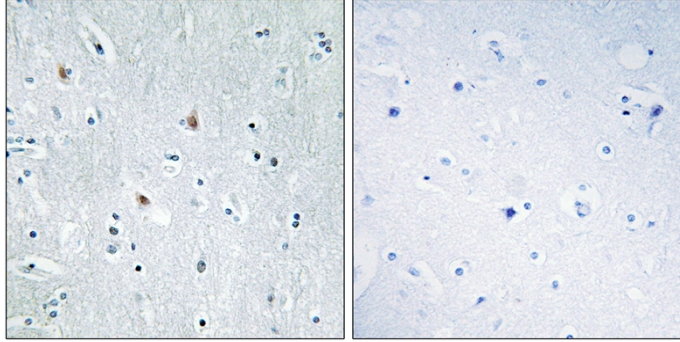
diverse range of developmental processes. SOX transcription factors have diverse tissue-specific expression patterns during early development and have been proposed to act as target-specific transcription factors and/or as chromatin structure regulatory elements. The protein encoded by this gene was identified as a SOX family member based on conserved domains, and its expression in various tissues suggests a role in both differentiation and maintenance of several cell types. [provided by RefSeq, Jan 2013],

matters needing attention

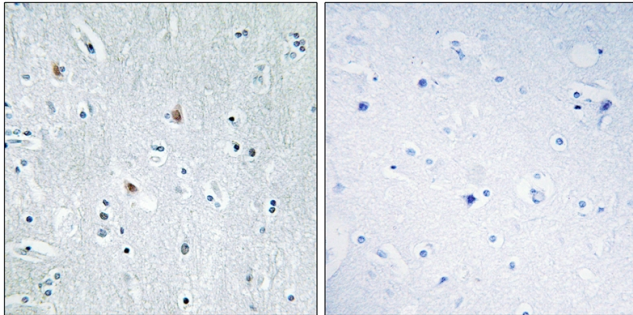
Avoid repeated freezing and thawing!

Usage suggestions

This product can be used in immunological reaction related experiments. For more information, please consult technical personnel.



Products Images



Immunohistochemistry analysis of paraffin-embedded human brain tissue, using SOX12 Antibody. The picture on the right is blocked with the synthesized peptide.