



SFRS11 Polyclonal Antibody

Catalog No	BYab-02009
Isotype	IgG
Reactivity	Human;Mouse
Applications	WB;ELISA;IHC
Gene Name	SRSF11
Protein Name	Serine/arginine-rich splicing factor 11
Immunogen	The antiserum was produced against synthesized peptide derived from human SFRS11. AA range:211-260
Specificity	SFRS11 Polyclonal Antibody detects endogenous levels of SFRS11 protein.
Formulation	Liquid in PBS containing 50% glycerol, 0.5% BSA and 0.02% sodium azide.
Source	Polyclonal, Rabbit,IgG
Purification	The antibody was affinity-purified from rabbit antiserum by affinity-chromatography using epitope-specific immunogen.
Dilution	WB 1:500-2000;IHC-p 1:50-300; ELISA 2000-20000
Concentration	1 mg/ml
Purity	≥90%
Storage Stability	-20°C/1 year
Synonyms	SRSF11; SFRS11; Serine/arginine-rich splicing factor 11; Arginine-rich 54 kDa nuclear protein; p54; Splicing factor; arginine/serine-rich 11
Observed Band	54kD
Cell Pathway	Nucleus. Colocalizes with spliceosome components.
Tissue Specificity	Colon endothel,Epithelium,Fetal brain,Hepatoma,Human fetal
Function	function:May function in pre-mRNA splicing.,similarity:Belongs to the splicing factor SR family.,similarity:Contains 1 RRM (RNA recognition motif) domain.,subcellular location:Colocalizes with spliceosome components.,subunit:Interacts with PUF60.,
Background	This gene encodes 54-kD nuclear protein that contains an arginine/serine-rich region similar to segments found in pre-mRNA splicing factors. Although the function of this protein is not yet known, structure and immunolocalization data suggest that it may play a role in pre-mRNA processing. Alternative splicing results in multiple transcript variants encoding different proteins. In addition, a pseudogene of this gene has been found on chromosome 12.[provided by

Nanjing BYabscience technology Co.,Ltd



RefSeq, Sep 2010],

matters needing attention

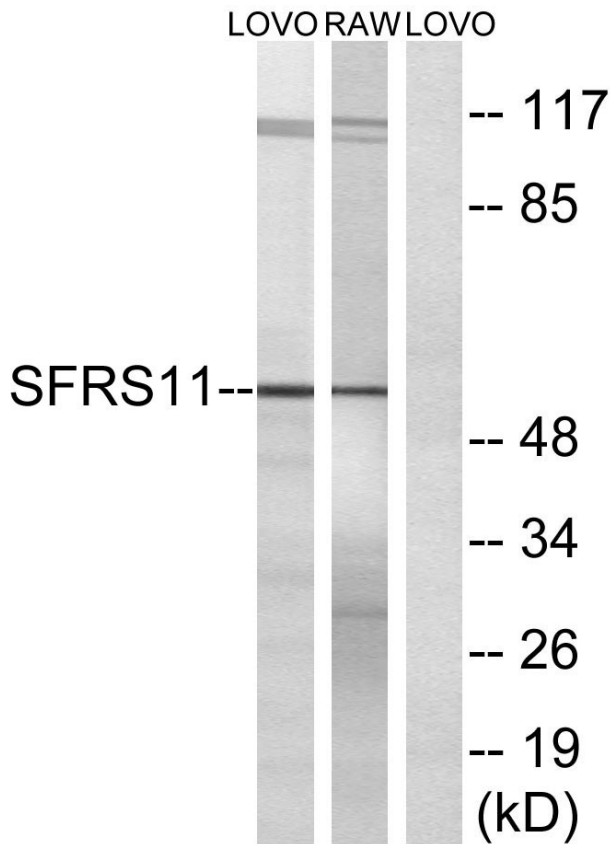
Avoid repeated freezing and thawing!

Usage suggestions

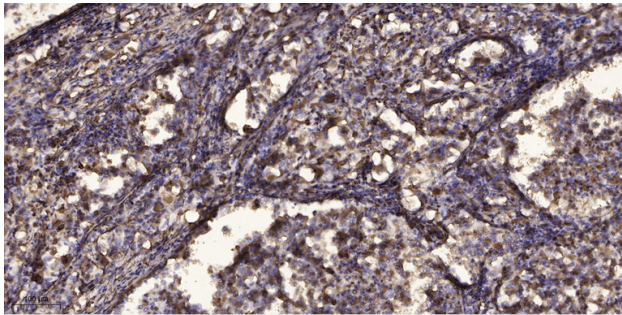
This product can be used in immunological reaction related experiments. For more information, please consult technical personnel.



Products Images



Western blot analysis of lysates from LOVO and RAW264.7 cells, using SFRS11 Antibody. The lane on the right is blocked with the synthesized peptide.



Immunohistochemical analysis of paraffin-embedded human Squamous cell carcinoma of lung. 1, Antibody was diluted at 1:200(4° overnight). 2, Tris-EDTA,pH9.0 was used for antigen retrieval. 3,Secondary antibody was diluted at 1:200(room temperature, 45min).