



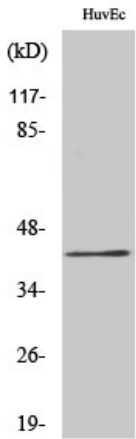
# RRS1 Polyclonal Antibody

<b>Catalog No</b>	BYab-01998
<b>Isotype</b>	IgG
<b>Reactivity</b>	Human;Mouse;Rat
<b>Applications</b>	WB;IHC;IF;ELISA
<b>Gene Name</b>	RRS1
<b>Protein Name</b>	Ribosome biogenesis regulatory protein homolog
<b>Immunogen</b>	The antiserum was produced against synthesized peptide derived from human RRS1. AA range:254-303
<b>Specificity</b>	RRS1 Polyclonal Antibody detects endogenous levels of RRS1 protein.
<b>Formulation</b>	Liquid in PBS containing 50% glycerol, 0.5% BSA and 0.02% sodium azide.
<b>Source</b>	Polyclonal, Rabbit,IgG
<b>Purification</b>	The antibody was affinity-purified from rabbit antiserum by affinity-chromatography using epitope-specific immunogen.
<b>Dilution</b>	WB: 1/500 - 1/2000. IHC: 1/100 - 1/300. ELISA: 1/10000.. IF 1:50-200
<b>Concentration</b>	1 mg/ml
<b>Purity</b>	≥90%
<b>Storage Stability</b>	-20°C/1 year
<b>Synonyms</b>	RRS1; KIAA0112; RRR; Ribosome biogenesis regulatory protein homolog
<b>Observed Band</b>	41kD
<b>Cell Pathway</b>	Nucleus, nucleolus .
<b>Tissue Specificity</b>	Bone marrow,Cervix carcinoma,Lung,Uterus,
<b>Function</b>	function:Involved in ribosome biogenesis.,similarity:Belongs to the RRS1 family.,
<b>Background</b>	function:Involved in ribosome biogenesis.,similarity:Belongs to the RRS1 family.,
<b>matters needing attention</b>	Avoid repeated freezing and thawing!
<b>Usage suggestions</b>	This product can be used in immunological reaction related experiments. For more information, please consult technical personnel.

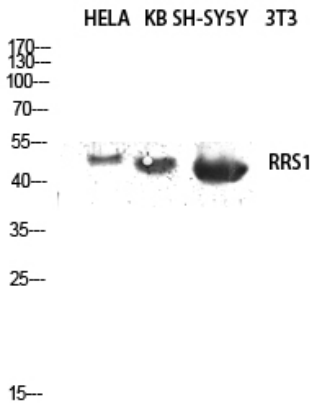
**Nanjing BYabscience technology Co.,Ltd**



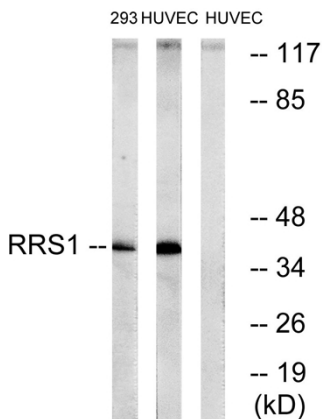
## Products Images



Western Blot analysis of various cells using RRS1 Polyclonal Antibody diluted at 1:2000 cells nucleus extracted by Minute TM Cytoplasmic and Nuclear Fractionation kit (SC-003, Inventbiotech, MN, USA).

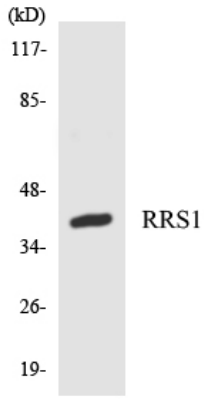


Western blot analysis of HELA KB SH-SY5Y lysis using RRS1 antibody. Antibody was diluted at 1:2000 cells nucleus extracted by Minute TM Cytoplasmic and Nuclear Fractionation kit (SC-003, Inventbiotech, MN, USA).

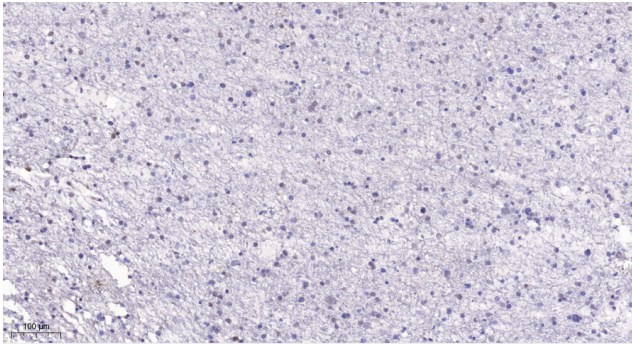


Western blot analysis of lysates from HUVEC and 293 cells, using RRS1 Antibody. The lane on the right is blocked with the synthesized peptide.

Nanjing BYabscience technology Co.,Ltd



Western blot analysis of the lysates from HT-29 cells using RRS1 antibody.



Immunohistochemical analysis of paraffin-embedded human brain. 1, Tris-EDTA, pH9.0 was used for antigen retrieval. 2 Antibody was diluted at 1:200(4° overnight).3, Secondary antibody was diluted at 1:200(room temperature, 45min).