



Rrn3 Polyclonal Antibody

Catalog No	BYab-01997
Isotype	IgG
Reactivity	Human;Rat;Mouse;
Applications	WB;IHC;IF;ELISA
Gene Name	RRN3
Protein Name	RNA polymerase I-specific transcription initiation factor RRN3
Immunogen	The antiserum was produced against synthesized peptide derived from human TIF-IA. AA range:602-651
Specificity	Rrn3 Polyclonal Antibody detects endogenous levels of Rrn3 protein.
Formulation	Liquid in PBS containing 50% glycerol, 0.5% BSA and 0.02% sodium azide.
Source	Polyclonal, Rabbit,IgG
Purification	The antibody was affinity-purified from rabbit antiserum by affinity-chromatography using epitope-specific immunogen.
Dilution	WB: 1/500 - 1/2000. IHC: 1/100 - 1/300. ELISA: 1/5000.. IF 1:50-200
Concentration	1 mg/ml
Purity	≥90%
Storage Stability	-20°C/1 year
Synonyms	RRN3; TIFIA; RNA polymerase I-specific transcription initiation factor RRN3; Transcription initiation factor IA; TIF-IA
Observed Band	70kD
Cell Pathway	Nucleus, nucleolus .
Tissue Specificity	Hippocampus,Kidney,Pooled,Spleen,
Function	function:Required for efficient transcription initiation by RNA polymerase I.,similarity:Belongs to the RRN3 family.,
Background	function:Required for efficient transcription initiation by RNA polymerase I.,similarity:Belongs to the RRN3 family.,
matters needing attention	Avoid repeated freezing and thawing!

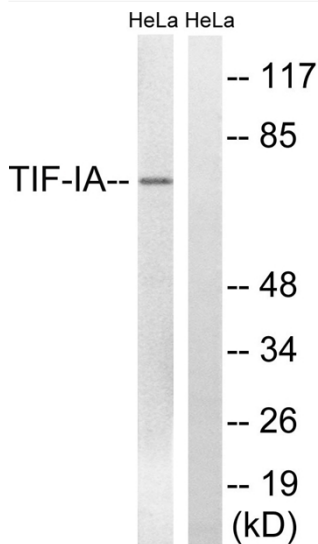
Nanjing BYabscience technology Co.,Ltd



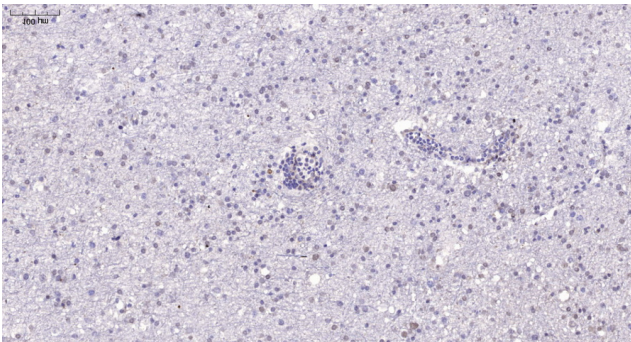
Usage suggestions

This product can be used in immunological reaction related experiments. For more information, please consult technical personnel.

Products Images



Western blot analysis of lysates from HeLa cells, treated with calyculinA 50ng/ml 30', using TIF-IA Antibody. The lane on the right is blocked with the synthesized peptide.



Immunohistochemical analysis of paraffin-embedded human brain. 1, Tris-EDTA, pH9.0 was used for antigen retrieval. 2 Antibody was diluted at 1:200(4° overnight). 3, Secondary antibody was diluted at 1:200(room temperature, 45min).