



RPAP2 Polyclonal Antibody

| | |
|---------------------------|---|
| Catalog No | BYab-01994 |
| Isotype | IgG |
| Reactivity | Human;Rat;Mouse; |
| Applications | WB;ELISA |
| Gene Name | RPAP2 |
| Protein Name | Putative RNA polymerase II subunit B1 CTD phosphatase RPAP2 |
| Immunogen | The antiserum was produced against synthesized peptide derived from human RPAP2. AA range:460-509 |
| Specificity | RPAP2 Polyclonal Antibody detects endogenous levels of RPAP2 protein. |
| Formulation | Liquid in PBS containing 50% glycerol, 0.5% BSA and 0.02% sodium azide. |
| Source | Polyclonal, Rabbit,IgG |
| Purification | The antibody was affinity-purified from rabbit antiserum by affinity-chromatography using epitope-specific immunogen. |
| Dilution | Western Blot: 1/500 - 1/2000. ELISA: 1/10000. Not yet tested in other applications. |
| Concentration | 1 mg/ml |
| Purity | ≥90% |
| Storage Stability | -20°C/1 year |
| Synonyms | RPAP2; C1orf82; Putative RNA polymerase II subunit B1 CTD phosphatase RPAP2; RNA polymerase II-associated protein 2 |
| Observed Band | 70kD |
| Cell Pathway | Cytoplasm . Nucleus . Shuttles between the cytoplasm and the nucleus in a CRM1-dependent manner. |
| Tissue Specificity | Brain, |
| Function | function:Forms an interface between the RNA polymerase II enzyme and chaperone/scaffolding protein, suggesting that it is required to connect RNA polymerase II to regulators of protein complex formation.,similarity:Belongs to the RPAP2 family.,subunit:Tightly associated with the RNA polymerase II complex., |
| Background | function:Forms an interface between the RNA polymerase II enzyme and chaperone/scaffolding protein, suggesting that it is required to connect RNA polymerase II to regulators of protein complex formation.,similarity:Belongs to the RPAP2 family.,subunit:Tightly associated with the RNA polymerase II complex., |

Nanjing BYabscience technology Co.,Ltd



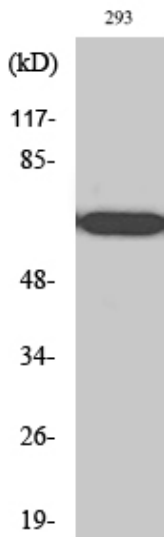
matters needing attention

Avoid repeated freezing and thawing!

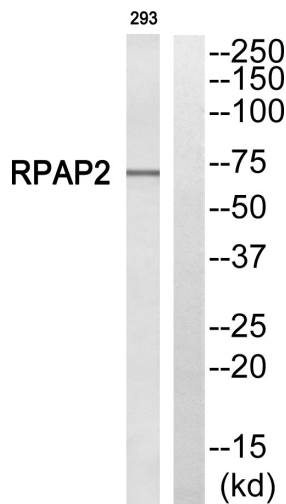
Usage suggestions

This product can be used in immunological reaction related experiments. For more information, please consult technical personnel.

Products Images



Western Blot analysis of various cells using RPAP2 Polyclonal Antibody



Western blot analysis of RPAP2 Antibody. The lane on the right is blocked with the RPAP2 peptide.

Nanjing BYabscience technology Co.,Ltd