



RPA40 Polyclonal Antibody

Catalog No	BYab-01993
Isotype	IgG
Reactivity	Human;Mouse
Applications	WB;ELISA
Gene Name	POLR1C
Protein Name	DNA-directed RNA polymerases I and III subunit RPAC1
Immunogen	The antiserum was produced against synthesized peptide derived from human POLR1C. AA range:101-150
Specificity	RPA40 Polyclonal Antibody detects endogenous levels of RPA40 protein.
Formulation	Liquid in PBS containing 50% glycerol, 0.5% BSA and 0.02% sodium azide.
Source	Polyclonal, Rabbit,IgG
Purification	The antibody was affinity-purified from rabbit antiserum by affinity-chromatography using epitope-specific immunogen.
Dilution	Western Blot: 1/500 - 1/2000. ELISA: 1/40000. Not yet tested in other applications.
Concentration	1 mg/ml
Purity	≥90%
Storage Stability	-20°C/1 year
Synonyms	POLR1C; POLR1E; DNA-directed RNA polymerases I and III subunit RPAC1; DNA-directed RNA polymerase I subunit C; RNA polymerases I and III subunit AC1; AC40; DNA-directed RNA polymerases I and III 40 kDa polypeptide; RPA40; RPA39; RPC40
Observed Band	39kD
Cell Pathway	Nucleus .
Tissue Specificity	Brain,Ovarian carcinoma,Placenta,Umbilical cord blood,
Function	function:DNA-dependent RNA polymerase catalyzes the transcription of DNA into RNA using the four ribonucleoside triphosphates as substrates. Common component of RNA polymerases I and III which synthesize ribosomal RNA precursors and small RNAs, such as 5S rRNA and tRNAs, respectively. RPAC1 is part of the Pol core element with the central large cleft and probably a clamp element that moves to open and close the cleft.,similarity:Belongs to the archaeal rpoD/eukaryotic RPB3 RNA polymerase subunit family.,subunit:Component of the

Nanjing BYabscience technology Co.,Ltd



RNA polymerase I (Pol I) and RNA polymerase III (Pol III) complexes consisting of at least 13 and 17 subunits, respectively.,

Background

The protein encoded by this gene is a subunit of both RNA polymerase I and RNA polymerase III complexes. The encoded protein is part of the Pol core element. Mutations in this gene have been associated with Treacher Collins syndrome (TCS) and hypomyelinating leukodystrophy 11. Alternative splicing results in multiple transcript variants. [provided by RefSeq, Jan 2016],

matters needing attention

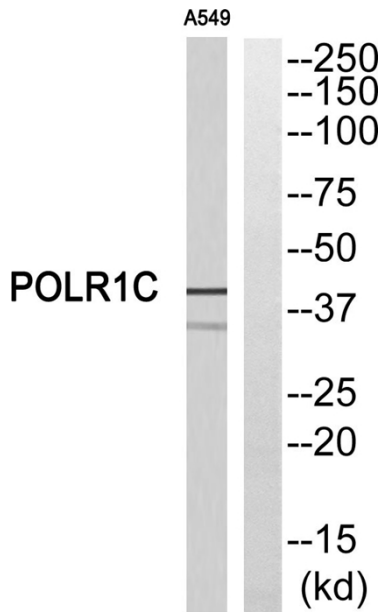
Avoid repeated freezing and thawing!

Usage suggestions

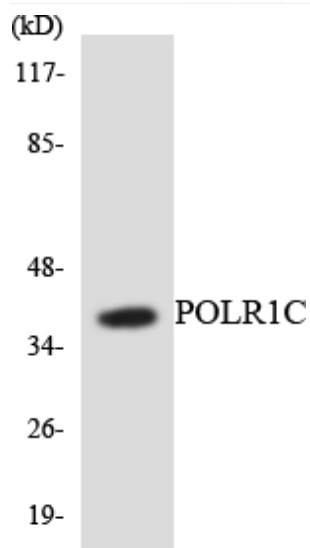
This product can be used in immunological reaction related experiments. For more information, please consult technical personnel.



Products Images



Western blot analysis of POLR1C Antibody. The lane on the right is blocked with the POLR1C peptide.



Western blot analysis of the lysates from HepG2 cells using POLR1C antibody.