



RoXaN Polyclonal Antibody

Catalog No	BYab-01990
Isotype	IgG
Reactivity	Human;Rat;Mouse;
Applications	WB;IHC;IF;ELISA
Gene Name	ZC3H7B
Protein Name	Zinc finger CCCH domain-containing protein 7B
Immunogen	The antiserum was produced against synthesized peptide derived from human ZC3H7B. AA range:851-900
Specificity	RoXaN Polyclonal Antibody detects endogenous levels of RoXaN protein.
Formulation	Liquid in PBS containing 50% glycerol, 0.5% BSA and 0.02% sodium azide.
Source	Polyclonal, Rabbit,IgG
Purification	The antibody was affinity-purified from rabbit antiserum by affinity-chromatography using epitope-specific immunogen.
Dilution	WB: 1/500 - 1/2000. IHC: 1/100 - 1/300. ELISA: 1/10000.. IF 1:50-200
Concentration	1 mg/ml
Purity	≥90%
Storage Stability	-20°C/1 year
Synonyms	ZC3H7B; KIAA1031; Zinc finger CCCH domain-containing protein 7B; Rotavirus 'X'-associated non-structural protein; RoXaN
Observed Band	111kD
Cell Pathway	Nucleus . Nuclear localization seems to be depleted upon rotavirus A infection.
Tissue Specificity	Brain,Lung,Trachea,Uterus,
Function	similarity:Contains 1 C2H2-type zinc finger.,similarity:Contains 3 TPR repeats.,similarity:Contains 4 C3H1-type zinc fingers.,subcellular location:Nuclear localization seems to be depleted upon rotavirus A infection.,subunit:Interacts (via LD motif) with rotavirus A NSP3 (via the coiled-coil region).,
Background	This gene encodes a protein that contains a tetratricopeptide repeat domain. The encoded protein also interacts with the rotavirus non-structural protein NSP3. [provided by RefSeq, Jul 2008],

Nanjing BYabscience technology Co.,Ltd



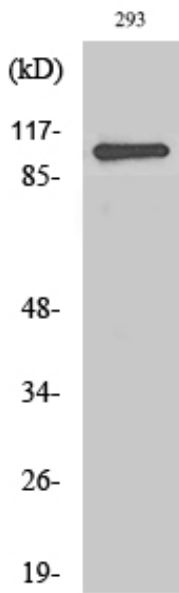
matters needing attention

Avoid repeated freezing and thawing!

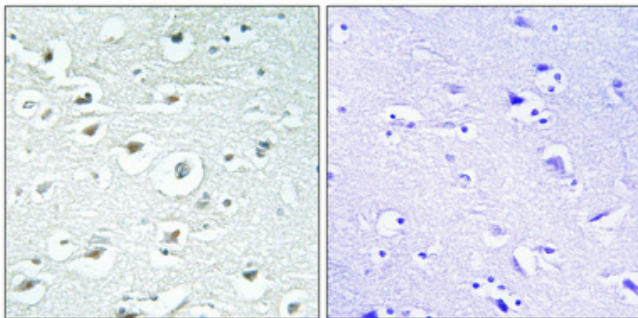
Usage suggestions

This product can be used in immunological reaction related experiments. For more information, please consult technical personnel.

Products Images

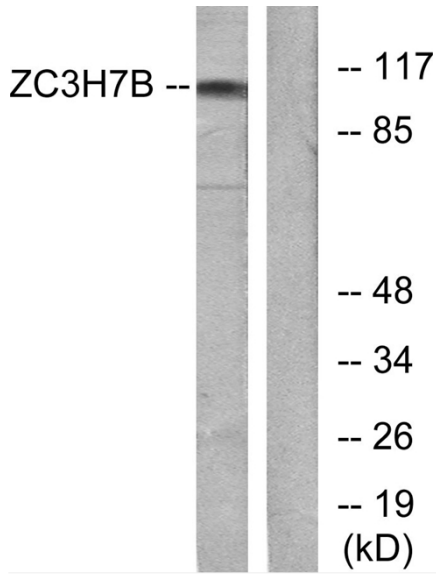


Western Blot analysis of various cells using RoXaN Polyclonal Antibody cells nucleus extracted by Minute TM Cytoplasmic and Nuclear Fractionation kit (SC-003, Inventbiotech, MN, USA).

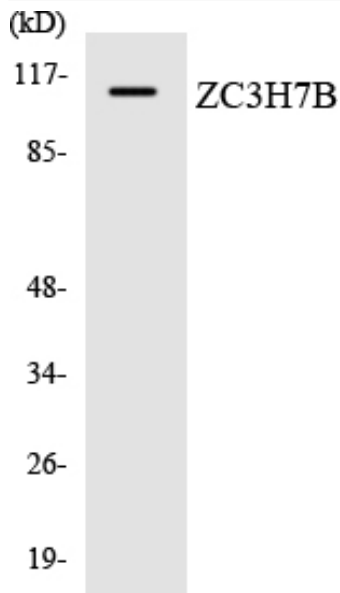


Immunohistochemical analysis of paraffin-embedded Human brain. Antibody was diluted at 1:100(4° overnight). High-pressure and temperature Tris-EDTA, pH8.0 was used for antigen retrieval. Negative control (right) obtained from antibody was pre-absorbed by immunogen peptide.

Nanjing BYabscience technology Co.,Ltd



Western blot analysis of lysates from 293 cells, using ZC3H7B Antibody. The lane on the right is blocked with the synthesized peptide.



Western blot analysis of the lysates from HUVEC cells using ZC3H7B antibody.