



Ribosomal Protein L10L Polyclonal Antibody

Catalog No	BYab-01982
Isotype	IgG
Reactivity	Human;Monkey
Applications	WB;IHC;IF;ELISA
Gene Name	RPL10L
Protein Name	60S ribosomal protein L10-like
Immunogen	The antiserum was produced against synthesized peptide derived from human RPL10L. AA range:151-200
Specificity	Ribosomal Protein L10L Polyclonal Antibody detects endogenous levels of Ribosomal Protein L10L protein.
Formulation	Liquid in PBS containing 50% glycerol, 0.5% BSA and 0.02% sodium azide.
Source	Polyclonal, Rabbit,IgG
Purification	The antibody was affinity-purified from rabbit antiserum by affinity-chromatography using epitope-specific immunogen.
Dilution	WB: 1/500 - 1/2000. IHC: 1/100 - 1/300. ELISA: 1/10000.. IF 1:50-200
Concentration	1 mg/ml
Purity	≥90%
Storage Stability	-20°C/1 year
Synonyms	RPL10L; 60S ribosomal protein L10-like
Observed Band	20kD
Cell Pathway	Cytoplasm .
Tissue Specificity	Almost testis-specific (PubMed:12490704, PubMed:19333399, PubMed:28502657). Also expressed in pre- and postmenopausal ovary (PubMed:19333399).
Function	function:May play a role in compensating for the inactivated X-linked gene during spermatogenesis.,miscellaneous:This gene has no introns in its coding regions, and therefore was most likely produced by retrotransposition of the original X-linked gene during evolution.,similarity:Belongs to the ribosomal protein L10e family.,tissue specificity:Testis specific.,
Background	This gene encodes a protein sharing sequence similarity with ribosomal protein L10. It is not currently known whether the encoded protein is a functional ribosomal protein or whether it has evolved a function that is independent of the ribosome. This gene is intronless. [provided by RefSeq, Jul 2008],

Nanjing BYabscience technology Co.,Ltd



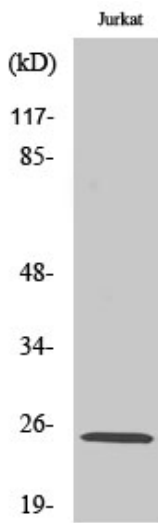
matters needing attention

Avoid repeated freezing and thawing!

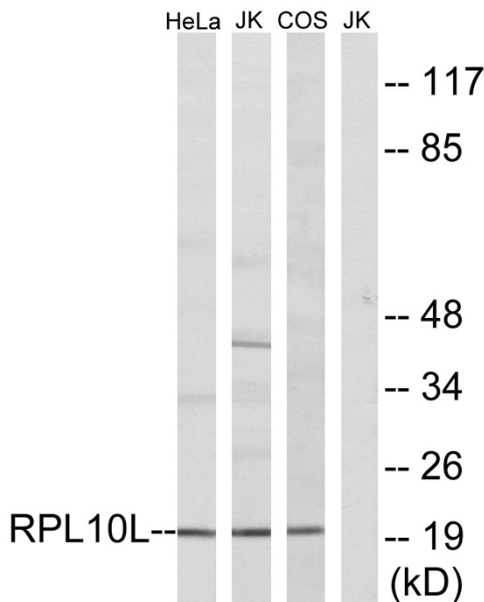
Usage suggestions

This product can be used in immunological reaction related experiments. For more information, please consult technical personnel.

Products Images

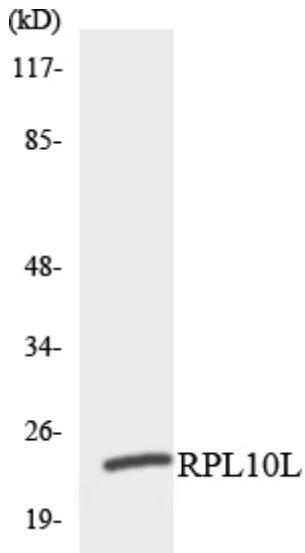


Western Blot analysis of various cells using Ribosomal Protein L10L Polyclonal Antibody diluted at 1:1000

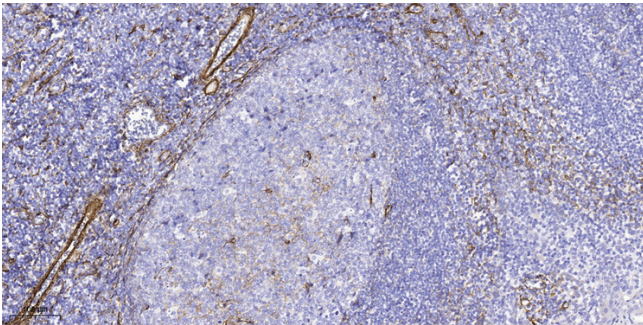


Western blot analysis of lysates from Jurkat, COS7, and HeLa cells, using RPL10L Antibody. The lane on the right is blocked with the synthesized peptide.

Nanjing BYabscience technology Co.,Ltd



Western blot analysis of the lysates from HUVEC cells using RPL10L antibody.



Immunohistochemical analysis of paraffin-embedded human tonsil. 1, Tris-EDTA, pH 9.0 was used for antigen retrieval. 2 Antibody was diluted at 1:200 (4° overnight). 3, Secondary antibody was diluted at 1:200 (room temperature, 45 min).