



RGAG1 Polyclonal Antibody

Catalog No	BYab-01981
Isotype	IgG
Reactivity	Human;Mouse
Applications	WB;ELISA
Gene Name	RGAG1
Protein Name	Retrotransposon gag domain-containing protein 1
Immunogen	The antiserum was produced against synthesized peptide derived from human RGAG1. AA range:1331-1380
Specificity	RGAG1 Polyclonal Antibody detects endogenous levels of RGAG1 protein.
Formulation	Liquid in PBS containing 50% glycerol, 0.5% BSA and 0.02% sodium azide.
Source	Polyclonal, Rabbit,IgG
Purification	The antibody was affinity-purified from rabbit antiserum by affinity-chromatography using epitope-specific immunogen.
Dilution	Western Blot: 1/500 - 1/2000. ELISA: 1/40000. Not yet tested in other applications.
Concentration	1 mg/ml
Purity	≥90%
Storage Stability	-20°C/1 year
Synonyms	RGAG1; KIAA1318; Retrotransposon gag domain-containing protein 1; Tumor antigen BJ-HCC-23
Observed Band	144kD
Cell Pathway	
Tissue Specificity	Brain,Carcinoma,
Function	
Background	RGAG1 (Retrotransposon Gag Domain Containing 1) is a Protein Coding gene. Diseases associated with RGAG1 include non-syndromic x-linked intellectual disability.
matters needing attention	Avoid repeated freezing and thawing!

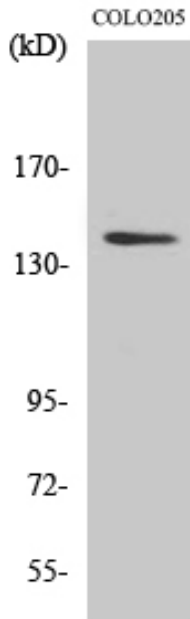
Nanjing BYabscience technology Co.,Ltd



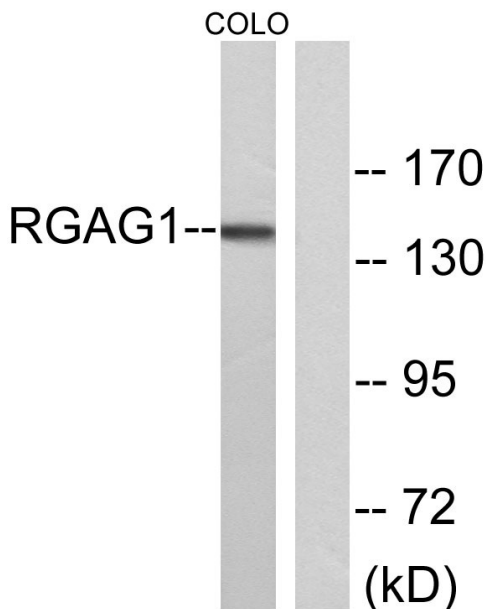
Usage suggestions

This product can be used in immunological reaction related experiments. For more information, please consult technical personnel.

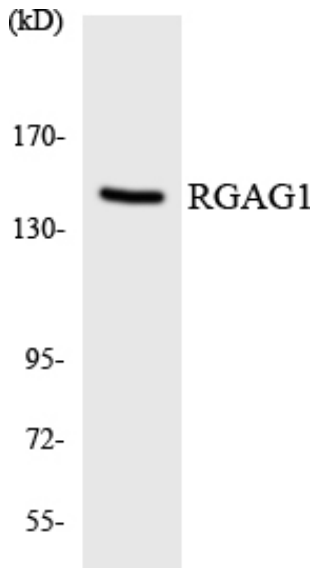
Products Images



Western Blot analysis of various cells using RGAG1 Polyclonal Antibody



Western blot analysis of lysates from COLO cells, using RGAG1 Antibody. The lane on the right is blocked with the synthesized peptide.



Western blot analysis of the lysates from HT-29 cells using RGAG1 antibody.