



# RECS1 Polyclonal Antibody

<b>Catalog No</b>	BYab-01972
<b>Isotype</b>	IgG
<b>Reactivity</b>	Human;Mouse;Rat
<b>Applications</b>	WB;IHC;IF;ELISA
<b>Gene Name</b>	TMBIM1
<b>Protein Name</b>	Protein lifeguard 3
<b>Immunogen</b>	The antiserum was produced against synthesized peptide derived from human TMBIM1. AA range:251-300
<b>Specificity</b>	RECS1 Polyclonal Antibody detects endogenous levels of RECS1 protein.
<b>Formulation</b>	Liquid in PBS containing 50% glycerol, 0.5% BSA and 0.02% sodium azide.
<b>Source</b>	Polyclonal, Rabbit,IgG
<b>Purification</b>	The antibody was affinity-purified from rabbit antiserum by affinity-chromatography using epitope-specific immunogen.
<b>Dilution</b>	WB: 1/500 - 1/2000. IHC: 1/100 - 1/300. ELISA: 1/40000.. IF 1:50-200
<b>Concentration</b>	1 mg/ml
<b>Purity</b>	≥90%
<b>Storage Stability</b>	-20°C/1 year
<b>Synonyms</b>	TMBIM1; LFG3; RECS1; PP1201; PSEC0158; Protein lifeguard 3; Protein RECS1 homolog; Transmembrane BAX inhibitor motif-containing protein 1
<b>Observed Band</b>	35kD
<b>Cell Pathway</b>	Membrane ; Multi-pass membrane protein . Lysosome membrane . Endosome membrane .
<b>Tissue Specificity</b>	Aorta,Brain,Colon,Pancreas,Placenta,Platelet,Tongue,Trachea
<b>Function</b>	similarity:Belongs to the BI1 family.,
<b>Background</b>	similarity:Belongs to the BI1 family.,
<b>matters needing attention</b>	Avoid repeated freezing and thawing!

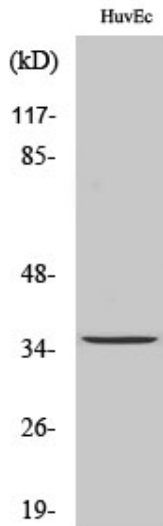
Nanjing BYabscience technology Co.,Ltd



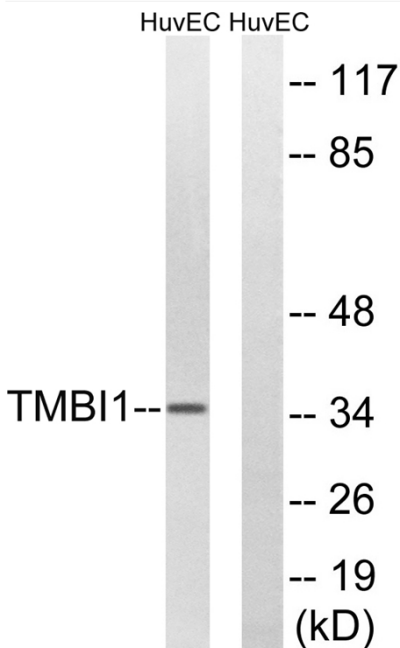
**Usage suggestions**

This product can be used in immunological reaction related experiments. For more information, please consult technical personnel.

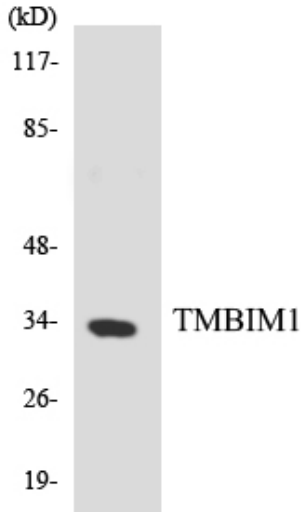
**Products Images**



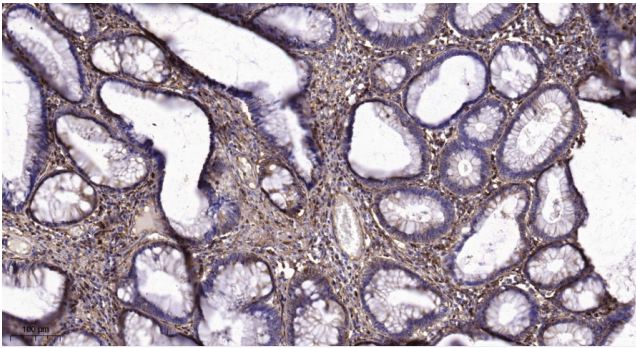
Western Blot analysis of various cells using RECS1 Polyclonal Antibody diluted at 1:1000



Western blot analysis of lysates from HUVEC cells, using TMBIM1 Antibody. The lane on the right is blocked with the synthesized peptide.



Western blot analysis of the lysates from K562 cells using TMBIM1 antibody.



Immunohistochemical analysis of paraffin-embedded human colon cancer. 1, Tris-EDTA, pH9.0 was used for antigen retrieval. 2 Antibody was diluted at 1:200(4° overnight). 3, Secondary antibody was diluted at 1:200(room temperature, 45min).