



# RCL Polyclonal Antibody

<b>Catalog No</b>	BYab-01971
<b>Isotype</b>	IgG
<b>Reactivity</b>	Human;Rat;Mouse;
<b>Applications</b>	WB;IHC
<b>Gene Name</b>	RCL
<b>Protein Name</b>	Deoxyribonucleoside 5'-monophosphate N-glycosidase
<b>Immunogen</b>	The antiserum was produced against synthesized peptide derived from human RCL. AA range:1-50
<b>Specificity</b>	RCL Polyclonal Antibody detects endogenous levels of RCL protein.
<b>Formulation</b>	Liquid in PBS containing 50% glycerol, 0.5% BSA and 0.02% sodium azide.
<b>Source</b>	Polyclonal, Rabbit,IgG
<b>Purification</b>	The antibody was affinity-purified from rabbit antiserum by affinity-chromatography using epitope-specific immunogen.
<b>Dilution</b>	WB 1:500-2000;IHC-p 1:50-300
<b>Concentration</b>	1 mg/ml
<b>Purity</b>	≥90%
<b>Storage Stability</b>	-20°C/1 year
<b>Synonyms</b>	RCL; C6orf108; Deoxyribonucleoside 5'-monophosphate N-glycosidase; c-Myc-responsive protein Rcl
<b>Observed Band</b>	22kD
<b>Cell Pathway</b>	Cytoplasm . Nucleus .
<b>Tissue Specificity</b>	Expressed at low levels in brain, colon, lung, peripheral blood leukocytes, placenta, small intestine, and thymus. Expressed at high levels in heart, kidney, liver, skeletal muscle and spleen. Overexpressed in a significant proportion of breast cancers.
<b>Function</b>	caution:The sequence shown here is derived from an Ensembl automatic analysis pipeline and should be considered as preliminary data.,function:May play a role during cellular proliferation and c-Myc-mediated transformation.,tissue specificity:Expression is elevated in lymphoid cells that overexpress c-Myc.,
<b>Background</b>	This gene was identified on the basis of its stimulation by c-Myc protein. The latter is a transcription factor that participates in the regulation of cell proliferation, differentiation, and apoptosis. The exact function of this gene is not known but

Nanjing BYabscience technology Co.,Ltd



studies in rat suggest a role in cellular proliferation and c-Myc-mediated transformation. Two alternative transcripts encoding different proteins have been described. [provided by RefSeq, Jul 2008],

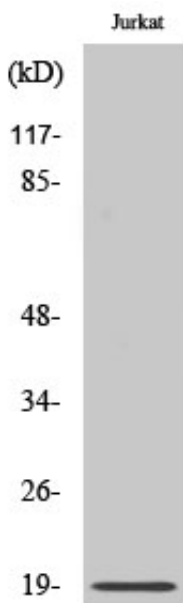
**matters needing attention**

Avoid repeated freezing and thawing!

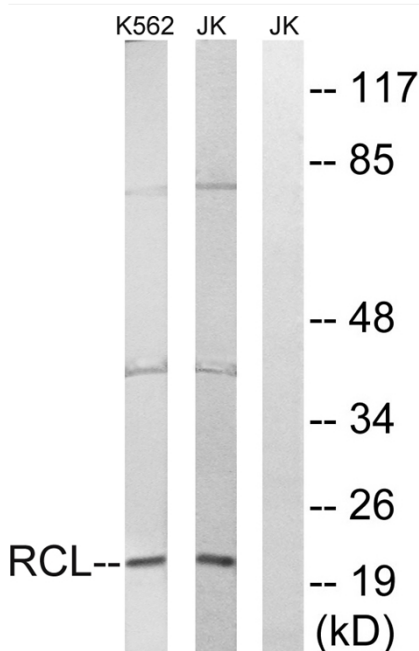
**Usage suggestions**

This product can be used in immunological reaction related experiments. For more information, please consult technical personnel.

**Products Images**

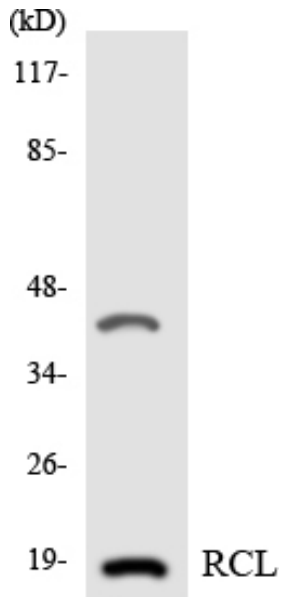


Western Blot analysis of various cells using RCL Polyclonal Antibody

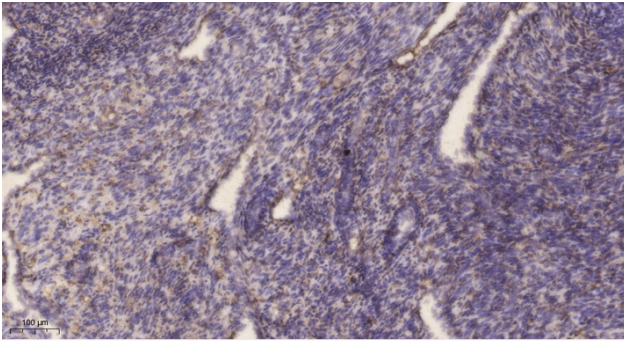


Western blot analysis of lysates from Jurkat and K562 cells, using RCL Antibody. The lane on the right is blocked with the synthesized peptide.

**Nanjing BYabscience technology Co.,Ltd**



Western blot analysis of the lysates from 293 cells using RCL antibody.



Immunohistochemical analysis of paraffin-embedded human uterus. 1, Antibody was diluted at 1:200(4° overnight). 2, Tris-EDTA,pH9.0 was used for antigen retrieval. 3,Secondary antibody was diluted at 1:200(room temperature, 45min).