



# RBM26 Polyclonal Antibody

<b>Catalog No</b>	BYab-01969
<b>Isotype</b>	IgG
<b>Reactivity</b>	Human;Mouse
<b>Applications</b>	WB;IHC;IF;ELISA
<b>Gene Name</b>	RBM26
<b>Protein Name</b>	RNA-binding protein 26
<b>Immunogen</b>	The antiserum was produced against synthesized peptide derived from human RBM26. AA range:711-760
<b>Specificity</b>	RBM26 Polyclonal Antibody detects endogenous levels of RBM26 protein.
<b>Formulation</b>	Liquid in PBS containing 50% glycerol, 0.5% BSA and 0.02% sodium azide.
<b>Source</b>	Polyclonal, Rabbit,IgG
<b>Purification</b>	The antibody was affinity-purified from rabbit antiserum by affinity-chromatography using epitope-specific immunogen.
<b>Dilution</b>	WB: 1/500 - 1/2000. ELISA: 1/10000.. IF 1:50-200
<b>Concentration</b>	1 mg/ml
<b>Purity</b>	≥90%
<b>Storage Stability</b>	-20°C/1 year
<b>Synonyms</b>	RBM26; C13orf10; RNA-binding protein 26; CTCL tumor antigen se70-2; RNA-binding motif protein 26
<b>Observed Band</b>	113kD
<b>Cell Pathway</b>	
<b>Tissue Specificity</b>	Adipose tissue,Amygdala,Embryo,Epithelium,Fetal liver,Lymph,Placenta,Terato
<b>Function</b>	similarity:Contains 1 C3H1-type zinc finger.,similarity:Contains 2 RRM (RNA recognition motif) domains.,
<b>Background</b>	similarity:Contains 1 C3H1-type zinc finger.,similarity:Contains 2 RRM (RNA recognition motif) domains.,
<b>matters needing attention</b>	Avoid repeated freezing and thawing!

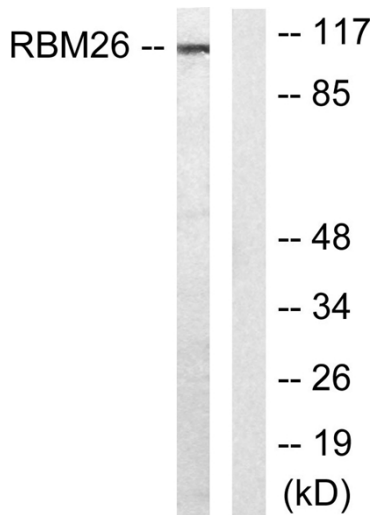
Nanjing BYabscience technology Co.,Ltd



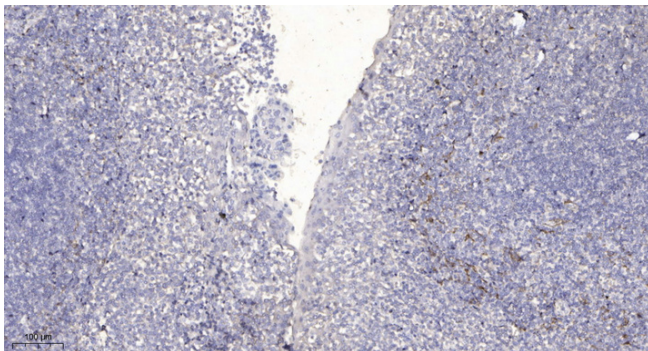
### Usage suggestions

This product can be used in immunological reaction related experiments. For more information, please consult technical personnel.

## Products Images



Western blot analysis of lysates from Jurkat cells, using RBM26 Antibody. The lane on the right is blocked with the synthesized peptide.



Immunohistochemical analysis of paraffin-embedded human tonsil. 1, Antibody was diluted at 1:200(4° overnight). 2, Tris-EDTA,pH9.0 was used for antigen retrieval. 3,Secondary antibody was diluted at 1:200(room temperature, 30min).