



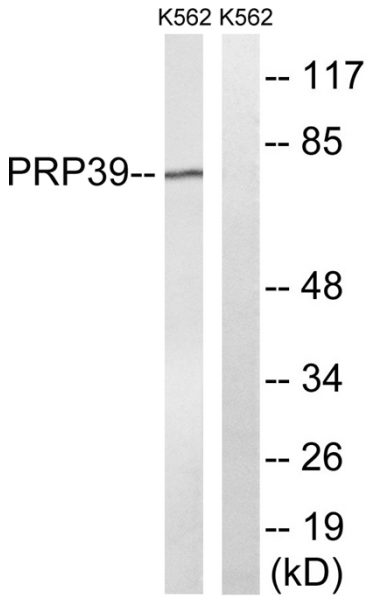
PRPF39 Polyclonal Antibody

Catalog No	BYab-01963
Isotype	IgG
Reactivity	Human;Mouse
Applications	WB;IHC;IF;ELISA
Gene Name	PRPF39
Protein Name	Pre-mRNA-processing factor 39
Immunogen	The antiserum was produced against synthesized peptide derived from human PRPF39. AA range:263-312
Specificity	PRPF39 Polyclonal Antibody detects endogenous levels of PRPF39 protein.
Formulation	Liquid in PBS containing 50% glycerol, 0.5% BSA and 0.02% sodium azide.
Source	Polyclonal, Rabbit,IgG
Purification	The antibody was affinity-purified from rabbit antiserum by affinity-chromatography using epitope-specific immunogen.
Dilution	WB: 1/500 - 1/2000. IHC: 1/100 - 1/300. ELISA: 1/40000.. IF 1:50-200
Concentration	1 mg/ml
Purity	≥90%
Storage Stability	-20°C/1 year
Synonyms	PRPF39; Pre-mRNA-processing factor 39; PRP39 homolog
Observed Band	74kD
Cell Pathway	Nucleus .
Tissue Specificity	Ileal mucosa,Liver,Placenta,Uterus,
Function	function:Involved in pre-mRNA splicing.,similarity:Belongs to the PRP39 family.,similarity:Contains 7 HAT repeats.,
Background	function:Involved in pre-mRNA splicing.,similarity:Belongs to the PRP39 family.,similarity:Contains 7 HAT repeats.,
matters needing attention	Avoid repeated freezing and thawing!
Usage suggestions	This product can be used in immunological reaction related experiments. For more information, please consult technical personnel.

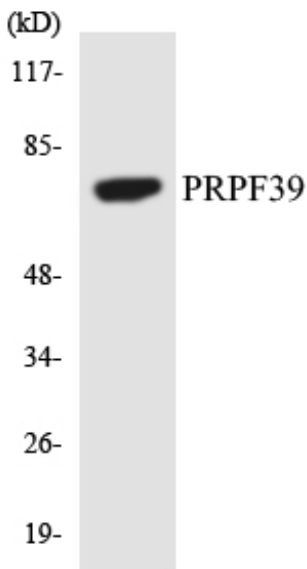
Nanjing BYabscience technology Co.,Ltd



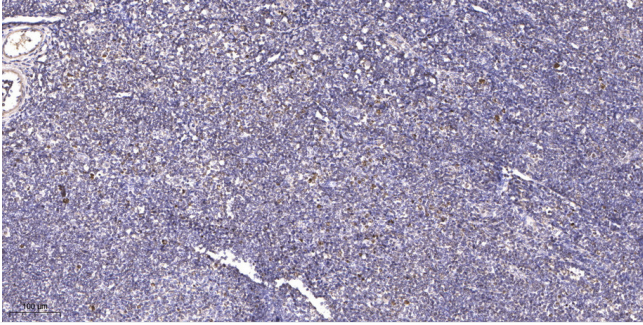
Products Images



Western blot analysis of lysates from K562 cells, using PRPF39 Antibody. The lane on the right is blocked with the synthesized peptide.



Western blot analysis of the lysates from COLO205 cells using PRPF39 antibody.



Immunohistochemical analysis of paraffin-embedded human tonsil. 1, Antibody was diluted at 1:200(4° overnight). 2, Tris-EDTA,pH9.0 was used for antigen retrieval. 3,Secondary antibody was diluted at 1:200(room temperature, 45min).