



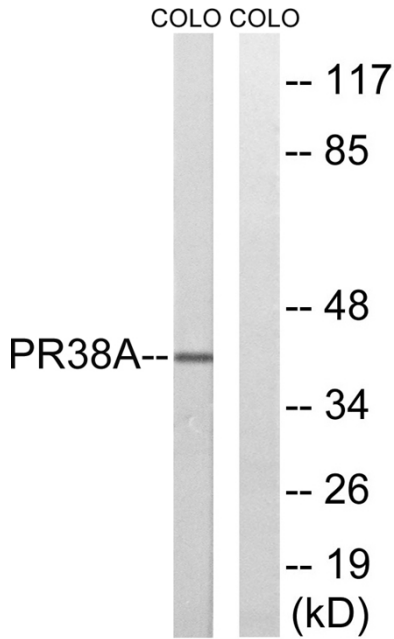
PRPF38A Polyclonal Antibody

Catalog No	BYab-01962
Isotype	IgG
Reactivity	Human;Mouse
Applications	WB;IHC;IF;ELISA
Gene Name	PRPF38A
Protein Name	Pre-mRNA-splicing factor 38A
Immunogen	The antiserum was produced against synthesized peptide derived from human PRPF38A. AA range:104-153
Specificity	PRPF38A Polyclonal Antibody detects endogenous levels of PRPF38A protein.
Formulation	Liquid in PBS containing 50% glycerol, 0.5% BSA and 0.02% sodium azide.
Source	Polyclonal, Rabbit,IgG
Purification	The antibody was affinity-purified from rabbit antiserum by affinity-chromatography using epitope-specific immunogen.
Dilution	WB: 1/500 - 1/2000. IHC: 1/100 - 1/300. ELISA: 1/20000.. IF 1:50-200
Concentration	1 mg/ml
Purity	≥90%
Storage Stability	-20°C/1 year
Synonyms	PRPF38A; Pre-mRNA-splicing factor 38A
Observed Band	40kD
Cell Pathway	Nucleus .
Tissue Specificity	Brain,Cervix,Epithelium,Placenta,
Function	function:May be required for pre-mRNA splicing .,similarity:Belongs to the PRP38 family.,
Background	function:May be required for pre-mRNA splicing .,similarity:Belongs to the PRP38 family.,
matters needing attention	Avoid repeated freezing and thawing!
Usage suggestions	This product can be used in immunological reaction related experiments. For more information, please consult technical personnel.

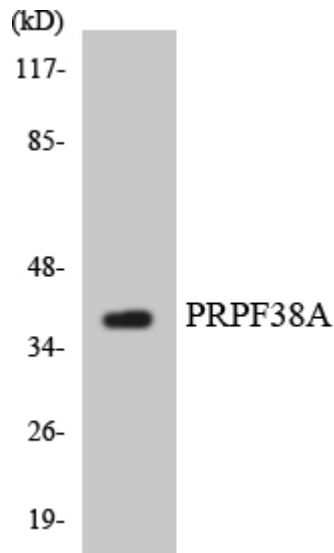
Nanjing BYabscience technology Co.,Ltd



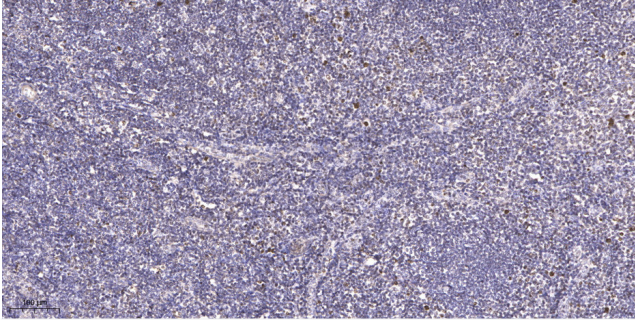
Products Images



Western blot analysis of lysates from COLO cells, using PRPF38A Antibody. The lane on the right is blocked with the synthesized peptide.



Western blot analysis of the lysates from HUVEC cells using PRPF38A antibody.



Immunohistochemical analysis of paraffin-embedded human tonsil. 1, Antibody was diluted at 1:200(4° overnight). 2, Tris-EDTA,pH9.0 was used for antigen retrieval. 3,Secondary antibody was diluted at 1:200(room temperature, 45min).