



PRPF18 Polyclonal Antibody

Catalog No	BYab-01960
Isotype	IgG
Reactivity	Human;Mouse;Rat
Applications	WB;ELISA;IHC
Gene Name	PRPF18
Protein Name	Pre-mRNA-splicing factor 18
Immunogen	The antiserum was produced against synthesized peptide derived from human PRPF18. AA range:182-231
Specificity	PRPF18 Polyclonal Antibody detects endogenous levels of PRPF18 protein.
Formulation	Liquid in PBS containing 50% glycerol, 0.5% BSA and 0.02% sodium azide.
Source	Polyclonal, Rabbit,IgG
Purification	The antibody was affinity-purified from rabbit antiserum by affinity-chromatography using epitope-specific immunogen.
Dilution	WB 1:500-2000;IHC-p 1:50-300; ELISA 2000-20000
Concentration	1 mg/ml
Purity	≥90%
Storage Stability	-20°C/1 year
Synonyms	PRPF18; HPRP18; Pre-mRNA-splicing factor 18; PRP18 homolog; hPRP18
Observed Band	40kD
Cell Pathway	Nucleus speckle . Colocalizes with spliceosomal snRNPs. .
Tissue Specificity	Brain,Cervix carcinoma,Placenta,
Function	function:Participates in the second step of pre-mRNA splicing.,similarity:Belongs to the PRP18 family.,subcellular location:Colocalizes with spliceosomal snRNPs.,subunit:Heterodimer with PPIH. Interacts with PRPF4 and with the spliceosome. Part of a complex containing U4/U6 snRNPs.,
Background	Pre-mRNA splicing occurs in 2 sequential transesterification steps. The protein encoded by this gene is found to be essential for the catalytic step II in pre-mRNA splicing process. It is found in the spliceosome, and contains seven WD repeats, which function in protein-protein interactions. This protein has a sequence similarity to the yeast splicing factor Prp18. [provided by RefSeq, Jul 2008],

Nanjing BYabscience technology Co.,Ltd



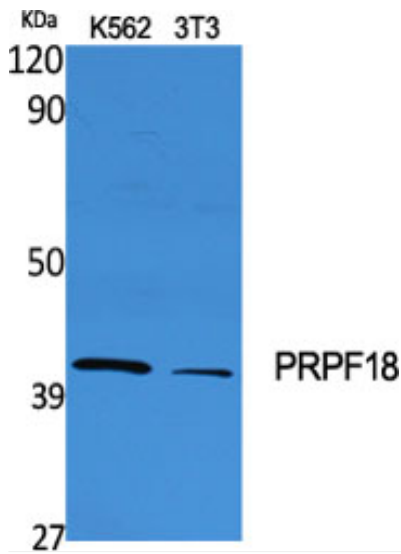
matters needing attention

Avoid repeated freezing and thawing!

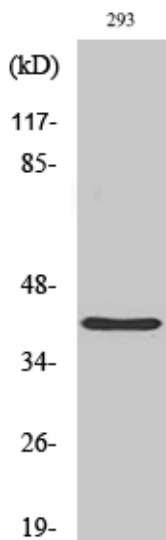
Usage suggestions

This product can be used in immunological reaction related experiments. For more information, please consult technical personnel.

Products Images

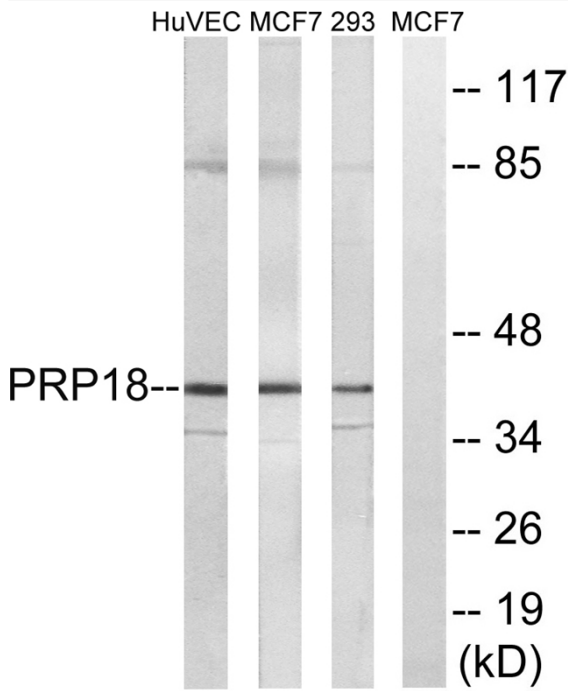


Western Blot analysis of various cells using PRPF18 Polyclonal Antibody diluted at 1:500 cells nucleus extracted by Minute TM Cytoplasmic and Nuclear Fractionation kit (SC-003, Inventbiotech, MN, USA).

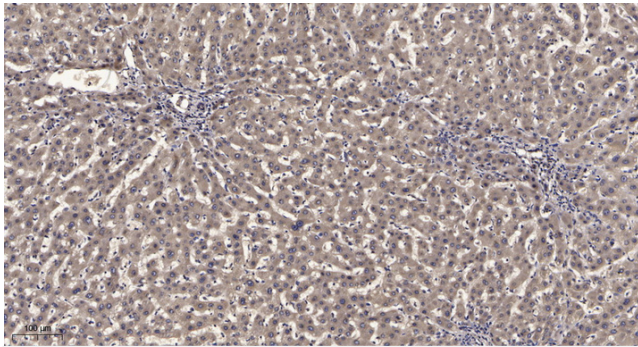


Western Blot analysis of HuvEc cells using PRPF18 Polyclonal Antibody diluted at 1:500 cells nucleus extracted by Minute TM Cytoplasmic and Nuclear Fractionation kit (SC-003, Inventbiotech, MN, USA).

Nanjing BYabscience technology Co.,Ltd



Western blot analysis of lysates from 293, MCF-7, and HUVEC cells, using PRPF18 Antibody. The lane on the right is blocked with the synthesized peptide.



Immunohistochemical analysis of paraffin-embedded human liver cancer. 1, Antibody was diluted at 1:200(4° overnight). 2, Tris-EDTA,pH9.0 was used for antigen retrieval. 3,Secondary antibody was diluted at 1:200(room temperature, 45min).