



# PRIM1 Polyclonal Antibody

|                           |  |
|---------------------------|--|
| <b>Catalog No</b>         | BYab-01958   |
| <b>Isotype</b>            | IgG  |
| <b>Reactivity</b>         | Human;Mouse;Rat  |
| <b>Applications</b>       | WB;IHC;IF;ELISA  |
| <b>Gene Name</b>          | PRIM1  |
| <b>Protein Name</b>       | DNA primase small subunit  |
| <b>Immunogen</b>          | The antiserum was produced against synthesized peptide derived from human PRIM1. AA range:371-420  |
| <b>Specificity</b>        | PRIM1 Polyclonal Antibody detects endogenous levels of PRIM1 protein.  |
| <b>Formulation</b>        | Liquid in PBS containing 50% glycerol, 0.5% BSA and 0.02% sodium azide.  |
| <b>Source</b>             | Polyclonal, Rabbit,IgG   |
| <b>Purification</b>       | The antibody was affinity-purified from rabbit antiserum by affinity-chromatography using epitope-specific immunogen.  |
| <b>Dilution</b>           | WB: 1/500 - 1/2000. IHC: 1/100 - 1/300. ELISA: 1/10000.. IF 1:50-200   |
| <b>Concentration</b>      | 1 mg/ml  |
| <b>Purity</b>             | ≥90%   |
| <b>Storage Stability</b>  | -20°C/1 year   |
| <b>Synonyms</b>           | PRIM1; DNA primase small subunit; DNA primase 49 kDa subunit; p49  |
| <b>Observed Band</b>      | 50kD   |
| <b>Cell Pathway</b>       | nucleoplasm,alpha DNA polymerase:primase complex,membrane,primosome complex,   |
| <b>Tissue Specificity</b> | Bone marrow,Thymus,  |
| <b>Function</b>           | function:DNA primase is the polymerase that synthesizes small RNA primers for the Okazaki fragments made during discontinuous DNA replication.,miscellaneous:The bound zinc ion is not a cofactor. It is bound to a zinc knuckle motif that may be involved in sequence recognition and the binding of ssDNA.,similarity:Belongs to the eukaryotic-type primase small subunit family.,subunit:Heterodimer of a small subunit and a large subunit., |
| <b>Background</b>         | The replication of DNA in eukaryotic cells is carried out by a complex chromosomal replication apparatus, in which DNA polymerase alpha and primase are two key enzymatic components. Primase, which is a heterodimer of a small subunit and a large subunit, synthesizes small RNA primers for the Okazaki  |

Nanjing BYabscience technology Co.,Ltd



fragments made during discontinuous DNA replication. The protein encoded by this gene is the small, 49 kDa primase subunit. [provided by RefSeq, Jul 2008],

**matters needing attention**

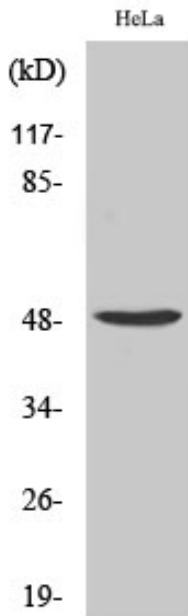
Avoid repeated freezing and thawing!

**Usage suggestions**

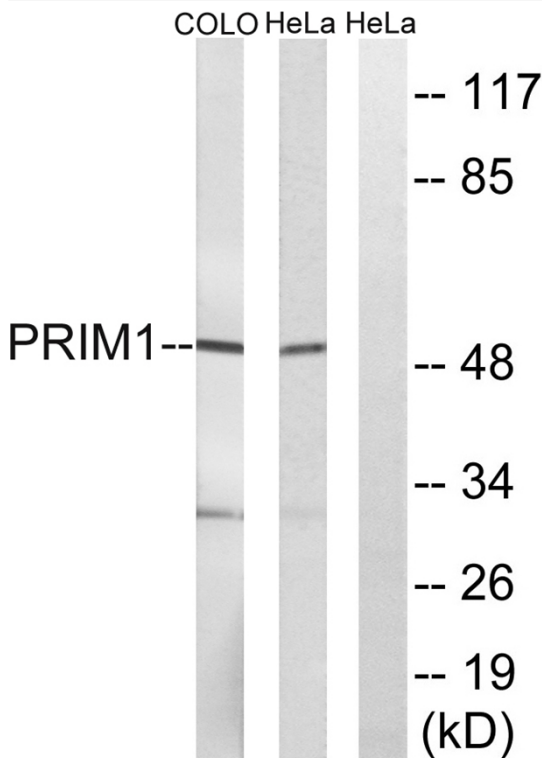
This product can be used in immunological reaction related experiments. For more information, please consult technical personnel.



## Products Images

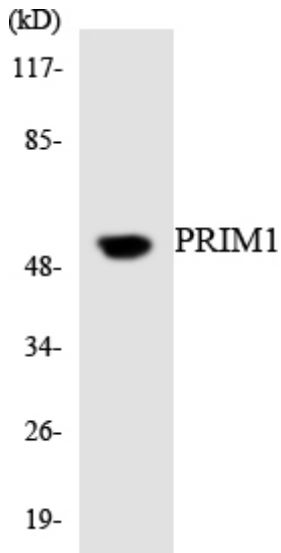


Western Blot analysis of various cells using PRIM1 Polyclonal Antibody cells nucleus extracted by Minute TM Cytoplasmic and Nuclear Fractionation kit (SC-003, Inventbiotech, MN, USA).

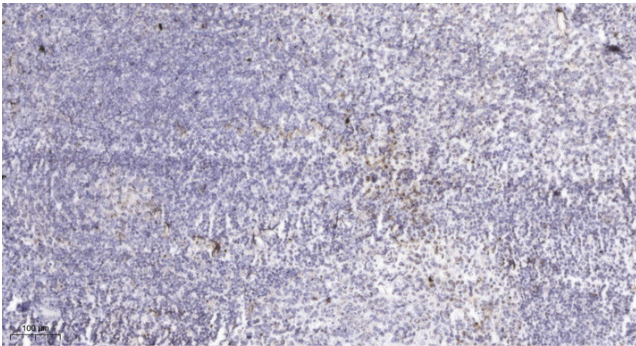


Western blot analysis of lysates from COLO and HeLa cells, using PRIM1 Antibody. The lane on the right is blocked with the synthesized peptide.

Nanjing BYabscience technology Co.,Ltd



Western blot analysis of the lysates from K562 cells using PRIM1 antibody.



Immunohistochemical analysis of paraffin-embedded human tonsil. 1, Antibody was diluted at 1:200(4° overnight). 2, Tris-EDTA,pH9.0 was used for antigen retrieval. 3,Secondary antibody was diluted at 1:200(room temperature, 45min).