



PRDM12 Polyclonal Antibody

Catalog No	BYab-01955
Isotype	IgG
Reactivity	Human;Mouse
Applications	IF;ELISA;IHC
Gene Name	PRDM12
Protein Name	PR domain zinc finger protein 12
Immunogen	The antiserum was produced against synthesized peptide derived from human PRDM12. AA range:191-240
Specificity	PRDM12 Polyclonal Antibody detects endogenous levels of PRDM12 protein.
Formulation	Liquid in PBS containing 50% glycerol, 0.5% BSA and 0.02% sodium azide.
Source	Polyclonal, Rabbit,IgG
Purification	The antibody was affinity-purified from rabbit antiserum by affinity-chromatography using epitope-specific immunogen.
Dilution	IF/ICC 1:50-300; ELISA 1:2000-20000; IHC-p 1:50-200
Concentration	1 mg/ml
Purity	≥90%
Storage Stability	-20°C/1 year
Synonyms	PRDM12; PFM9; PR domain zinc finger protein 12; PR domain-containing protein 12
Observed Band	40kD
Cell Pathway	Nucleus .
Tissue Specificity	Not found in adult tissues except in dorsal root ganglia.
Function	function:May be involved in transcriptional regulation.,similarity:Contains 1 SET domain.,similarity:Contains 3 C2H2-type zinc fingers.,
Background	function:May be involved in transcriptional regulation.,similarity:Contains 1 SET domain.,similarity:Contains 3 C2H2-type zinc fingers.,
matters needing attention	Avoid repeated freezing and thawing!

Nanjing BYabscience technology Co.,Ltd

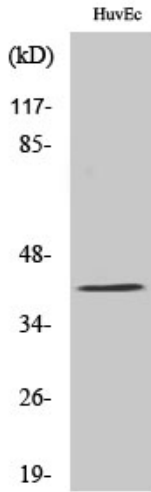


Usage suggestions

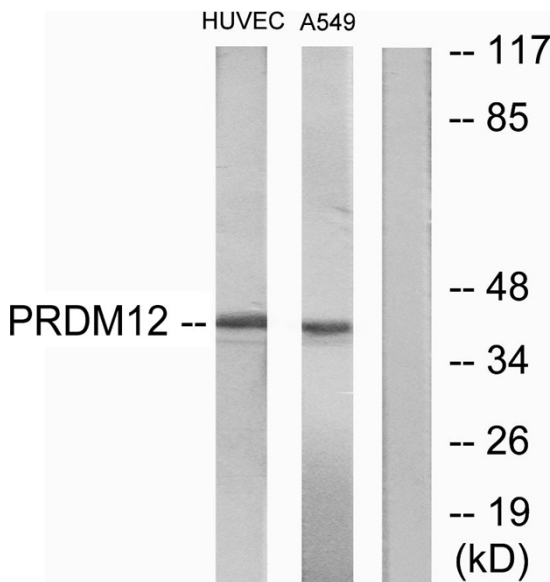
This product can be used in immunological reaction related experiments. For more information, please consult technical personnel.



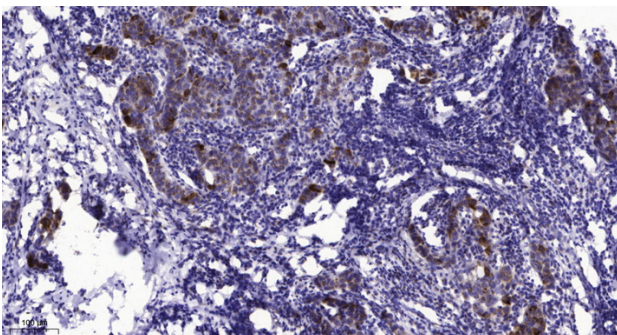
Products Images



Western Blot analysis of various cells using PRDM12 Polyclonal Antibody cells nucleus extracted by Minute TM Cytoplasmic and Nuclear Fractionation kit (SC-003, Inventbiotech, MN, USA).



Western blot analysis of lysates from HUVEC and A549 cells, using PRDM12 Antibody. The lane on the right is blocked with the synthesized peptide.



Immunohistochemical analysis of paraffin-embedded human Breast cancer. 1, Antibody was diluted at 1:200(4° overnight). 2, Tris-EDTA, pH9.0 was used for antigen retrieval. 3, Secondary antibody was diluted at 1:200(room temperature, 45min).