



Ovol1 Polyclonal Antibody

Catalog No	BYab-01931
Isotype	IgG
Reactivity	Human;Mouse
Applications	WB;IHC;IF;ELISA
Gene Name	OVOL1
Protein Name	Putative transcription factor Ovo-like 1
Immunogen	The antiserum was produced against synthesized peptide derived from human OVOL1. AA range:1-50
Specificity	Ovol1 Polyclonal Antibody detects endogenous levels of Ovol1 protein.
Formulation	Liquid in PBS containing 50% glycerol, 0.5% BSA and 0.02% sodium azide.
Source	Polyclonal, Rabbit,IgG
Purification	The antibody was affinity-purified from rabbit antiserum by affinity-chromatography using epitope-specific immunogen.
Dilution	WB: 1/500 - 1/2000. IHC: 1/100 - 1/300. ELISA: 1/40000.. IF 1:50-200
Concentration	1 mg/ml
Purity	≥90%
Storage Stability	-20°C/1 year
Synonyms	OVOL1; Putative transcription factor Ovo-like 1; hOvo1
Observed Band	33kD
Cell Pathway	Nucleus .
Tissue Specificity	Expressed in fetal kidney, and also in adult pancreas and placenta. Not expressed in intestine, peripheral blood lymphocytes and ovary.
Function	function:Putative transcription factor. Involved in hair formation and spermatogenesis. May function in the differentiation and/or maintenance of the urogenital system.,similarity:Contains 4 C2H2-type zinc fingers.,tissue specificity:Expressed in fetal kidney, and also in adult pancreas and placenta. Not expressed in intestine, peripheral blood lymphocytes and ovary.,
Background	This gene encodes a putative zinc finger containing transcription factor that is highly similar to homologous protein in Drosophila and mouse. Based on known functions in these species, this protein is likely involved in hair formation and spermatogenesis in human as well. [provided by RefSeq, Aug 2011],

Nanjing BYabscience technology Co.,Ltd



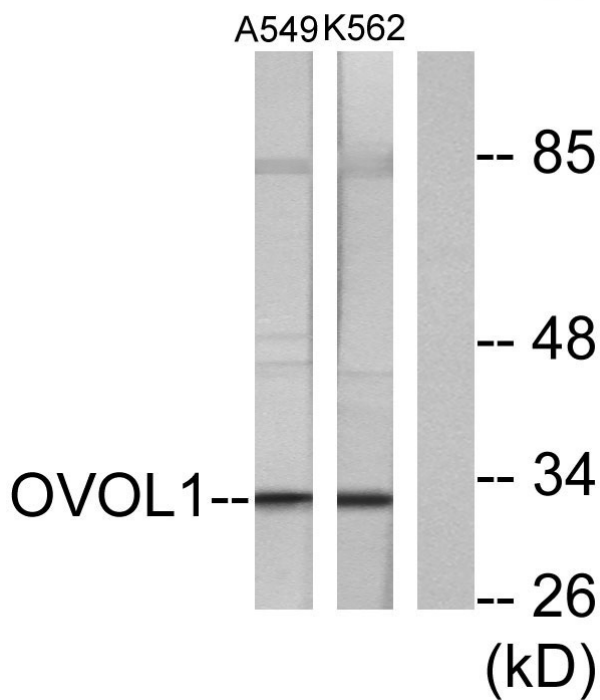
matters needing attention

Avoid repeated freezing and thawing!

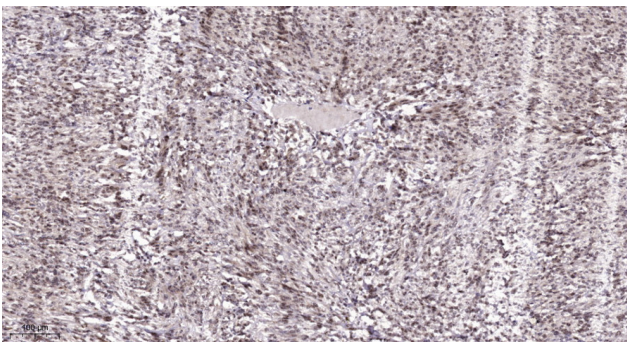
Usage suggestions

This product can be used in immunological reaction related experiments. For more information, please consult technical personnel.

Products Images



Western blot analysis of lysates from K562 and A549 cells, using OVOL1 Antibody. The lane on the right is blocked with the synthesized peptide.



Immunohistochemical analysis of paraffin-embedded human Colon cancer. 1, Antibody was diluted at 1:200(4° overnight). 2, Tris-EDTA,pH9.0 was used for antigen retrieval. 3,Secondary antibody was diluted at 1:200(room temperature, 45min).

Nanjing BYabscience technology Co.,Ltd