



# NUCKS Polyclonal Antibody

<b>Catalog No</b>	BYab-01922
<b>Isotype</b>	IgG
<b>Reactivity</b>	Human;Mouse;Rat
<b>Applications</b>	IHC;IF;ELISA
<b>Gene Name</b>	NUCKS1
<b>Protein Name</b>	Nuclear ubiquitous casein and cyclin-dependent kinase substrate 1
<b>Immunogen</b>	The antiserum was produced against synthesized peptide derived from human NUCKS1. AA range:28-77
<b>Specificity</b>	NUCKS Polyclonal Antibody detects endogenous levels of NUCKS protein.
<b>Formulation</b>	Liquid in PBS containing 50% glycerol, 0.5% BSA and 0.02% sodium azide.
<b>Source</b>	Polyclonal, Rabbit,IgG
<b>Purification</b>	The antibody was affinity-purified from rabbit antiserum by affinity-chromatography using epitope-specific immunogen.
<b>Dilution</b>	IHC: 1/100 - 1/300. ELISA: 1/10000.. IF 1:50-200
<b>Concentration</b>	1 mg/ml
<b>Purity</b>	≥90%
<b>Storage Stability</b>	-20°C/1 year
<b>Synonyms</b>	NUCKS1; NUCKS; JC7; Nuclear ubiquitous casein and cyclin-dependent kinase substrate 1; P1
<b>Observed Band</b>	
<b>Cell Pathway</b>	Nucleus . Chromosome .
<b>Tissue Specificity</b>	Widely expressed, with highest levels in thyroid gland, prostate and uterus and in fetal liver, thymus and lung.
<b>Function</b>	PTM:Phosphorylated by CDK1 and casein kinase. Phosphorylated upon DNA damage, probably by ATM or ATR.,sequence caution:Translated as Arg.,
<b>Background</b>	This gene encodes a nuclear protein that is highly conserved in vertebrates. The conserved regions of the protein contain several consensus phosphorylation sites for casein kinase II and cyclin-dependent kinases, two putative nuclear localization signals, and a basic DNA-binding domain. It is phosphorylated in vivo by Cdk1 during mitosis of the cell cycle. [provided by RefSeq, Aug 2010],

Nanjing BYabscience technology Co.,Ltd



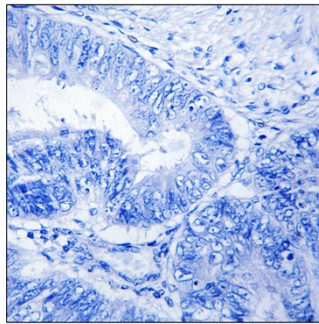
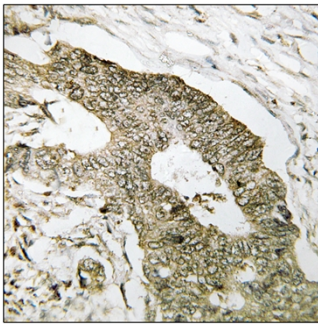
**matters needing attention**

Avoid repeated freezing and thawing!

**Usage suggestions**

This product can be used in immunological reaction related experiments. For more information, please consult technical personnel.

## Products Images



Immunohistochemistry analysis of paraffin-embedded human colon carcinoma tissue, using NUCKS1 Antibody. The picture on the right is blocked with the synthesized peptide.