



NTPase Polyclonal Antibody

Catalog No	BYab-01921
Isotype	IgG
Reactivity	Human;Rat;Mouse;
Applications	WB;IHC;IF;ELISA
Gene Name	NTPCR
Protein Name	Cancer-related nucleoside-triphosphatase
Immunogen	The antiserum was produced against synthesized peptide derived from human C1orf57. AA range:141-190
Specificity	NTPase Polyclonal Antibody detects endogenous levels of NTPase protein.
Formulation	Liquid in PBS containing 50% glycerol, 0.5% BSA and 0.02% sodium azide.
Source	Polyclonal, Rabbit,IgG
Purification	The antibody was affinity-purified from rabbit antiserum by affinity-chromatography using epitope-specific immunogen.
Dilution	WB: 1/500 - 1/2000. IHC: 1/100 - 1/300. ELISA: 1/40000.. IF 1:50-200
Concentration	1 mg/ml
Purity	≥90%
Storage Stability	-20°C/1 year
Synonyms	NTPCR; C1orf57; Cancer-related nucleoside-triphosphatase; NTPase; Nucleoside triphosphate phosphohydrolase
Observed Band	21kD
Cell Pathway	membrane,extracellular exosome,
Tissue Specificity	Fetal brain,Skin,
Function	catalytic activity:NTP + H(2)O = NDP + phosphate.,function:Has nucleotide phosphatase activity towards ATP, GTP, CTP, TTP and UTP. Hydrolyzes nucleoside diphosphates with lower efficiency.,similarity:Belongs to the THEP1 NTPase family.,subunit:Monomer.,
Background	The protein encoded by this gene is a non-specific nucleoside triphosphatase that is slow-acting in vitro. This gene is overexpressed in many tumor tissues, and while it is not essential for the cell, overexpression is cytotoxic. However, the cytotoxicity is not related to its triphosphatase activity. [provided by RefSeq, Jul 2016],

Nanjing BYabscience technology Co.,Ltd



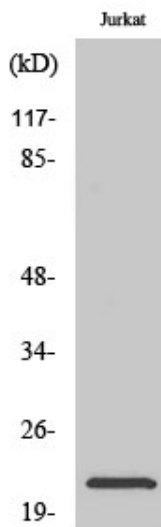
matters needing attention

Avoid repeated freezing and thawing!

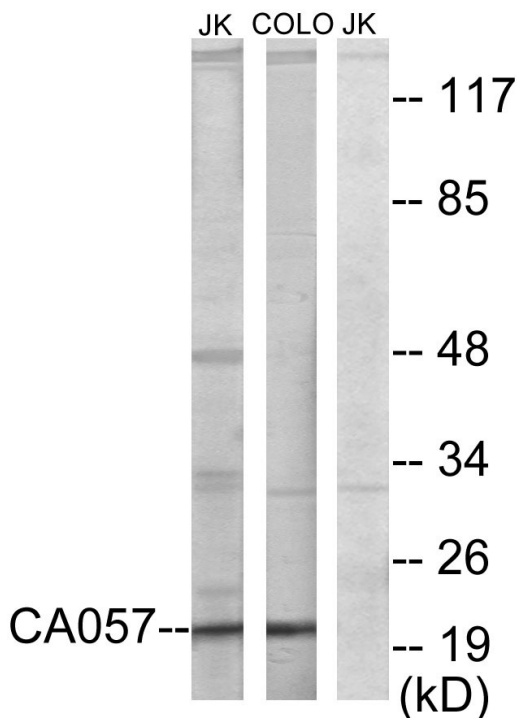
Usage suggestions

This product can be used in immunological reaction related experiments. For more information, please consult technical personnel.

Products Images

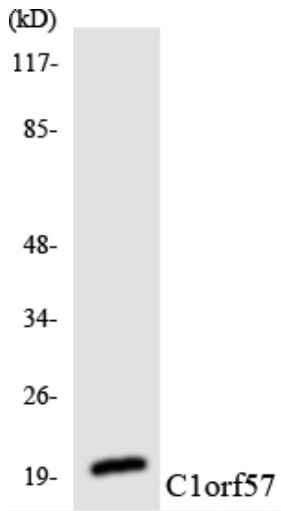


Western Blot analysis of various cells using NTPase Polyclonal Antibody



Western blot analysis of lysates from Jurkat and COLO205 cells, using C1orf57 Antibody. The lane on the right is blocked with the synthesized peptide.

Nanjing BYabscience technology Co.,Ltd



Western blot analysis of the lysates from HUVECcells using C1orf57 antibody.