



# Nrf3 Polyclonal Antibody

<b>Catalog No</b>	BYab-01917
<b>Isotype</b>	IgG
<b>Reactivity</b>	Human;Rat;Mouse;
<b>Applications</b>	WB;ELISA
<b>Gene Name</b>	NFE2L3
<b>Protein Name</b>	Nuclear factor erythroid 2-related factor 3
<b>Immunogen</b>	The antiserum was produced against synthesized peptide derived from human NFE2L3. AA range:491-540
<b>Specificity</b>	Nrf3 Polyclonal Antibody detects endogenous levels of Nrf3 protein.
<b>Formulation</b>	Liquid in PBS containing 50% glycerol, 0.5% BSA and 0.02% sodium azide.
<b>Source</b>	Polyclonal, Rabbit,IgG
<b>Purification</b>	The antibody was affinity-purified from rabbit antiserum by affinity-chromatography using epitope-specific immunogen.
<b>Dilution</b>	Western Blot: 1/500 - 1/2000. ELISA: 1/10000. Not yet tested in other applications.
<b>Concentration</b>	1 mg/ml
<b>Purity</b>	≥90%
<b>Storage Stability</b>	-20°C/1 year
<b>Synonyms</b>	NFE2L3; NRF3; Nuclear factor erythroid 2-related factor 3; NF-E2-related factor 3; NFE2-related factor 3; Nuclear factor; erythroid derived 2, like 3
<b>Observed Band</b>	75kD
<b>Cell Pathway</b>	Nucleus .
<b>Tissue Specificity</b>	Highly expressed in human placenta and also in B-cell and monocyte cell lines. Low expression in heart, brain, lung, skeletal muscle, kidney and pancreas.
<b>Function</b>	function:Activates erythroid-specific, globin gene expression.,similarity:Belongs to the bZIP family.,similarity:Belongs to the bZIP family. CNC subfamily.,similarity:Contains 1 bZIP domain.,subunit:Heterodimer with MAFG, MAFK and other small MAF proteins that binds to the MAF recognition elements (MARE).,tissue specificity:Highly expressed in human placenta and also in B-cell and monocyte cell lines. Low expression in heart, brain, lung, skeletal muscle, kidney and pancreas.,
<b>Background</b>	This gene encodes a member of the cap & nbsp; collar basic-region leucine zipper family of transcription factors. The encoded protein heterodimerizes

Nanjing BYabscience technology Co.,Ltd



with small musculoaponeurotic fibrosarcoma factors to bind antioxidant response elements in target genes. This protein is a membrane bound glycoprotein that is targeted to the endoplasmic reticulum and the nuclear envelope. Pseudogenes of this gene are found on chromosomes 16, 17, and 18. [provided by RefSeq, Mar 2009],

**matters needing attention**

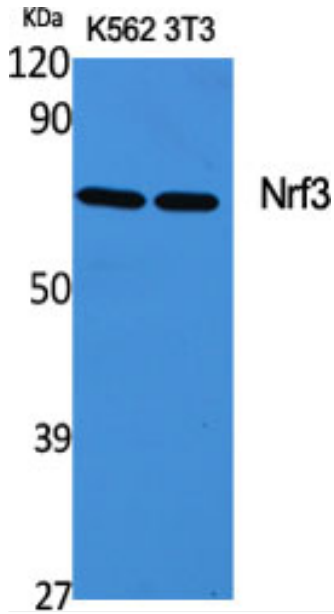
Avoid repeated freezing and thawing!

**Usage suggestions**

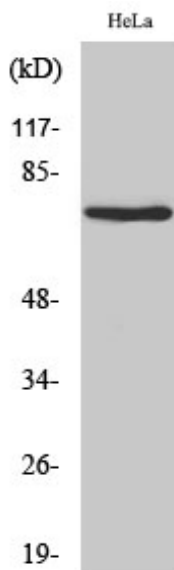
This product can be used in immunological reaction related experiments. For more information, please consult technical personnel.



## Products Images



Western Blot analysis of various cells using Nrf3 Polyclonal Antibody cells nucleus extracted by Minute<sup>TM</sup> Cytoplasmic and Nuclear Fractionation kit (SC-003, Inventbiotech, MN, USA).



Western Blot analysis of HeLa cells using Nrf3 Polyclonal Antibody cells nucleus extracted by Minute<sup>TM</sup> Cytoplasmic and Nuclear Fractionation kit (SC-003, Inventbiotech, MN, USA).