



NFRκB Polyclonal Antibody

Catalog No	BYab-01900
Isotype	IgG
Reactivity	Human;Mouse;Monkey
Applications	WB; ELISA;IHC
Gene Name	NFRKB
Protein Name	Nuclear factor related to kappa-B-binding protein
Immunogen	The antiserum was produced against synthesized peptide derived from human NFRKB. AA range:463-512
Specificity	NFRκB Polyclonal Antibody detects endogenous levels of NFRκB protein.
Formulation	Liquid in PBS containing 50% glycerol, 0.5% BSA and 0.02% sodium azide.
Source	Polyclonal, Rabbit,IgG
Purification	The antibody was affinity-purified from rabbit antiserum by affinity-chromatography using epitope-specific immunogen.
Dilution	WB 1:500-2000;IHC-p 1:50-300; ELISA 2000-20000
Concentration	1 mg/ml
Purity	≥90%
Storage Stability	-20°C/1 year
Synonyms	NFRKB; INO80G; Nuclear factor related to kappa-B-binding protein; DNA-binding protein R kappa-B; INO80 complex subunit G
Observed Band	110kD
Cell Pathway	Nucleus .
Tissue Specificity	Expressed in thymus, brain, testes, spleen and liver.
Function	function:Binds to the DNA consensus sequence 5'-GGGGAATCTCC-3'.PTM:Phosphorylated upon DNA damage, probably by ATM or ATR.,subunit:Component of the chromatin-remodeling INO80 complex, at least composed of ACTL6A, ACTR5, ACTR8, RVBL1, RVBL2, INO80, INO80B, INO80C, INO80D and INO80E.,tissue specificity:Expressed in thymus, brain, testes, spleen and liver.,
Background	function:Binds to the DNA consensus sequence 5'-GGGGAATCTCC-3'.PTM:Phosphorylated upon DNA damage, probably by ATM or ATR.,subunit:Component of the chromatin-remodeling INO80 complex, at least composed of ACTL6A, ACTR5, ACTR8, RVBL1, RVBL2, INO80, INO80B,

Nanjing BYabscience technology Co.,Ltd



INO80C, INO80D and INO80E.,tissue specificity:Expressed in thymus, brain, testes, spleen and liver.,

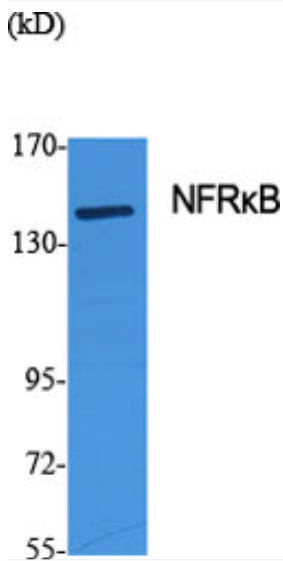
matters needing attention

Avoid repeated freezing and thawing!

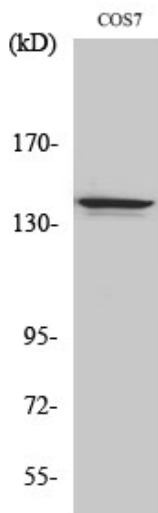
Usage suggestions

This product can be used in immunological reaction related experiments. For more information, please consult technical personnel.

Products Images

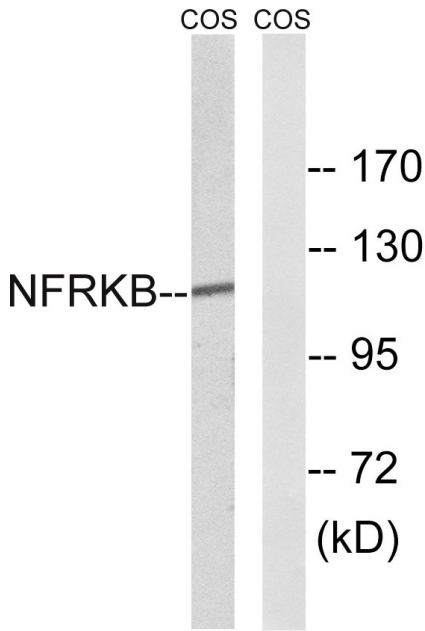


Western Blot analysis of various cells using NFRkB Polyclonal Antibody diluted at 1:500 cells nucleus extracted by Minute TM Cytoplasmic and Nuclear Fractionation kit (SC-003, Inventbiotech, MN, USA).

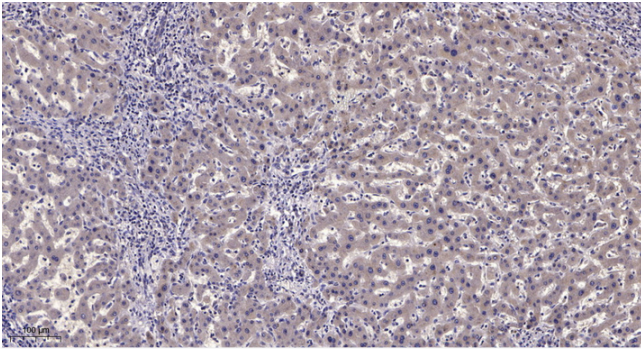


Western Blot analysis of COS7 cells using NFRkB Polyclonal Antibody diluted at 1:500 cells nucleus extracted by Minute TM Cytoplasmic and Nuclear Fractionation kit (SC-003, Inventbiotech, MN, USA).

Nanjing BYabscience technology Co.,Ltd



Western blot analysis of lysates from COS7 cells, using NFRKB Antibody. The lane on the right is blocked with the synthesized peptide.



Immunohistochemical analysis of paraffin-embedded human liver cancer. 1, Antibody was diluted at 1:200(4° overnight). 2, Tris-EDTA,pH9.0 was used for antigen retrieval. 3,Secondary antibody was diluted at 1:200(room temperature, 45min).