



# NFATc2IP Polyclonal Antibody

<b>Catalog No</b>	BYab-01897
<b>Isotype</b>	IgG
<b>Reactivity</b>	Human;Rat;Mouse;;Fish
<b>Applications</b>	WB;IHC
<b>Gene Name</b>	NFATC2IP
<b>Protein Name</b>	NFATC2-interacting protein
<b>Immunogen</b>	The antiserum was produced against synthesized peptide derived from human NFATC2IP. AA range:151-200
<b>Specificity</b>	NFATc2IP Polyclonal Antibody detects endogenous levels of NFATc2IP protein.
<b>Formulation</b>	Liquid in PBS containing 50% glycerol, 0.5% BSA and 0.02% sodium azide.
<b>Source</b>	Polyclonal, Rabbit,IgG
<b>Purification</b>	The antibody was affinity-purified from rabbit antiserum by affinity-chromatography using epitope-specific immunogen.
<b>Dilution</b>	WB 1:500-2000;IHC-p 1:50-300
<b>Concentration</b>	1 mg/ml
<b>Purity</b>	≥90%
<b>Storage Stability</b>	-20°C/1 year
<b>Synonyms</b>	NFATC2IP; NIP45; NFATC2-interacting protein; 45 kDa NF-AT-interacting protein; 45 kDa NFAT-interacting protein; Nuclear factor of activated T-cells; cytoplasmic 2-interacting protein
<b>Observed Band</b>	48kD
<b>Cell Pathway</b>	Nucleus . Cytoplasm . TRAF1 is associated with a fraction of NFATC2IP in the cytoplasm and prevents its translocation to the nucleus. .
<b>Tissue Specificity</b>	Brain,Epithelium,Eye,Liver,
<b>Function</b>	function:Plays a role in the inducible expression of cytokine genes in T-cells, especially by increasing NFAT-driven IL-4 production.,PTM:Methylation at the N-terminus by PRMT1 modulates interaction with the NFAT complex and results in augmented cytokine production.,similarity:Contains 1 ubiquitin-like domain.,subcellular location:TRAF1 is associated with a fraction of NFATC2IP in the cytoplasm and prevents its translocation to the nucleus.,subunit:Interacts with NFATC2, TRAF1, TRAF2 and PRMT1.,

Nanjing BYabscience technology Co.,Ltd



**Background**

function:Plays a role in the inducible expression of cytokine genes in T-cells, especially by increasing NFAT-driven IL-4 production.,PTM:Methylation at the N-terminus by PRMT1 modulates interaction with the NFAT complex and results in augmented cytokine production.,similarity:Contains 1 ubiquitin-like domain.,subcellular location:TRAF1 is associated with a fraction of NFATC2IP in the cytoplasm and prevents its translocation to the nucleus.,subunit:Interacts with NFATC2, TRAF1, TRAF2 and PRMT1.,

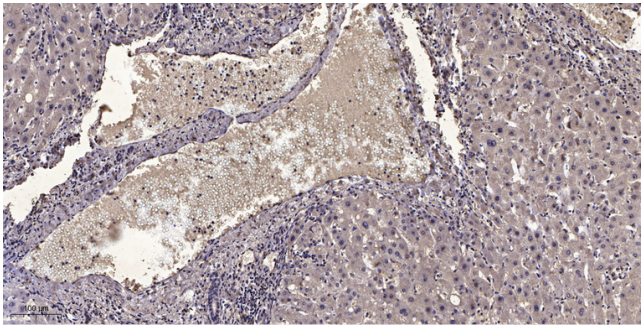
**matters needing attention**

Avoid repeated freezing and thawing!

**Usage suggestions**

This product can be used in immunological reaction related experiments. For more information, please consult technical personnel.

**Products Images**



Immunohistochemical analysis of paraffin-embedded human liver cancer. 1, Antibody was diluted at 1:200(4° overnight). 2, Tris-EDTA,pH9.0 was used for antigen retrieval. 3,Secondary antibody was diluted at 1:200(room temperature, 45min).