



Musculin Polyclonal Antibody

Catalog No	BYab-01884
Isotype	IgG
Reactivity	Human;Mouse
Applications	WB;IHC;IF;ELISA
Gene Name	MSC
Protein Name	Musculin
Immunogen	The antiserum was produced against synthesized peptide derived from human Musculin. AA range:131-180
Specificity	Musculin Polyclonal Antibody detects endogenous levels of Musculin protein.
Formulation	Liquid in PBS containing 50% glycerol, 0.5% BSA and 0.02% sodium azide.
Source	Polyclonal, Rabbit,IgG
Purification	The antibody was affinity-purified from rabbit antiserum by affinity-chromatography using epitope-specific immunogen.
Dilution	WB: 1/500 - 1/2000. IHC: 1/100 - 1/300. ELISA: 1/10000.. IF 1:50-200
Concentration	1 mg/ml
Purity	≥90%
Storage Stability	-20°C/1 year
Synonyms	MSC; ABF1; BHLHA22; Musculin; Activated B-cell factor 1; ABF-1; Class A basic helix-loop-helix protein 22; bHLHa22
Observed Band	22kD
Cell Pathway	Nucleus.
Tissue Specificity	Expressed in lymphoid tissues, B-cell lines and activated B-cells.
Function	function:Transcription repressor capable of inhibiting the transactivation capability of TCF3/E47. May play a role in regulating antigen-dependent B-cell differentiation.,similarity:Contains 1 basic helix-loop-helix (bHLH) domain.,subunit:Efficient DNA binding requires dimerization with another bHLH protein. Binds DNA as a homodimer or a heterodimer. Forms a heterodimer with TCF3.,tissue specificity:Expressed in lymphoid tissues, B-cell lines and activated B-cells.,
Background	The protein encoded by this gene is a transcriptional repressor capable of binding an E-box element either as a homodimer or as a heterodimer with E2A in vitro. The encoded protein also forms heterodimers with E2A proteins in vivo. This

Nanjing BYabscience technology Co.,Ltd



protein is capable of inhibiting the transactivation capability of E47, an E2A protein, in mammalian cells. This gene is a downstream target of the B-cell receptor signal transduction pathway. [provided by RefSeq, Jul 2008],

matters needing attention

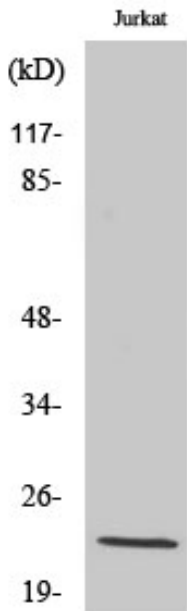
Avoid repeated freezing and thawing!

Usage suggestions

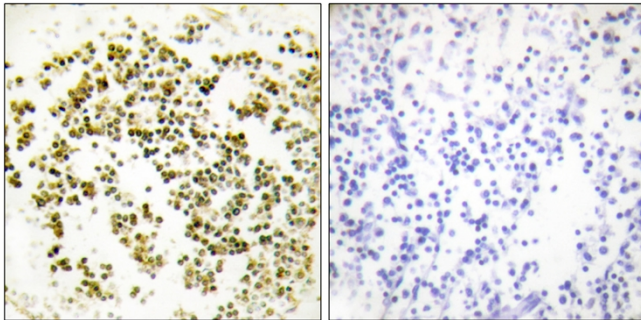
This product can be used in immunological reaction related experiments. For more information, please consult technical personnel.



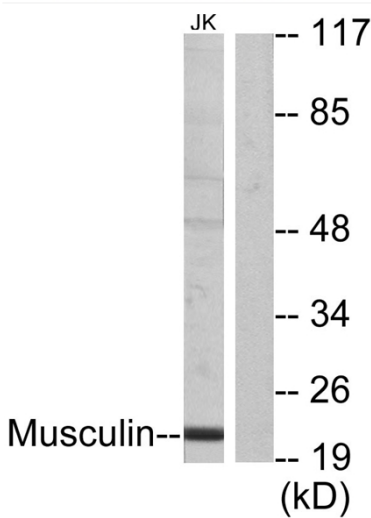
Products Images



Western Blot analysis of various cells using Musculin Polyclonal Antibody diluted at 1:2000 cells nucleus extracted by Minute TM Cytoplasmic and Nuclear Fractionation kit (SC-003, Inventbiotech, MN, USA).



Immunohistochemistry analysis of paraffin-embedded human lymph node tissue, using Musculin Antibody. The picture on the right is blocked with the synthesized peptide.



Western blot analysis of lysates from Jurkat cells, using Musculin Antibody. The lane on the right is blocked with the synthesized peptide.

Nanjing BYabscience technology Co.,Ltd