



Sin3B Polyclonal Antibody

Catalog No	BYab-01879
Isotype	IgG
Reactivity	Human;Rat;Mouse;
Applications	WB;ELISA;IHC
Gene Name	SIN3B
Protein Name	Paired amphipathic helix protein Sin3b
Immunogen	The antiserum was produced against synthesized peptide derived from human SIN3B. AA range:221-270
Specificity	Sin3B Polyclonal Antibody detects endogenous levels of Sin3B protein.
Formulation	Liquid in PBS containing 50% glycerol, 0.5% BSA and 0.02% sodium azide.
Source	Polyclonal, Rabbit,IgG
Purification	The antibody was affinity-purified from rabbit antiserum by affinity-chromatography using epitope-specific immunogen.
Dilution	WB 1:500-2000;IHC-p 1:50-300; ELISA 2000-20000
Concentration	1 mg/ml
Purity	≥90%
Storage Stability	-20°C/1 year
Synonyms	SIN3B; KIAA0700; Paired amphipathic helix protein Sin3b; Histone deacetylase complex subunit Sin3b; Transcriptional corepressor Sin3b
Observed Band	130kD
Cell Pathway	Nucleus .
Tissue Specificity	Brain,Duodenum,Lung,Skin,
Function	function:Acts as a transcriptional repressor. Interacts with MXI1 to repress MYC responsive genes and antagonize MYC oncogenic activities. Interacts with MAD-MAX heterodimers by binding to MAD. The heterodimer then represses transcription by tethering SIN3B to DNA. Also forms a complex with FOXK1 which represses transcription.,similarity:Contains 3 PAH (paired amphipathic helix) repeats.,subunit:Interacts with FOXK1/MNF, MXI, MAD, NCOR1 and SAP30. Interaction with SDS3 enhances the interaction with HDAC1 to form a complex. Interacts with MAD3, MAD4, MAEL, REST and SETDB1 (By similarity). Interacts with HCFC1.,

Nanjing BYabscience technology Co.,Ltd



Background

function:Acts as a transcriptional repressor. Interacts with MXI1 to repress MYC responsive genes and antagonize MYC oncogenic activities. Interacts with MAD-MAX heterodimers by binding to MAD. The heterodimer then represses transcription by tethering SIN3B to DNA. Also forms a complex with FOXK1 which represses transcription.,similarity:Contains 3 PAH (paired amphipathic helix) repeats.,subunit:Interacts with FOXK1/MNF, MXI, MAD, NCOR1 and SAP30. Interaction with SDS3 enhances the interaction with HDAC1 to form a complex. Interacts with MAD3, MAD4, MAEL, REST and SETDB1 (By similarity). Interacts with HCFC1.,

matters needing attention

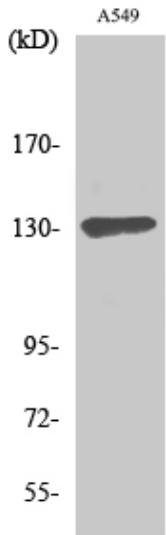
Avoid repeated freezing and thawing!

Usage suggestions

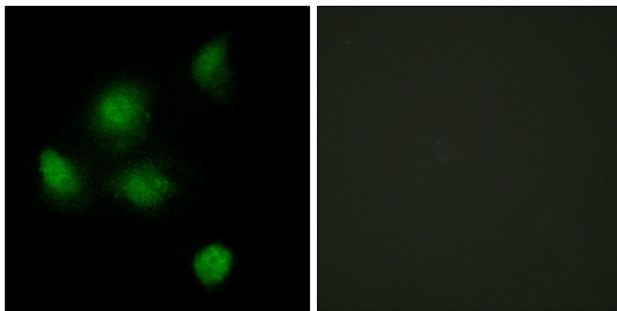
This product can be used in immunological reaction related experiments. For more information, please consult technical personnel.



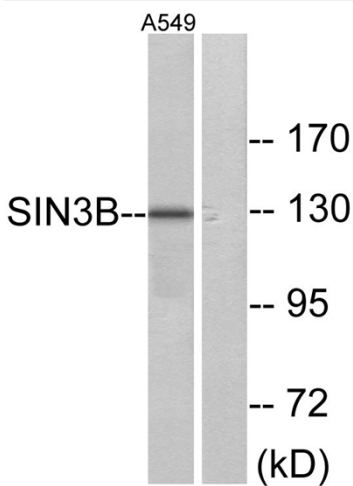
Products Images



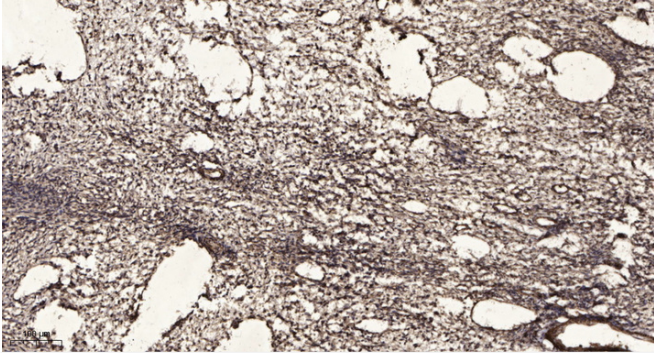
Western Blot analysis of various cells using Sin3B Polyclonal Antibody



Immunofluorescence analysis of HeLa cells, using SIN3B Antibody. The picture on the right is blocked with the synthesized peptide.



Western blot analysis of lysates from A549 cells, using SIN3B Antibody. The lane on the right is blocked with the synthesized peptide.



Immunohistochemical analysis of paraffin-embedded human oophoroma. 1, Antibody was diluted at 1:200(4° overnight). 2, Tris-EDTA,pH9.0 was used for antigen retrieval. 3,Secondary antibody was diluted at 1:200(room temperature, 45min).