



# MBD3 Polyclonal Antibody

|                           |  |
|---------------------------|--|
| <b>Catalog No</b>         | BYab-01859   |
| <b>Isotype</b>            | IgG  |
| <b>Reactivity</b>         | Human;Mouse  |
| <b>Applications</b>       | WB;ELISA;IHC   |
| <b>Gene Name</b>          | MBD3   |
| <b>Protein Name</b>       | Methyl-CpG-binding domain protein 3  |
| <b>Immunogen</b>          | The antiserum was produced against synthesized peptide derived from human MBD3. AA range:221-270   |
| <b>Specificity</b>        | MBD3 Polyclonal Antibody detects endogenous levels of MBD3 protein.  |
| <b>Formulation</b>        | Liquid in PBS containing 50% glycerol, 0.5% BSA and 0.02% sodium azide.  |
| <b>Source</b>             | Polyclonal, Rabbit,IgG   |
| <b>Purification</b>       | The antibody was affinity-purified from rabbit antiserum by affinity-chromatography using epitope-specific immunogen.  |
| <b>Dilution</b>           | WB 1:500-2000;IHC-p 1:50-300; ELISA 2000-20000   |
| <b>Concentration</b>      | 1 mg/ml  |
| <b>Purity</b>             | ≥90%   |
| <b>Storage Stability</b>  | -20°C/1 year   |
| <b>Synonyms</b>           | MBD3; Methyl-CpG-binding domain protein 3; Methyl-CpG-binding protein MBD3   |
| <b>Observed Band</b>      | 33kD   |
| <b>Cell Pathway</b>       | Nucleus. Chromosome. Nuclear, in discrete foci. Detected on chromatin, at promoter regions of active genes.  |
| <b>Tissue Specificity</b> | Brain,Cervix,Eye,Muscle,Uterus,  |
| <b>Function</b>           | function:Does not bind DNA by itself. Recruits histone deacetylases and DNA methyltransferases. Acts as transcriptional repressor and plays a role in gene silencing.,similarity:Contains 1 MBD (methyl-CpG-binding) domain.,subcellular location:Nuclear, in discrete foci.,subunit:Heterodimer with MBD2. Part of the NuRD and the MeCP1 complex. Binds HDAC1, MTA2, DNMT1, p66-alpha and p66-beta., |
| <b>Background</b>         | DNA methylation is the major modification of eukaryotic genomes and plays an essential role in mammalian development. This gene belongs to a family of nuclear proteins which are characterized by the presence of a methyl-CpG binding domain (MBD). The encoded protein is a subunit of the NuRD, a  |

Nanjing BYabscience technology Co.,Ltd



multisubunit complex containing nucleosome remodeling and histone deacetylase activities. Unlike the other family members, the encoded protein is not capable of binding to methylated DNA. The protein mediates the association of metastasis-associated protein 2 with the core histone deacetylase complex. Alternative splicing results in multiple transcript variants of this gene. [provided by RefSeq, Jul 2013],

**matters needing attention**

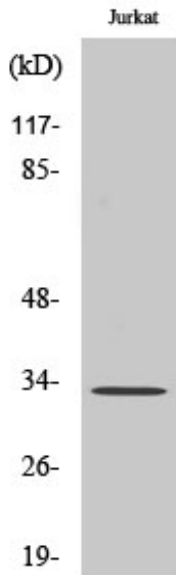
Avoid repeated freezing and thawing!

**Usage suggestions**

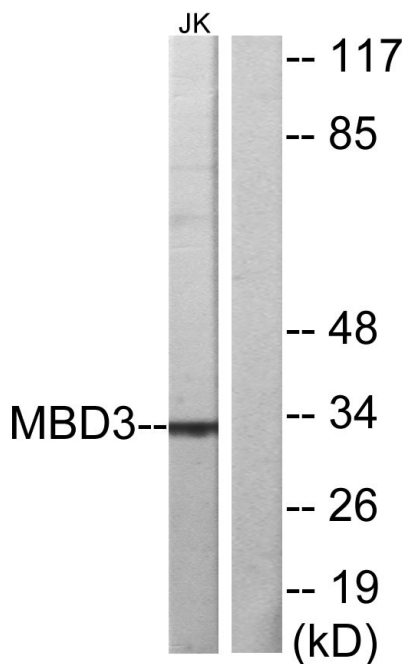
This product can be used in immunological reaction related experiments. For more information, please consult technical personnel.



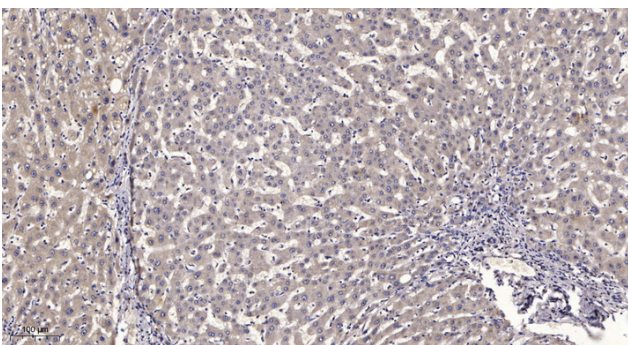
## Products Images



Western Blot analysis of various cells using MBD3 Polyclonal Antibody



Western blot analysis of lysates from Jurkat cells, using MBD3 Antibody. The lane on the right is blocked with the synthesized peptide.



Immunohistochemical analysis of paraffin-embedded human liver cancer. 1, Antibody was diluted at 1:200(4° overnight). 2, Tris-EDTA,pH9.0 was used for antigen retrieval. 3,Secondary antibody was diluted at 1:200(room temperature, 45min).

Nanjing BYabscience technology Co.,Ltd



**Nanjing BYabscience technology Co.,Ltd**

网址: [www.njbybio.com](http://www.njbybio.com)

官方热线: 025-5229-8998

监督电话: 15950492658