



Mash2 Polyclonal Antibody

Catalog No	BYab-01857
Isotype	IgG
Reactivity	Human;Mouse;Rat
Applications	WB;ELISA
Gene Name	ASCL2
Protein Name	Achaete-scute homolog 2
Immunogen	Synthesized peptide derived from Mash2 . at AA range: 1-80
Specificity	Mash2 Polyclonal Antibody detects endogenous levels of Mash2 protein.
Formulation	Liquid in PBS containing 50% glycerol, 0.5% BSA and 0.02% sodium azide.
Source	Polyclonal, Rabbit,IgG
Purification	The antibody was affinity-purified from rabbit antiserum by affinity-chromatography using epitope-specific immunogen.
Dilution	Western Blot: 1/500 - 1/2000. ELISA: 1/40000. Not yet tested in other applications.
Concentration	1 mg/ml
Purity	≥90%
Storage Stability	-20°C/1 year
Synonyms	ASCL2; BHLHA45; HASH2; Achaete-scute homolog 2; ASH-2; hASH2; Class A basic helix-loop-helix protein 45; bHLHa45; Mash2
Observed Band	25kD
Cell Pathway	Nucleus .
Tissue Specificity	Expressed specifically in the extravillous trophoblasts of the developing placenta.
Function	function:AS-C proteins are involved in the determination of the neuronal precursors in the peripheral nervous system and the central nervous system.,similarity:Contains 1 basic helix-loop-helix (bHLH) domain.,subunit:Efficient DNA binding requires dimerization with another bHLH protein.,tissue specificity:Expressed specifically in the extravillous trophoblasts of the developing placenta.,
Background	achaete-scute family bHLH transcription factor 2(ASCL2) Homo sapiens This gene is a member of the basic helix-loop-helix (BHLH) family of transcription factors. It activates transcription by binding to the E box (5''-CANNTG-3'). Dimerization with other BHLH proteins is required

Nanjing BYabscience technology Co.,Ltd



for efficient DNA binding. Involved in the determination of the neuronal precursors in the peripheral nervous system and the central nervous system. [provided by RefSeq, Jul 2008],

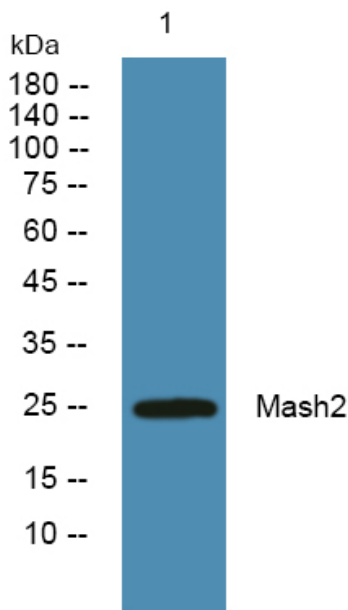
matters needing attention

Avoid repeated freezing and thawing!

Usage suggestions

This product can be used in immunological reaction related experiments. For more information, please consult technical personnel.

Products Images



Western blot analysis of lysates from A431 cells, primary antibody was diluted at 1:1000, 4° over night