



# Lyl-1 Polyclonal Antibody

<b>Catalog No</b>	BYab-01852
<b>Isotype</b>	IgG
<b>Reactivity</b>	Human;Mouse;Rat
<b>Applications</b>	IHC;IF;ELISA
<b>Gene Name</b>	LYL1
<b>Protein Name</b>	Protein lyl-1
<b>Immunogen</b>	The antiserum was produced against synthesized peptide derived from human Lyl-1. AA range:151-200
<b>Specificity</b>	Lyl-1 Polyclonal Antibody detects endogenous levels of Lyl-1 protein.
<b>Formulation</b>	Liquid in PBS containing 50% glycerol, 0.5% BSA and 0.02% sodium azide.
<b>Source</b>	Polyclonal, Rabbit,IgG
<b>Purification</b>	The antibody was affinity-purified from rabbit antiserum by affinity-chromatography using epitope-specific immunogen.
<b>Dilution</b>	IHC: 1/100 - 1/300. ELISA: 1/10000.. IF 1:50-200
<b>Concentration</b>	1 mg/ml
<b>Purity</b>	≥90%
<b>Storage Stability</b>	-20°C/1 year
<b>Synonyms</b>	LYL1; BHLHA18; Protein lyl-1; Class A basic helix-loop-helix protein 18; bHLHa18; Lymphoblastic leukemia-derived sequence 1
<b>Observed Band</b>	
<b>Cell Pathway</b>	Nucleus .
<b>Tissue Specificity</b>	Lymph,
<b>Function</b>	disease:A chromosomal aberration involving LYL1 may be a cause of a form of T-cell acute lymphoblastic leukemia (T-ALL). Translocation t(7;19)(q35;p13) with TCRB.,similarity:Contains 1 basic helix-loop-helix (bHLH) domain.,subunit:Efficient DNA binding requires dimerization with another bHLH protein.,
<b>Background</b>	This gene represents a basic helix-loop-helix transcription factor. The encoded protein may play roles in blood vessel maturation and hematopoeisis. A translocation between this locus and the T cell receptor beta locus (GeneID 6957) on chromosome 7 has been associated with acute lymphoblastic leukemia. [provided by RefSeq, Sep 2010],

**Nanjing BYabscience technology Co.,Ltd**



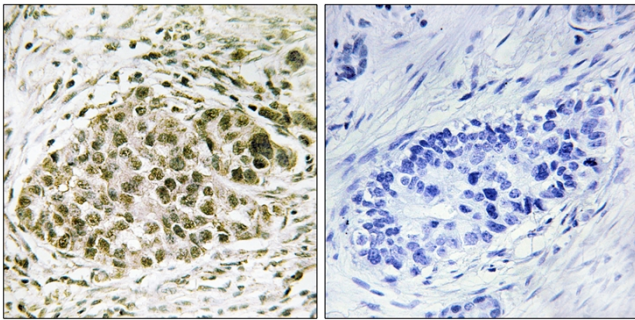
**matters needing attention**

Avoid repeated freezing and thawing!

**Usage suggestions**

This product can be used in immunological reaction related experiments. For more information, please consult technical personnel.

**Products Images**



Immunohistochemistry analysis of paraffin-embedded human lung carcinoma tissue, using Lyl-1 Antibody. The picture on the right is blocked with the synthesized peptide.