



# LMO4 Polyclonal Antibody

<b>Catalog No</b>	BYab-01847
<b>Isotype</b>	IgG
<b>Reactivity</b>	Human;Mouse;Rat
<b>Applications</b>	WB;IHC;IF;ELISA
<b>Gene Name</b>	LMO4
<b>Protein Name</b>	LIM domain transcription factor LMO4
<b>Immunogen</b>	The antiserum was produced against synthesized peptide derived from human LMO4. AA range:116-165
<b>Specificity</b>	LMO4 Polyclonal Antibody detects endogenous levels of LMO4 protein.
<b>Formulation</b>	Liquid in PBS containing 50% glycerol, 0.5% BSA and 0.02% sodium azide.
<b>Source</b>	Polyclonal, Rabbit,IgG
<b>Purification</b>	The antibody was affinity-purified from rabbit antiserum by affinity-chromatography using epitope-specific immunogen.
<b>Dilution</b>	Western Blot: 1/500 - 1/2000. Immunohistochemistry: 1/100 - 1/300. Immunofluorescence: 1/200 - 1/1000. ELISA: 1/20000. Not yet tested in other applications.
<b>Concentration</b>	1 mg/ml
<b>Purity</b>	≥90%
<b>Storage Stability</b>	-20°C/1 year
<b>Synonyms</b>	LMO4; LIM domain transcription factor LMO4; Breast tumor autoantigen; LIM domain only protein 4; LMO-4
<b>Observed Band</b>	44kD
<b>Cell Pathway</b>	transcription factor complex,cell leading edge,
<b>Tissue Specificity</b>	Eye,Lung,Mammary tumor,PNS,
<b>Function</b>	function:Probable transcriptional factor.,similarity:Contains 2 LIM zinc-binding domains.,subunit:Interacts strongly with LDBS. Interacts with DEAF1, CLIM1 and CLIM2.,
<b>Background</b>	LIM domain only 4(LMO4) Homo sapiens This gene encodes a cysteine-rich protein that contains two LIM domains but lacks a DNA-binding homeodomain. The encoded protein may play a role as a transcriptional regulator or as an oncogene. [provided by RefSeq, Aug 2008],

Nanjing BYabscience technology Co.,Ltd



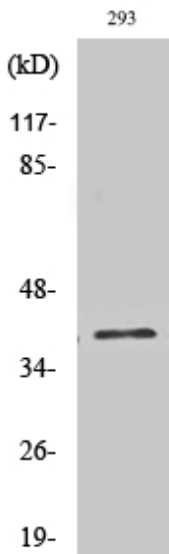
**matters needing attention**

Avoid repeated freezing and thawing!

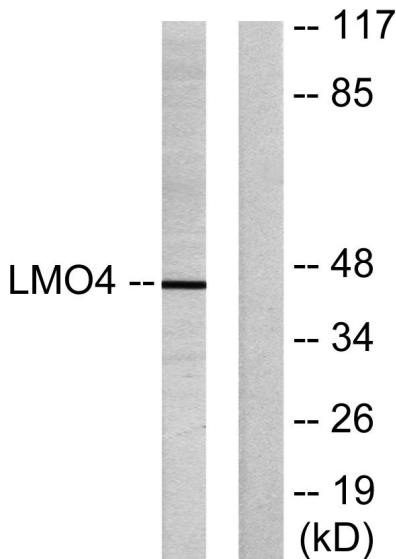
**Usage suggestions**

This product can be used in immunological reaction related experiments. For more information, please consult technical personnel.

## Products Images

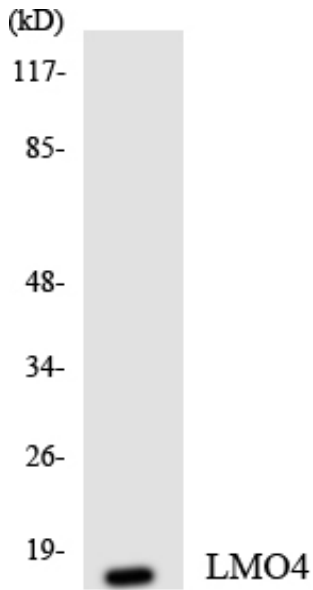


Western Blot analysis of various cells using LMO4 Polyclonal Antibody cells nucleus extracted by Minute TM Cytoplasmic and Nuclear Fractionation kit (SC-003, Inventbiotech, MN, USA).

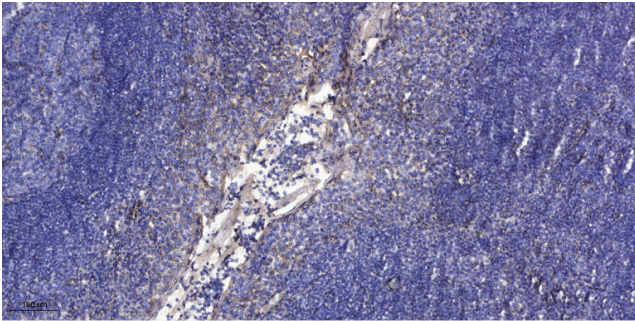


Western blot analysis of lysates from 293 cells, using LMO4 Antibody. The lane on the right is blocked with the synthesized peptide.

Nanjing BYabscience technology Co.,Ltd



Western blot analysis of the lysates from HepG2 cells using LMO4 antibody.



Immunohistochemical analysis of paraffin-embedded human tonsil. 1, Antibody was diluted at 1:200(4° overnight). 2, Tris-EDTA,pH9.0 was used for antigen retrieval. 3,Secondary antibody was diluted at 1:200(room temperature, 30min).