



# LMO3 Polyclonal Antibody

<b>Catalog No</b>	BYab-01846
<b>Isotype</b>	IgG
<b>Reactivity</b>	Human;Mouse;Rat;Monkey
<b>Applications</b>	WB;IHC;IF;ELISA
<b>Gene Name</b>	LMO3
<b>Protein Name</b>	LIM domain only protein 3
<b>Immunogen</b>	The antiserum was produced against synthesized peptide derived from human LMO3. AA range:96-145
<b>Specificity</b>	LMO3 Polyclonal Antibody detects endogenous levels of LMO3 protein.
<b>Formulation</b>	Liquid in PBS containing 50% glycerol, 0.5% BSA and 0.02% sodium azide.
<b>Source</b>	Polyclonal, Rabbit,IgG
<b>Purification</b>	The antibody was affinity-purified from rabbit antiserum by affinity-chromatography using epitope-specific immunogen.
<b>Dilution</b>	WB: 1/500 - 1/2000. IHC: 1/100 - 1/300. ELISA: 1/10000.. IF 1:50-200
<b>Concentration</b>	1 mg/ml
<b>Purity</b>	≥90%
<b>Storage Stability</b>	-20°C/1 year
<b>Synonyms</b>	LMO3; RBTN3; RBTNL2; RHOM3; LIM domain only protein 3; LMO-3; Neuronal-specific transcription factor DAT1; Rhombotin-3
<b>Observed Band</b>	17kD
<b>Cell Pathway</b>	cytoplasm,
<b>Tissue Specificity</b>	Brain,
<b>Function</b>	similarity:Contains 2 LIM zinc-binding domains.,
<b>Background</b>	LIM domain only 3(LMO3) Homo sapiens The protein encoded by this gene belongs to the rhombotin family of cysteine-rich LIM domain oncogenes. This gene is predominantly expressed in the brain. Related family members, LMO1 and LMO2 on chromosome 11, have been reported to be involved in chromosomal translocations in T-cell leukemia. Many alternatively spliced transcript variants have been found for this gene. [provided by RefSeq, Aug 2011],

Nanjing BYabscience technology Co.,Ltd



**matters needing attention**

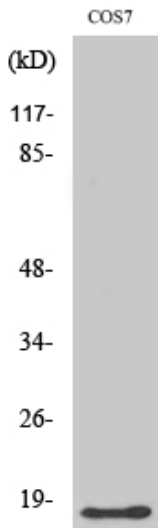
Avoid repeated freezing and thawing!

**Usage suggestions**

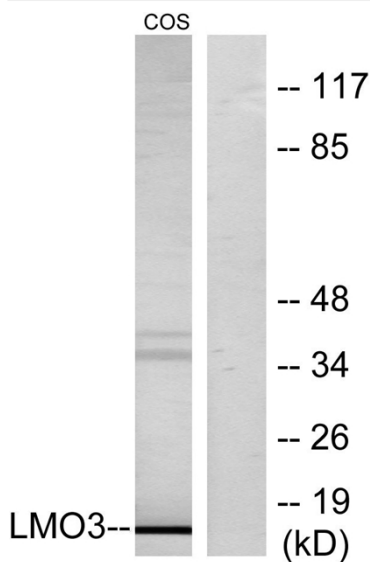
This product can be used in immunological reaction related experiments. For more information, please consult technical personnel.



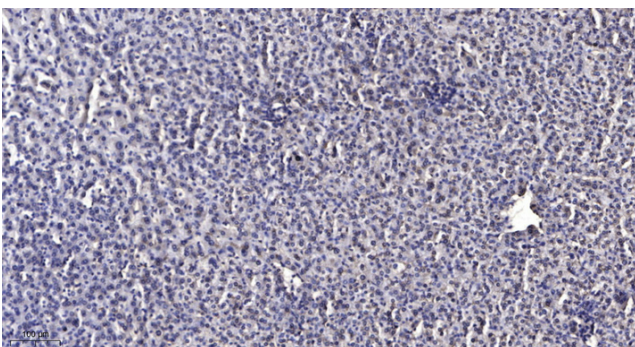
## Products Images



Western Blot analysis of various cells using LMO3 Polyclonal Antibody



Western blot analysis of lysates from COS7 cells, using LMO3 Antibody. The lane on the right is blocked with the synthesized peptide.



Immunohistochemical analysis of paraffin-embedded human liver cancer. 1, Antibody was diluted at 1:200(4° overnight). 2, Tris-EDTA,pH9.0 was used for antigen retrieval. 3,Secondary antibody was diluted at 1:200(room temperature, 45min).