



# Liprin $\beta$ 1 Polyclonal Antibody

<b>Catalog No</b>	BYab-01845
<b>Isotype</b>	IgG
<b>Reactivity</b>	Human;Mouse
<b>Applications</b>	WB;IHC
<b>Gene Name</b>	PPFIBP1
<b>Protein Name</b>	Liprin-beta-1
<b>Immunogen</b>	The antiserum was produced against synthesized peptide derived from human LIPB1. AA range:300-349
<b>Specificity</b>	Liprin $\beta$ 1 Polyclonal Antibody detects endogenous levels of Liprin $\beta$ 1 protein.
<b>Formulation</b>	Liquid in PBS containing 50% glycerol, 0.5% BSA and 0.02% sodium azide.
<b>Source</b>	Polyclonal, Rabbit,IgG
<b>Purification</b>	The antibody was affinity-purified from rabbit antiserum by affinity-chromatography using epitope-specific immunogen.
<b>Dilution</b>	WB 1:500-2000;IHC-p 1:50-300
<b>Concentration</b>	1 mg/ml
<b>Purity</b>	$\geq$ 90%
<b>Storage Stability</b>	-20°C/1 year
<b>Synonyms</b>	PPFIBP1; KIAA1230; Liprin-beta-1; Protein tyrosine phosphatase receptor type f polypeptide-interacting protein-binding protein 1; PTPRF-interacting protein-binding protein 1; hSGT2
<b>Observed Band</b>	115kD
<b>Cell Pathway</b>	plasma membrane,cell-cell adherens junction,focal adhesion,
<b>Tissue Specificity</b>	Widely expressed. Absent in liver.
<b>Function</b>	domain:The N-terminal coiled coil regions mediate homodimerization preferentially and heterodimerization type beta/beta. The C-terminal, non-coiled coil regions mediate heterodimerization type beta/alpha and interaction with S100A4.,function:May regulate the disassembly of focal adhesions. Did not bind receptor-like tyrosine phosphatases type 2A.,similarity:Belongs to the liprin family. Liprin-beta subfamily.,similarity:Contains 3 SAM (sterile alpha motif) domains.,subunit:Forms homodimers and heterodimers. Interacts with S100A4 in a calcium-dependent mode.,tissue specificity:Widely expressed. Absent in liver.,

Nanjing BYabscience technology Co.,Ltd



---

**Background**

The protein encoded by this gene is a member of the LAR protein-tyrosine phosphatase-interacting protein (liprin) family. Liprins interact with members of LAR family of transmembrane protein tyrosine phosphatases, which are known to be important for axon guidance and mammary gland development. It has been proposed that liprins are multivalent proteins that form complex structures and act as scaffolds for the recruitment and anchoring of LAR family of tyrosine phosphatases. This protein was found to interact with S100A4, a calcium-binding protein related to tumor invasiveness and metastasis. In vitro experiment demonstrated that the interaction inhibited the phosphorylation of this protein by protein kinase C and protein kinase CK2. Alternatively spliced transcript variants encoding distinct isoforms have been reported. [provided by RefSeq, Jul 2008],

---

**matters needing attention**

Avoid repeated freezing and thawing!

---

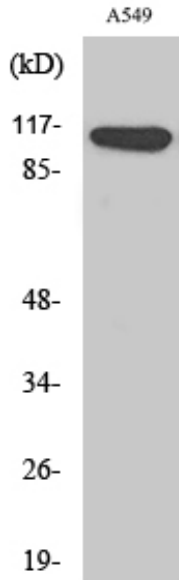
**Usage suggestions**

This product can be used in immunological reaction related experiments. For more information, please consult technical personnel.

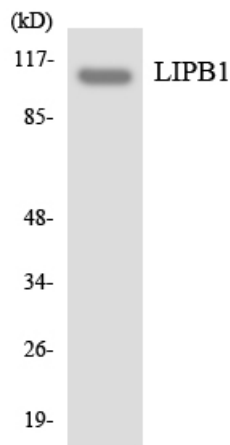
---



## Products Images

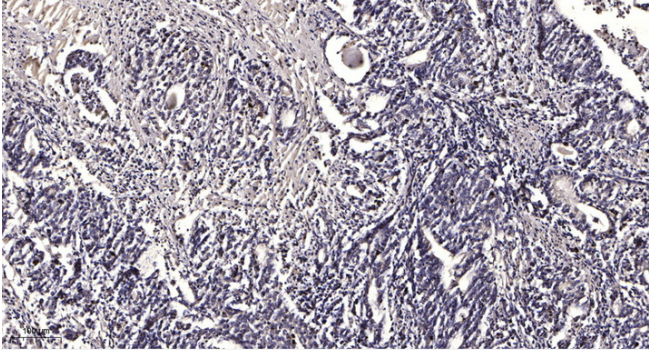


Western Blot analysis of various cells using Liprin  $\beta$ 1 Polyclonal Antibody diluted at 1:2000



Western blot analysis of the lysates from COLO205 cells using LIPB1 antibody.

Nanjing BYabscience technology Co.,Ltd



Immunohistochemical analysis of paraffin-embedded human Gastric adenocarcinoma. 1, Antibody was diluted at 1:200(4° overnight). 2, Tris-EDTA,pH9.0 was used for antigen retrieval. 3,Secondary antibody was diluted at 1:200(room temperature, 45min).