



KOX17 Polyclonal Antibody

Catalog No	BYab-01843
Isotype	IgG
Reactivity	Human;Mouse;Rat
Applications	WB;IHC;IF;ELISA
Gene Name	ZNF24
Protein Name	Zinc finger protein 24
Immunogen	The antiserum was produced against synthesized peptide derived from human ZNF24. AA range:10-59
Specificity	KOX17 Polyclonal Antibody detects endogenous levels of KOX17 protein.
Formulation	Liquid in PBS containing 50% glycerol, 0.5% BSA and 0.02% sodium azide.
Source	Polyclonal, Rabbit,IgG
Purification	The antibody was affinity-purified from rabbit antiserum by affinity-chromatography using epitope-specific immunogen.
Dilution	WB: 1/500 - 1/2000. IHC: 1/100 - 1/300. ELISA: 1/10000.. IF 1:50-200
Concentration	1 mg/ml
Purity	≥90%
Storage Stability	-20°C/1 year
Synonyms	ZNF24; KOX17; ZNF191; ZSCAN3; Zinc finger protein 24; Retinoic acid suppression protein A; RSG-A; Zinc finger and SCAN domain-containing protein 3; Zinc finger protein 191; Zinc finger protein KOX17
Observed Band	48kD
Cell Pathway	Nucleus .
Tissue Specificity	Expressed in many tissues except in heart.
Function	function:May function as a transcription factor. Seems to repress transcription.,PTM:Phosphorylated upon DNA damage, probably by ATM or ATR.,PTM:Sumoylated.,similarity:Belongs to the krueppel C2H2-type zinc-finger protein family.,similarity:Contains 1 SCAN box domain.,similarity:Contains 4 C2H2-type zinc fingers.,tissue specificity:Expressed in many tissues except in heart.,
Background	function:May function as a transcription factor. Seems to repress transcription.,PTM:Phosphorylated upon DNA damage, probably by ATM or

Nanjing BYabscience technology Co.,Ltd



ATR.,PTM:Sumoylated.,similarity:Belongs to the krueppel C2H2-type zinc-finger protein family.,similarity:Contains 1 SCAN box domain.,similarity:Contains 4 C2H2-type zinc fingers.,tissue specificity:Expressed in many tissues except in heart.,

matters needing attention

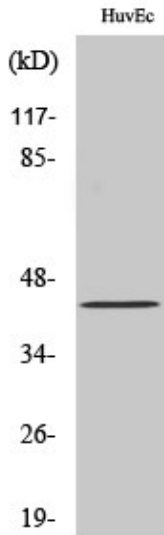
Avoid repeated freezing and thawing!

Usage suggestions

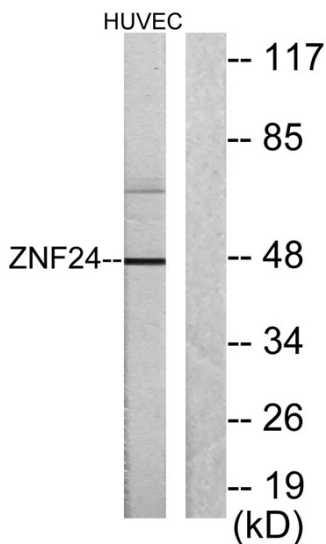
This product can be used in immunological reaction related experiments. For more information, please consult technical personnel.



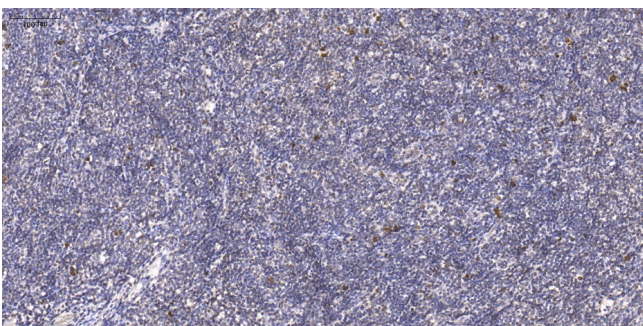
Products Images



Western Blot analysis of various cells using KOX17 Polyclonal Antibody cells nucleus extracted by Minute TM Cytoplasmic and Nuclear Fractionation kit (SC-003, Inventbiotech, MN, USA).



Western blot analysis of lysates from HUVEC cells, using ZNF24 Antibody. The lane on the right is blocked with the synthesized peptide.



Immunohistochemical analysis of paraffin-embedded human tonsil. 1, Antibody was diluted at 1:200(4° overnight). 2, Tris-EDTA, pH9.0 was used for antigen retrieval. 3, Secondary antibody was diluted at 1:200(room temperature, 45min).