



KOX11 Polyclonal Antibody

Catalog No	BYab-01842
Isotype	IgG
Reactivity	Human;Mouse;Rat
Applications	WB;ELISA;IHC
Gene Name	ZNF18
Protein Name	Zinc finger protein 18
Immunogen	The antiserum was produced against synthesized peptide derived from human ZNF18. AA range:261-310
Specificity	KOX11 Polyclonal Antibody detects endogenous levels of KOX11 protein.
Formulation	Liquid in PBS containing 50% glycerol, 0.5% BSA and 0.02% sodium azide.
Source	Polyclonal, Rabbit,IgG
Purification	The antibody was affinity-purified from rabbit antiserum by affinity-chromatography using epitope-specific immunogen.
Dilution	WB 1:500-2000;IHC-p 1:50-300; ELISA 2000-20000
Concentration	1 mg/ml
Purity	≥90%
Storage Stability	-20°C/1 year
Synonyms	ZNF18; HDSG1; KOX11; ZKSCAN6; ZNF535; Zinc finger protein 18; Heart development-specific gene 1 protein; Zinc finger protein 535; Zinc finger protein KOX11; Zinc finger protein with KRAB and SCAN domains 6
Observed Band	62kD
Cell Pathway	Nucleus .
Tissue Specificity	Brain,Cerebellum,Lymphoid,Prostate,
Function	function:May be involved in transcriptional regulation.,similarity:Belongs to the krueppel C2H2-type zinc-finger protein family.,similarity:Contains 1 KRAB domain.,similarity:Contains 1 SCAN box domain.,similarity:Contains 5 C2H2-type zinc fingers.,
Background	function:May be involved in transcriptional regulation.,similarity:Belongs to the krueppel C2H2-type zinc-finger protein family.,similarity:Contains 1 KRAB domain.,similarity:Contains 1 SCAN box domain.,similarity:Contains 5 C2H2-type zinc fingers.,

Nanjing BYabscience technology Co.,Ltd



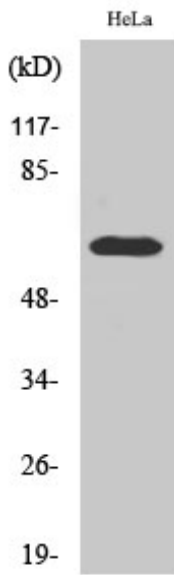
matters needing attention

Avoid repeated freezing and thawing!

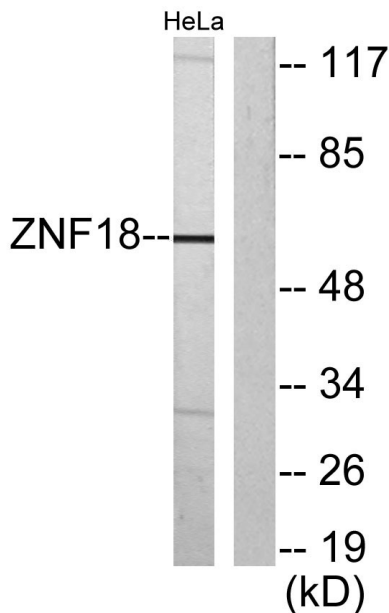
Usage suggestions

This product can be used in immunological reaction related experiments. For more information, please consult technical personnel.

Products Images

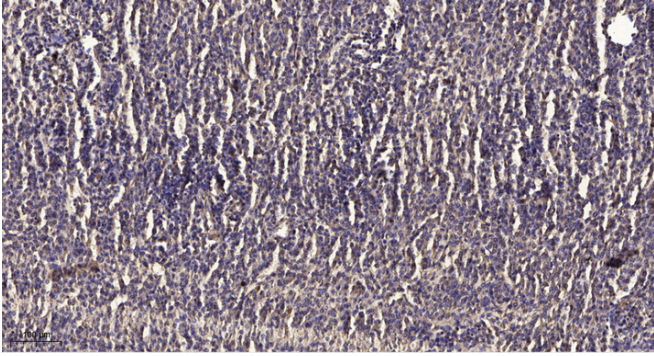


Western Blot analysis of various cells using KOX11 Polyclonal Antibody



Western blot analysis of lysates from HeLa cells, using ZNF18 Antibody. The lane on the right is blocked with the synthesized peptide.

Nanjing BYabscience technology Co.,Ltd



Immunohistochemical analysis of paraffin-embedded human meningioma. 1, Antibody was diluted at 1:200(4 ° overnight). 2, Tris-EDTA,pH9.0 was used for antigen retrieval. 3,Secondary antibody was diluted at 1:200(room temperature, 45min).