



KMT1B Polyclonal Antibody

Catalog No	BYab-01841
Isotype	IgG
Reactivity	Human;Mouse
Applications	WB;ELISA;IHC
Gene Name	SUV39H2
Protein Name	Histone-lysine N-methyltransferase SUV39H2
Immunogen	The antiserum was produced against synthesized peptide derived from human SUV39H2. AA range:111-160
Specificity	KMT1B Polyclonal Antibody detects endogenous levels of KMT1B protein.
Formulation	Liquid in PBS containing 50% glycerol, 0.5% BSA and 0.02% sodium azide.
Source	Polyclonal, Rabbit,IgG
Purification	The antibody was affinity-purified from rabbit antiserum by affinity-chromatography using epitope-specific immunogen.
Dilution	WB 1:500-2000;IHC-p 1:50-300; ELISA 2000-20000
Concentration	1 mg/ml
Purity	≥90%
Storage Stability	-20°C/1 year
Synonyms	SUV39H2; KMT1B; Histone-lysine N-methyltransferase SUV39H2; Histone H3-K9 methyltransferase 2; H3-K9-HMTase 2; Lysine N-methyltransferase 1B; Suppressor of variegation 3-9 homolog 2; Su(var)3-9 homolog 2
Observed Band	46kD
Cell Pathway	Nucleus . Chromosome, centromere . Associates with centromeric constitutive heterochromatin. .
Tissue Specificity	Bone marrow,Muscle,Testis,
Function	catalytic activity:S-adenosyl-L-methionine + histone L-lysine = S-adenosyl-L-homocysteine + histone N(6)-methyl-L-lysine.,domain:Although the SET domain contains the active site of enzymatic activity, both pre-SET and post-SET domains are required for methyltransferase activity. The SET domain also participates to stable binding to heterochromatin.,function:Histone methyltransferase that specifically trimethylates 'Lys-9' of histone H3 using monomethylated H3 'Lys-9' as substrate. H3 'Lys-9' trimethylation represents a specific tag for epigenetic transcriptional repression by recruiting HP1 (CBX1, CBX3 and/or CBX5) proteins to methylated histones. Mainly functions in

Nanjing BYabscience technology Co.,Ltd



heterochromatin regions, thereby playing a central role in the establishment of constitutive heterochromatin at pericentric and telomere regions. H3 'Lys-9' trimethylation is also required to direct DNA methylation at perice

Background

catalytic activity:S-adenosyl-L-methionine + histone L-lysine = S-adenosyl-L-homocysteine + histone N(6)-methyl-L-lysine.,domain:Although the SET domain contains the active site of enzymatic activity, both pre-SET and post-SET domains are required for methyltransferase activity. The SET domain also participates to stable binding to heterochromatin.,function:Histone methyltransferase that specifically trimethylates 'Lys-9' of histone H3 using monomethylated H3 'Lys-9' as substrate. H3 'Lys-9' trimethylation represents a specific tag for epigenetic transcriptional repression by recruiting HP1 (CBX1, CBX3 and/or CBX5) proteins to methylated histones. Mainly functions in heterochromatin regions, thereby playing a central role in the establishment of constitutive heterochromatin at pericentric and telomere regions. H3 'Lys-9' trimethylation is also required to direct DNA methylation at pericentric repeats. SUV39H1 is targeted to histone H3 via its interaction with RB1 and is involved in many processes, such as cell cycle regulation, transcriptional repression and regulation of telomere length. May participate in regulation of higher order chromatin organization during spermatogenesis.,similarity:Belongs to the histone-lysine methyltransferase family. Suvar3-9 subfamily.,similarity:Contains 1 chromo domain.,similarity:Contains 1 post-SET domain.,similarity:Contains 1 pre-SET domain.,similarity:Contains 1 SET domain.,subcellular location:Associates with centromeric constitutive heterochromatin.,subunit:Interacts with SMAD5.,

matters needing attention

Avoid repeated freezing and thawing!

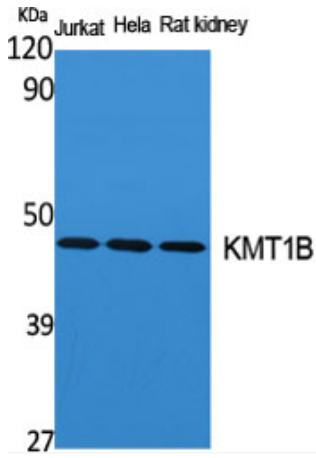
Usage suggestions

This product can be used in immunological reaction related experiments. For more information, please consult technical personnel.

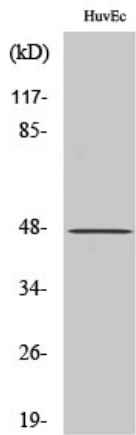
Nanjing BYabscience technology Co.,Ltd



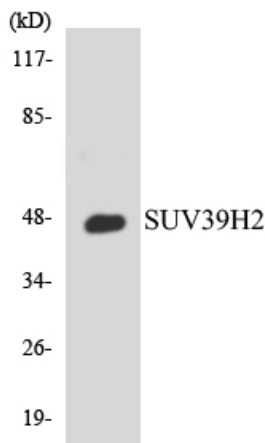
Products Images



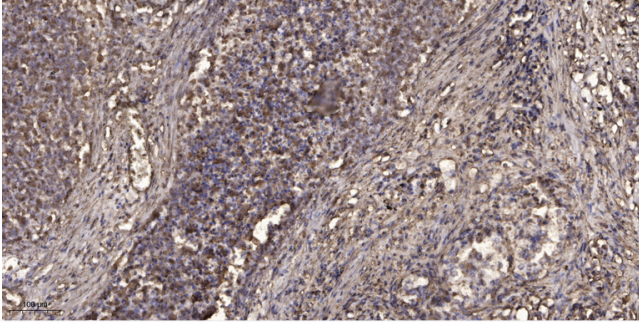
Western Blot analysis of various cells using KMT1B Polyclonal Antibody cells nucleus extracted by Minute TM Cytoplasmic and Nuclear Fractionation kit (SC-003, Inventbiotech, MN, USA).



Western Blot analysis of COLO205 cells using KMT1B Polyclonal Antibody cells nucleus extracted by Minute TM Cytoplasmic and Nuclear Fractionation kit (SC-003, Inventbiotech, MN, USA).



Western blot analysis of the lysates from 293 cells using SUV39H2 antibody.



Immunohistochemical analysis of paraffin-embedded human Squamous cell carcinoma of lung. 1, Antibody was diluted at 1:200(4° overnight). 2, Tris-EDTA,pH9.0 was used for antigen retrieval. 3,Secondary antibody was diluted at 1:200(room temperature, 45min).