



KLF8 Polyclonal Antibody

Catalog No	BYab-01840
Isotype	IgG
Reactivity	Human;Rat;Mouse;
Applications	IHC;IF;ELISA
Gene Name	KLF8
Protein Name	Krueppel-like factor 8
Immunogen	The antiserum was produced against synthesized peptide derived from human KLF8. AA range:191-240
Specificity	KLF8 Polyclonal Antibody detects endogenous levels of KLF8 protein.
Formulation	Liquid in PBS containing 50% glycerol, 0.5% BSA and 0.02% sodium azide.
Source	Polyclonal, Rabbit,IgG
Purification	The antibody was affinity-purified from rabbit antiserum by affinity-chromatography using epitope-specific immunogen.
Dilution	IHC: 1/100 - 1/300. ELISA: 1/10000.. IF 1:50-200
Concentration	1 mg/ml
Purity	≥90%
Storage Stability	-20°C/1 year
Synonyms	KLF8; BKLF3; ZNF741; Krueppel-like factor 8; Basic krueppel-like factor 3; Zinc finger protein 741
Observed Band	
Cell Pathway	Nucleus .
Tissue Specificity	Ubiquitous.
Function	function:Transcriptional repressor and activator. Binds to CACCC-boxes promoter elements. Also binds the GT-box of cyclin D1 promoter and mediates cell cycle progression at G(1) phase as a downstream target of focal adhesion kinase (FAK).,PTM:Sumoylation at Lys-67 represses transcriptional activity and reduces cell cycle progression into the G(1) phase. Has no effect on subcellular location.,similarity:Belongs to the Sp1 C2H2-type zinc-finger protein family.,similarity:Contains 3 C2H2-type zinc fingers.,subunit:Interacts with corepressor CtBP2. Interacts with PIAS1, PIAS2, AND PIAS4; the interaction with each ligase sumoylates KLF8.,tissue specificity:Ubiquitous.,

Nanjing BYabscience technology Co.,Ltd



Background

This gene encodes a protein which is a member of the Sp/KLF family of transcription factors. Members of this family contain a C-terminal DNA-binding domain with three Kruppel-like zinc fingers. The encoded protein is thought to play an important role in the regulation of epithelial to mesenchymal transition, a process which occurs normally during development but also during metastasis. A pseudogene has been identified on chromosome 16. Alternative splicing results in multiple transcript variants. [provided by RefSeq, Apr 2009],

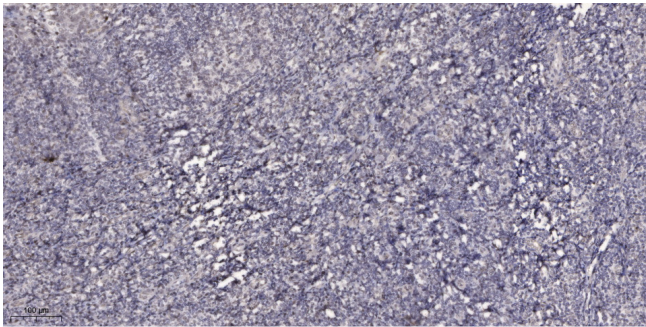
matters needing attention

Avoid repeated freezing and thawing!

Usage suggestions

This product can be used in immunological reaction related experiments. For more information, please consult technical personnel.

Products Images



Immunohistochemical analysis of paraffin-embedded human tonsil. 1, Antibody was diluted at 1:200(4° overnight). 2, Tris-EDTA,pH9.0 was used for antigen retrieval. 3,Secondary antibody was diluted at 1:200(room temperature, 45min).