



KLF7 Polyclonal Antibody

| | |
|---------------------------|---|
| Catalog No | BYab-01839 |
| Isotype | IgG |
| Reactivity | Human;Mouse |
| Applications | WB;IHC |
| Gene Name | KLF7 |
| Protein Name | Krueppel-like factor 7 |
| Immunogen | The antiserum was produced against synthesized peptide derived from human KLF7. AA range:171-220 |
| Specificity | KLF7 Polyclonal Antibody detects endogenous levels of KLF7 protein. |
| Formulation | Liquid in PBS containing 50% glycerol, 0.5% BSA and 0.02% sodium azide. |
| Source | Polyclonal, Rabbit,IgG |
| Purification | The antibody was affinity-purified from rabbit antiserum by affinity-chromatography using epitope-specific immunogen. |
| Dilution | WB 1:500-2000;IHC-p 1:50-300 |
| Concentration | 1 mg/ml |
| Purity | ≥90% |
| Storage Stability | -20°C/1 year |
| Synonyms | KLF7; UKLF; Krueppel-like factor 7; Ubiquitous krueppel-like factor |
| Observed Band | 41kD |
| Cell Pathway | Nucleus . |
| Tissue Specificity | Widely expressed. |
| Function | domain:The acidic N-terminal part may favor interaction with the basic domain of transcription factors.,function:Transcriptional activator. Binds in vitro to the CACCC motif of the beta-globin promoter and to the SP1 recognition sequence.,similarity:Belongs to the krueppel C2H2-type zinc-finger protein family.,similarity:Contains 3 C2H2-type zinc fingers.,tissue specificity:Ubiquitous and highly expressed in brain and spinal cord in the adult, and in kidney and brain in the embryo., |
| Background | The protein encoded by this gene is a member of the Kruppel-like transcriptional regulator family. Members in this family regulate cell proliferation, differentiation and survival and contain three C2H2 zinc fingers at the C-terminus that mediate |

Nanjing BYabscience technology Co.,Ltd



binding to GC-rich sites. This protein may contribute to the progression of type 2 diabetes by inhibiting insulin expression and secretion in pancreatic beta-cells and by deregulating adipocytokine secretion in adipocytes. A pseudogene of this gene is located on the long arm of chromosome 3. Alternative splicing results in multiple transcript variants. [provided by RefSeq, Aug 2012],

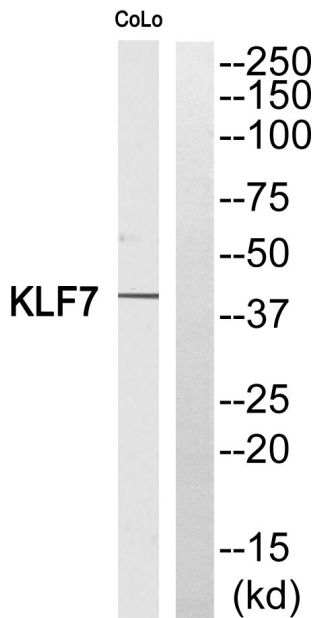
matters needing attention

Avoid repeated freezing and thawing!

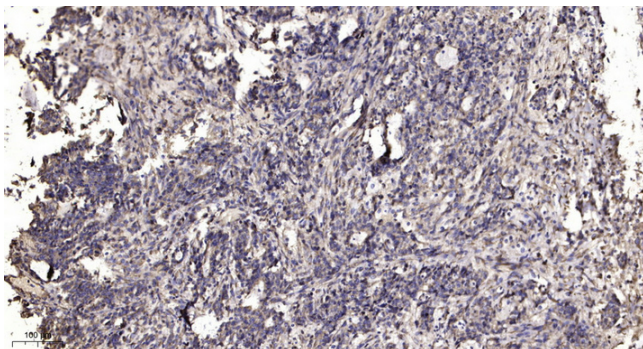
Usage suggestions

This product can be used in immunological reaction related experiments. For more information, please consult technical personnel.

Products Images



Western blot analysis of KLF7 Antibody. The lane on the right is blocked with the KLF7 peptide.



Immunohistochemical analysis of paraffin-embedded human Gastric adenocarcinoma. 1, Antibody was diluted at 1:200(4° overnight). 2, Tris-EDTA,pH9.0 was used for antigen retrieval. 3,Secondary antibody was diluted at 1:200(room temperature, 45min).