



# Islet-2 Polyclonal Antibody

<b>Catalog No</b>	BYab-01829
<b>Isotype</b>	IgG
<b>Reactivity</b>	Human;Mouse;Rat
<b>Applications</b>	WB;IHC
<b>Gene Name</b>	ISL2
<b>Protein Name</b>	Insulin gene enhancer protein ISL-2
<b>Immunogen</b>	The antiserum was produced against synthesized peptide derived from human ISL2. AA range:161-210
<b>Specificity</b>	Islet-2 Polyclonal Antibody detects endogenous levels of Islet-2 protein.
<b>Formulation</b>	Liquid in PBS containing 50% glycerol, 0.5% BSA and 0.02% sodium azide.
<b>Source</b>	Polyclonal, Rabbit,IgG
<b>Purification</b>	The antibody was affinity-purified from rabbit antiserum by affinity-chromatography using epitope-specific immunogen.
<b>Dilution</b>	WB 1:500-2000;IHC-p 1:50-300
<b>Concentration</b>	1 mg/ml
<b>Purity</b>	≥90%
<b>Storage Stability</b>	-20°C/1 year
<b>Synonyms</b>	ISL2; Insulin gene enhancer protein ISL-2; Islet-2
<b>Observed Band</b>	40kD
<b>Cell Pathway</b>	Nucleus .
<b>Tissue Specificity</b>	Epithelium, Eye,
<b>Function</b>	function:Transcriptional factor that defines subclasses of motoneurons that segregate into columns in the spinal cord and select distinct axon pathways.,similarity:Contains 1 homeobox DNA-binding domain.,similarity:Contains 2 LIM zinc-binding domains.,
<b>Background</b>	function:Transcriptional factor that defines subclasses of motoneurons that segregate into columns in the spinal cord and select distinct axon pathways.,similarity:Contains 1 homeobox DNA-binding domain.,similarity:Contains 2 LIM zinc-binding domains.,

Nanjing BYabscience technology Co.,Ltd



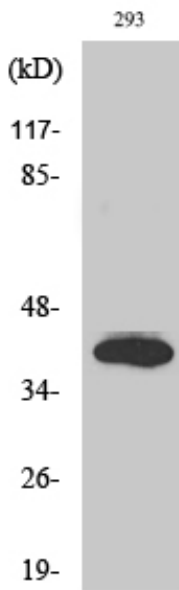
**matters needing attention**

Avoid repeated freezing and thawing!

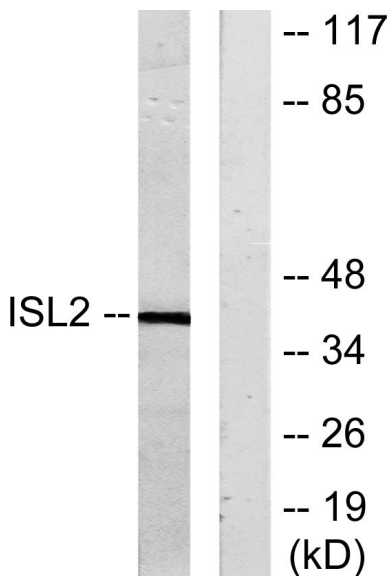
**Usage suggestions**

This product can be used in immunological reaction related experiments. For more information, please consult technical personnel.

## Products Images

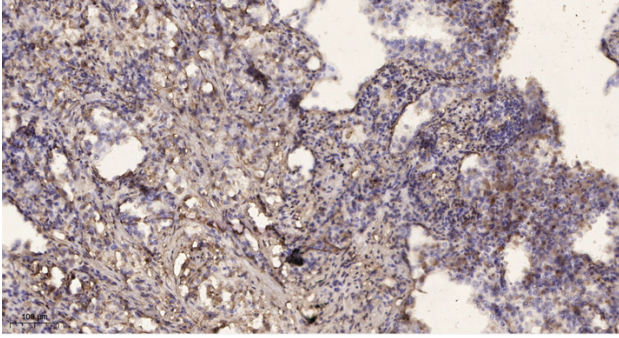


Western Blot analysis of various cells using Islet-2 Polyclonal Antibody diluted at 1:500 cells nucleus extracted by Minute TM Cytoplasmic and Nuclear Fractionation kit (SC-003, Inventibiotec, MN, USA).



Western blot analysis of lysates from 293 cells, using ISL2 Antibody. The lane on the right is blocked with the synthesized peptide.

Nanjing BYabscience technology Co.,Ltd



Immunohistochemical analysis of paraffin-embedded human lung cancer. 1, Antibody was diluted at 1:200(4° overnight). 2, Tris-EDTA,pH9.0 was used for antigen retrieval. 3,Secondary antibody was diluted at 1:200(room temperature, 45min).