



# HSF-27 Polyclonal Antibody

<b>Catalog No</b>	BYab-01818
<b>Isotype</b>	IgG
<b>Reactivity</b>	Human;Mouse;Rat
<b>Applications</b>	WB;IHC;IF;ELISA
<b>Gene Name</b>	CDK5RAP3
<b>Protein Name</b>	CDK5 regulatory subunit-associated protein 3
<b>Immunogen</b>	The antiserum was produced against synthesized peptide derived from human CDK5RAP3. AA range:341-390
<b>Specificity</b>	HSF-27 Polyclonal Antibody detects endogenous levels of HSF-27 protein.
<b>Formulation</b>	Liquid in PBS containing 50% glycerol, 0.5% BSA and 0.02% sodium azide.
<b>Source</b>	Polyclonal, Rabbit,IgG
<b>Purification</b>	The antibody was affinity-purified from rabbit antiserum by affinity-chromatography using epitope-specific immunogen.
<b>Dilution</b>	WB: 1/500 - 1/2000. IHC: 1/100 - 1/300. ELISA: 1/5000.. IF 1:50-200
<b>Concentration</b>	1 mg/ml
<b>Purity</b>	≥90%
<b>Storage Stability</b>	-20°C/1 year
<b>Synonyms</b>	CDK5RAP3; IC53; MSTP016; OK/SW-cl.114; PP1553; CDK5 regulatory subunit-associated protein 3; CDK5 activator-binding protein C53; Protein HSF-27
<b>Observed Band</b>	60kD
<b>Cell Pathway</b>	Nucleus . Cytoplasm . Cytoplasm, cytoskeleton, microtubule organizing center, centrosome . Colocalizes and associates with microtubules. .
<b>Tissue Specificity</b>	Ubiquitously expressed (PubMed:12054757, PubMed:10721722). Expressed in heart, brain, placenta, lung, liver, skeletal muscle, kidney and pancreas. Isoform 3 is expressed in kidney, liver, skeletal muscle and placenta (PubMed:12737517).
<b>Function</b>	function:Potential regulator of CDK5 activity. May be involved in cell proliferation. Regulates CDK5 activity via its interaction with CDK5R1.,PTM:Phosphorylated in vitro by CDK5.,similarity:Belongs to the CDK5RAP3 family.,subunit:Interacts with CDK5R1. This interaction is prevented by the association between CDK5R1 and CDK5RAP3 (By similarity). Interacts with the enteric adenovirus serotype 41 fiber protein.,tissue specificity:Ubiquitous. Expressed in heart, brain, placenta, lung, liver, skeletal muscle, kidney and pancreas. Isoform 3 is expressed in kidney,

Nanjing BYabscience technology Co.,Ltd



liver, skeletal muscle and placenta.,

**Background**

This gene encodes a protein that has been reported to function in signaling pathways governing transcriptional regulation and cell cycle progression. It may play a role in tumorigenesis and metastasis. A pseudogene of this gene is located on the long arm of chromosome 20. Alternative splicing results in multiple transcript variants that encode different isoforms. [provided by RefSeq, May 2013],

**matters needing attention**

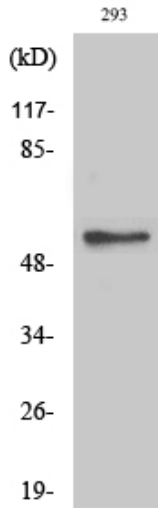
Avoid repeated freezing and thawing!

**Usage suggestions**

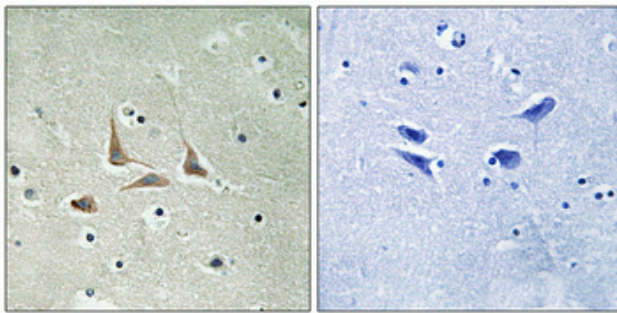
This product can be used in immunological reaction related experiments. For more information, please consult technical personnel.



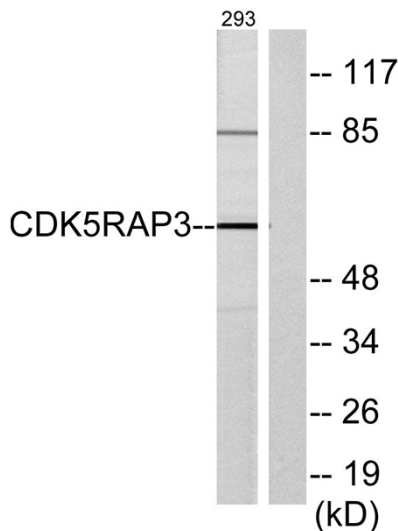
## Products Images



Western Blot analysis of various cells using HSF-27 Polyclonal Antibody diluted at 1:2000



Immunohistochemical analysis of paraffin-embedded Human brain. Antibody was diluted at 1:100(4° overnight). High-pressure and temperature Tris-EDTA, pH8.0 was used for antigen retrieval. Negative control (right) obtained from antibody was pre-absorbed by immunogen peptide.



Western blot analysis of lysates from 293 cells, using CDK5RAP3 Antibody. The lane on the right is blocked with the synthesized peptide.