



HSF2 Polyclonal Antibody

Catalog No	BYab-01817
Isotype	IgG
Reactivity	Human;Mouse;Rat
Applications	WB;IHC;IF;ELISA
Gene Name	HSF2
Protein Name	Heat shock factor protein 2
Immunogen	The antiserum was produced against synthesized peptide derived from human HSF2. AA range:401-450
Specificity	HSF2 Polyclonal Antibody detects endogenous levels of HSF2 protein.
Formulation	Liquid in PBS containing 50% glycerol, 0.5% BSA and 0.02% sodium azide.
Source	Polyclonal, Rabbit,IgG
Purification	The antibody was affinity-purified from rabbit antiserum by affinity-chromatography using epitope-specific immunogen.
Dilution	WB: 1/500 - 1/2000. IHC: 1/100 - 1/300. ELISA: 1/20000.. IF 1:50-200
Concentration	1 mg/ml
Purity	≥90%
Storage Stability	-20°C/1 year
Synonyms	HSF2; HSTF2; Heat shock factor protein 2; HSF 2; Heat shock transcription factor 2; HSTF 2
Observed Band	85kD
Cell Pathway	Cytoplasm . Nucleus . Cytoplasmic during normal growth and moves to the nucleus upon activation.
Tissue Specificity	Bladder,Brain,PCR rescued clones,Testis,
Function	function:DNA-binding protein that specifically binds heat shock promoter elements (HSE) and activates transcription. In higher eukaryotes, HSF is unable to bind to the HSE unless the cells are heat shocked.,similarity:Belongs to the HSF family.,subcellular location:Cytoplasmic during normal growth and moves to the nucleus upon activation.,subunit:DNA-binding homotrimer in stressed or heat shocked cells, otherwise found as a homodimer.,
Background	heat shock transcription factor 2(HSF2) Homo sapiens The protein encoded by this gene belongs to the HSF family of transcription factors that bind specifically to the heat-shock promoter element and activate transcription. Heat

Nanjing BYabscience technology Co.,Ltd



shock transcription factors activate heat-shock response genes under conditions of heat or other stresses. Alternatively spliced transcript variants encoding different isoforms have been found for this gene. [provided by RefSeq, Jul 2011],

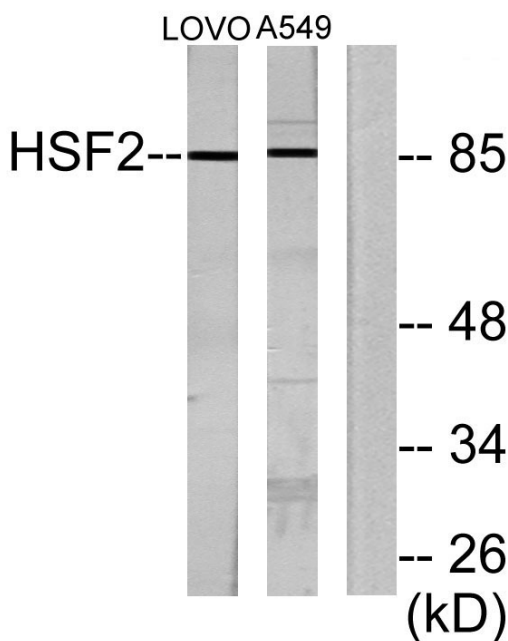
matters needing attention

Avoid repeated freezing and thawing!

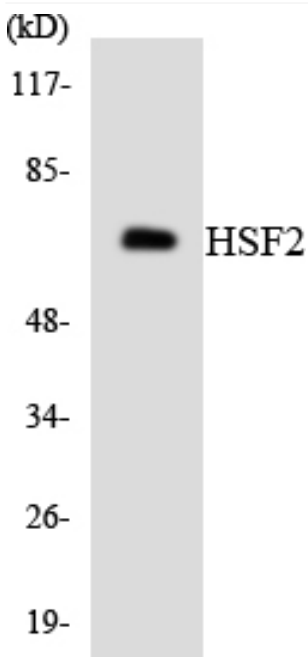
Usage suggestions

This product can be used in immunological reaction related experiments. For more information, please consult technical personnel.

Products Images

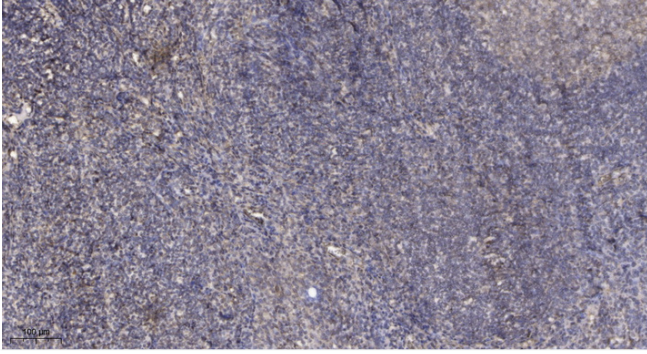


Western blot analysis of lysates from LOVO and A549 cells, using HSF2 Antibody. The lane on the right is blocked with the synthesized peptide.



Western blot analysis of the lysates from HeLa cells using HSF2 antibody.

Nanjing BYabscience technology Co.,Ltd



Immunohistochemical analysis of paraffin-embedded human tonsil. 1, Antibody was diluted at 1:200(4° overnight). 2, Tris-EDTA,pH9.0 was used for antigen retrieval. 3,Secondary antibody was diluted at 1:200(room temperature, 45min).