



hnRNP LL Polyclonal Antibody

Catalog No	BYab-01810
Isotype	IgG
Reactivity	Human;Mouse;Rat
Applications	WB;IHC;IF;ELISA
Gene Name	HNRPLL
Protein Name	Heterogeneous nuclear ribonucleoprotein L-like
Immunogen	The antiserum was produced against synthesized peptide derived from human HNRPLL. AA range:241-290
Specificity	hnRNP LL Polyclonal Antibody detects endogenous levels of hnRNP LL protein.
Formulation	Liquid in PBS containing 50% glycerol, 0.5% BSA and 0.02% sodium azide.
Source	Polyclonal, Rabbit,IgG
Purification	The antibody was affinity-purified from rabbit antiserum by affinity-chromatography using epitope-specific immunogen.
Dilution	WB: 1/500 - 1/2000. IHC: 1/100 - 1/300. ELISA: 1/20000.. IF 1:50-200
Concentration	1 mg/ml
Purity	≥90%
Storage Stability	-20°C/1 year
Synonyms	HNRPLL; SRRF; BLOCK24; Heterogeneous nuclear ribonucleoprotein L-like; hnRNPLL; Stromal RNA-regulating factor
Observed Band	60kD
Cell Pathway	nucleus,membrane,viral nucleocapsid,intracellular ribonucleoprotein complex,
Tissue Specificity	Widely expressed. Detected in bone marrow stroma cells, skeletal muscle, heart, placenta, pancreas, kidney and lung.
Function	function:May bind RNA and play a role in mRNA processing.,similarity:Contains 3 RRM (RNA recognition motif) domains.,tissue specificity:Widely expressed. Detected in bone marrow stroma cells, skeletal muscle, heart, placenta, pancreas, kidney and lung.,
Background	heterogeneous nuclear ribonucleoprotein L like(HNRNPLL) Homo sapiens HNRNPLL is a master regulator of activation-induced alternative splicing in T cells. In particular, it alters splicing of CD45 (PTPRC; MIM 151460), a tyrosine phosphatase essential for T-cell development and activation (Oberdoerffer et al., 2008 [PubMed 18669861]).[supplied by OMIM, Aug 2008],

Nanjing BYabscience technology Co.,Ltd



matters needing attention

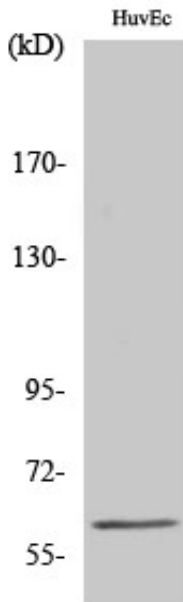
Avoid repeated freezing and thawing!

Usage suggestions

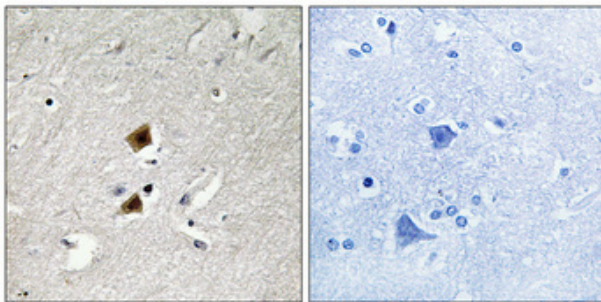
This product can be used in immunological reaction related experiments. For more information, please consult technical personnel.



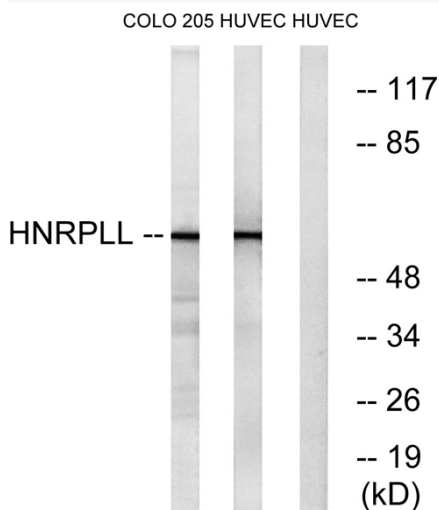
Products Images



Western Blot analysis of various cells using hnRNP LL Polyclonal Antibody cells nucleus extracted by Minute TM Cytoplasmic and Nuclear Fractionation kit (SC-003, Inventbiotech, MN, USA).



Immunohistochemical analysis of paraffin-embedded Human brain. Antibody was diluted at 1:100 (4° overnight). High-pressure and temperature Tris-EDTA, pH8.0 was used for antigen retrieval. Negative control (right) obtained from antibody was pre-absorbed by immunogen peptide.



Western blot analysis of lysates from HUVEC and COLO cells, using HNRPLL Antibody. The lane on the right is blocked with the synthesized peptide.

Nanjing BYabscience technology Co.,Ltd