



hnRNP A1 Polyclonal Antibody

Catalog No	BYab-01798
Isotype	IgG
Reactivity	Human;Mouse;Rat
Applications	WB;IHC;IF;ELISA
Gene Name	HNRNPA1
Protein Name	Heterogeneous nuclear ribonucleoprotein A1
Immunogen	The antiserum was produced against synthesized peptide derived from human hnRNP A1. AA range:51-100
Specificity	hnRNP A1 Polyclonal Antibody detects endogenous levels of hnRNP A1 protein.
Formulation	Liquid in PBS containing 50% glycerol, 0.5% BSA and 0.02% sodium azide.
Source	Polyclonal, Rabbit,IgG
Purification	The antibody was affinity-purified from rabbit antiserum by affinity-chromatography using epitope-specific immunogen.
Dilution	Western Blot: 1/500 - 1/2000. Immunohistochemistry: 1/100 - 1/300. Immunofluorescence: 1/200 - 1/1000. ELISA: 1/20000. Not yet tested in other applications.
Concentration	1 mg/ml
Purity	≥90%
Storage Stability	-20°C/1 year
Synonyms	HNRNPA1; HNRPA1; Heterogeneous nuclear ribonucleoprotein A1; hnRNP A1; Helix-destabilizing protein; Single-strand RNA-binding protein; hnRNP core protein A1
Observed Band	33kD
Cell Pathway	Nucleus . Cytoplasm . Localized in cytoplasmic mRNP granules containing untranslated mRNAs. Shuttles continuously between the nucleus and the cytoplasm along with mRNA. Component of ribonucleosomes (PubMed:17289661). .; Cytoplasm . (Microbial infection) In the course of viral infection, colocalizes with HCV NS5B at speckles in the cytoplasm in a HCV-replication dependent manner. .; Nucleus . (Microbial infection) SARS coronavirus-2/SARS-CoV-2 ORF6 protein increases accumulation to the nucleus.
Tissue Specificity	Bone marrow,Cervix,Cervix carcinoma,Epithelium,Eye,Fetal br
Function	function:Involved in the packaging of pre-mRNA into hnRNP particles, transport of

Nanjing BYabscience technology Co.,Ltd



poly(A) mRNA from the nucleus to the cytoplasm and may modulate splice site selection. .PTM:Arg-194, Arg-206 and Arg-225 are dimethylated, probably to asymmetric dimethylarginine. .similarity:Contains 2 RRM (RNA recognition motif) domains. .subcellular location:Shuttles continuously between the nucleus and the cytoplasm along with mRNA. Component of ribonucleosomes. .subunit:Identified in the spliceosome C complex, at least composed of AQR, ASCC3L1, C19orf29, CDC40, CDC5L, CRNKL1, DDX23, DDX41, DDX48, DDX5, DGCR14, DHX35, DHX38, DHX8, EFTUD2, FRG1, GPATC1, HNRNPA1, HNRNPA2B1, HNRPA3, HNRNPC, HNRPF, HNRPH1, HNRPK, HNRPM, HNRNPR, HNRNPU, KIAA1160, KIAA1604, LSM2, LSM3, MAGOH, MORG1, PABPC1, PLRG1, PNN, PPIE, PPIL1, PPIL3, PPWD1, PRPF19, PRPF4B, PRPF6, PRPF8, RALY, RBM22, RBM8A, RBMX, SART1, SF3A1, SF3A2, SF3A3, S

Background

This gene encodes a member of a family of ubiquitously expressed heterogeneous nuclear ribonucleoproteins (hnRNPs), which are RNA-binding proteins that associate with pre-mRNAs in the nucleus and influence pre-mRNA processing, as well as other aspects of mRNA metabolism and transport. The protein encoded by this gene is one of the most abundant core proteins of hnRNP complexes and plays a key role in the regulation of alternative splicing. Mutations in this gene have been observed in individuals with amyotrophic lateral sclerosis 20. Multiple alternatively spliced transcript variants have been found. There are numerous pseudogenes of this gene distributed throughout the genome. [provided by RefSeq, Feb 2016],

matters needing attention

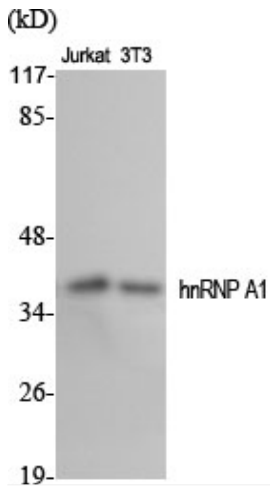
Avoid repeated freezing and thawing!

Usage suggestions

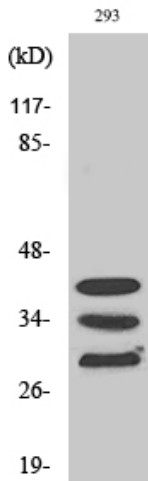
This product can be used in immunological reaction related experiments. For more information, please consult technical personnel.



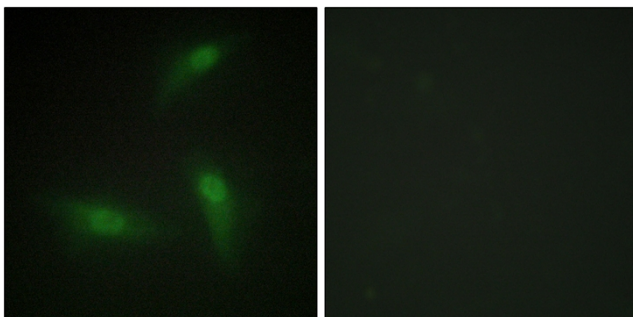
Products Images



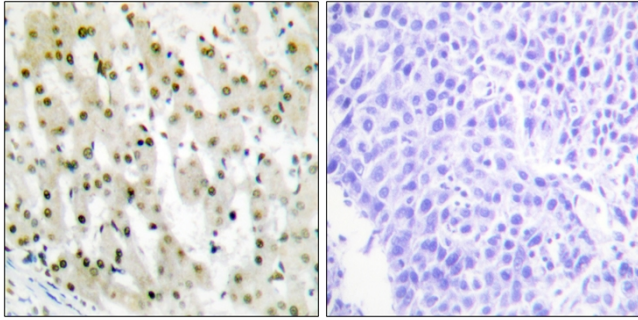
Western Blot analysis of various cells using hnRNP A1 Polyclonal Antibody diluted at 1:2000



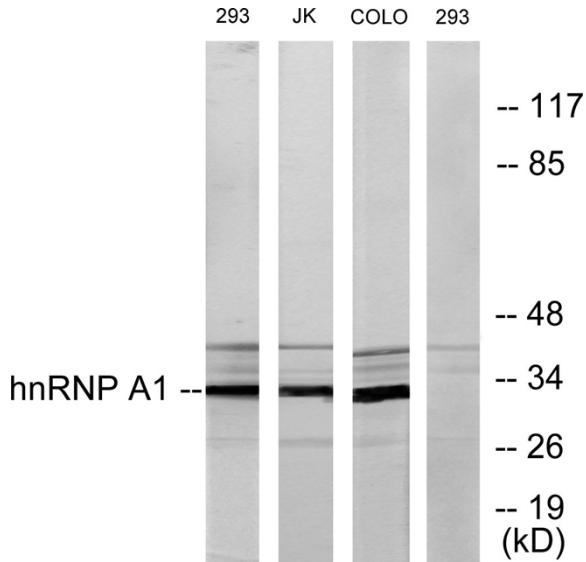
Western Blot analysis of COLO205 cells using hnRNP A1 Polyclonal Antibody diluted at 1:2000



Immunofluorescence analysis of HeLa cells, using hnRNP A1 Antibody. The picture on the right is blocked with the synthesized peptide.



Immunohistochemistry analysis of paraffin-embedded human liver carcinoma tissue, using hnRNP A1 Antibody. The picture on the right is blocked with the synthesized peptide.



Western blot analysis of lysates from 293, Jurkat, and COLO205 cells, using hnRNP A1 Antibody. The lane on the right is blocked with the synthesized peptide.