



Histone H2B Polyclonal Antibody

| | |
|---------------------------|--|
| Catalog No | BYab-01787 |
| Isotype | IgG |
| Reactivity | Human;Mouse;Monkey |
| Applications | WB;IHC;IF;ELISA |
| Gene Name | H2BFS |
| Protein Name | Histone H2B type F-S |
| Immunogen | The antiserum was produced against synthesized peptide derived from human Histone H2B. AA range:10-59 |
| Specificity | Histone H2B Polyclonal Antibody detects endogenous levels of Histone H2B protein. |
| Formulation | Liquid in PBS containing 50% glycerol, 0.5% BSA and 0.02% sodium azide. |
| Source | Polyclonal, Rabbit,IgG |
| Purification | The antibody was affinity-purified from rabbit antiserum by affinity-chromatography using epitope-specific immunogen. |
| Dilution | Western Blot: 1/500 - 1/2000. Immunohistochemistry: 1/100 - 1/300. Immunofluorescence: 1/200 - 1/1000. ELISA: 1/5000. Not yet tested in other applications. |
| Concentration | 1 mg/ml |
| Purity | ≥90% |
| Storage Stability | -20°C/1 year |
| Synonyms | H2BFS; Histone H2B type F-S; Histone H2B.s; H2B/s |
| Observed Band | 14kD |
| Cell Pathway | Nucleus. Chromosome. |
| Tissue Specificity | |
| Function | DNA packaging, chromatin organization, chromatin assembly or disassembly, nucleosome assembly, defense response, response to bacterium, chromatin assembly, cellular macromolecular complex subunit organization, cellular macromolecular complex assembly, nucleosome organization, defense response to bacterium, macromolecular complex subunit organization, chromosome organization, macromolecular complex assembly, protein-DNA complex assembly, |
| Background | H2BFS is a Pseudogene. Histone H2B type 1-H is a core component of nucleosome. Nucleosomes wrap and compact DNA into chromatin, limiting DNA |

Nanjing BYabscience technology Co.,Ltd



accessibility to the cellular machineries which require DNA as a template. Histones thereby play a central role in transcription regulation, DNA repair, DNA replication and chromosomal stability. DNA accessibility is regulated via a complex set of post-translational modifications of histones, also called histone code, and nucleosome remodeling. Has broad antibacterial activity. May contribute to the formation of the functional antimicrobial barrier of the colonic epithelium, and to the bactericidal activity of amniotic fluid. Diseases associated with H2BFS include endometrial stromal sarcoma. Among its related pathways are Packaging Of Telomere Ends. Gene Ontology (GO) annotations related to this gene include sequence-specific DNA binding and protein heterodimerization activity. An important paralog of this gene is HIST1H2BH.

matters needing attention

Avoid repeated freezing and thawing!

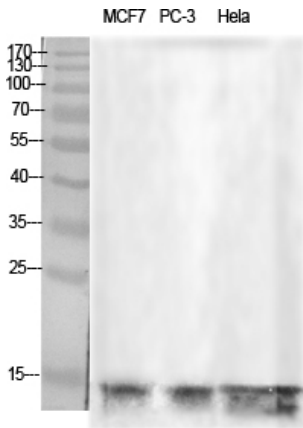
Usage suggestions

This product can be used in immunological reaction related experiments. For more information, please consult technical personnel.

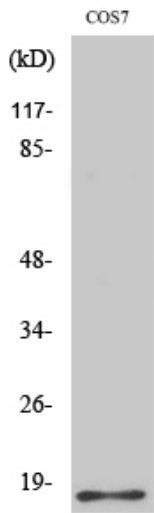
Nanjing BYabscience technology Co.,Ltd



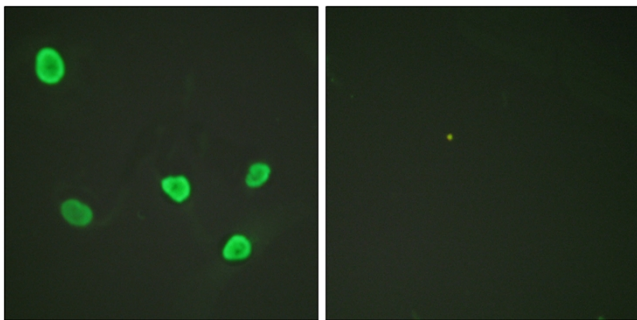
Products Images



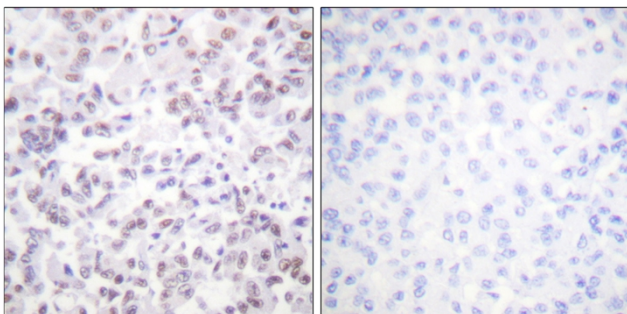
Western Blot analysis of various cells using Histone H2B Polyclonal Antibody diluted at 1:1000 cells nucleus extracted by Minute TM Cytoplasmic and Nuclear Fractionation kit (SC-003, Inventbiotech, MN, USA).



Western Blot analysis of COS7 cells using Histone H2B Polyclonal Antibody diluted at 1:1000 cells nucleus extracted by Minute TM Cytoplasmic and Nuclear Fractionation kit (SC-003, Inventbiotech, MN, USA).

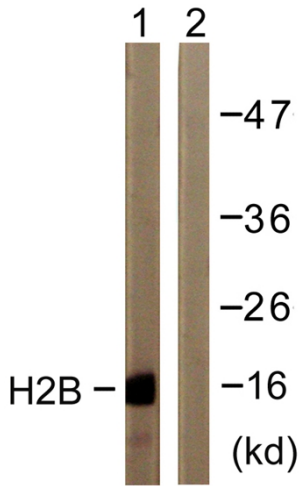


Immunofluorescence analysis of HeLa cells, using Histone H2B Antibody. The picture on the right is blocked with the synthesized peptide.



Immunohistochemistry analysis of paraffin-embedded human breast carcinoma tissue, using Histone H2B Antibody. The picture on the right is blocked with the synthesized peptide.

Nanjing BYabscience technology Co.,Ltd



Western blot analysis of lysates from COS7 cells, treated with TSA 400nM 24h, using Histone H2B Antibody. The lane on the right is blocked with the synthesized peptide.