



# HEI10 Polyclonal Antibody

<b>Catalog No</b>	BYab-01769
<b>Isotype</b>	IgG
<b>Reactivity</b>	Human;Rat;Mouse;
<b>Applications</b>	WB;IHC;IF;ELISA
<b>Gene Name</b>	CCNB1IP1
<b>Protein Name</b>	E3 ubiquitin-protein ligase CCNB1IP1
<b>Immunogen</b>	The antiserum was produced against synthesized peptide derived from human CCNB1IP1. AA range:201-250
<b>Specificity</b>	HEI10 Polyclonal Antibody detects endogenous levels of HEI10 protein.
<b>Formulation</b>	Liquid in PBS containing 50% glycerol, 0.5% BSA and 0.02% sodium azide.
<b>Source</b>	Polyclonal, Rabbit,IgG
<b>Purification</b>	The antibody was affinity-purified from rabbit antiserum by affinity-chromatography using epitope-specific immunogen.
<b>Dilution</b>	WB: 1/500 - 1/2000. IHC: 1/100 - 1/300. ELISA: 1/40000.. IF 1:50-200
<b>Concentration</b>	1 mg/ml
<b>Purity</b>	≥90%
<b>Storage Stability</b>	-20°C/1 year
<b>Synonyms</b>	CCNB1IP1; C14orf18; HEI10; E3 ubiquitin-protein ligase CCNB1IP1; Cyclin-B1-interacting protein 1; Human enhancer of invasion 10
<b>Observed Band</b>	32kD
<b>Cell Pathway</b>	Nucleus. Chromosome. Associates to the synaptonemal complex.
<b>Tissue Specificity</b>	Highly expressed in heart. Detected at intermediate levels in liver and kidney, and at low levels in placenta, brain and lung.
<b>Function</b>	function:E3 ubiquitin-protein ligase. Modulates cyclin B levels and participates in the regulation of cell cycle progression through the G2 phase. Overexpression causes delayed entry into mitosis.,pathway:Protein modification; protein ubiquitination.,PTM:Phosphorylated by CDC2 on serine or threonine residues (in vitro).,PTM:Ubiquitinated; autoubiquitinated.,similarity:Contains 1 RING-type zinc finger.,subcellular location:May associate with segregating chromosomes during metaphase and anaphase.,subunit:Binds CCNB1 and UBE2L3.,tissue specificity:Highly expressed in heart. Detected at intermediate levels in liver and kidney, and at low levels in placenta, brain and lung.,

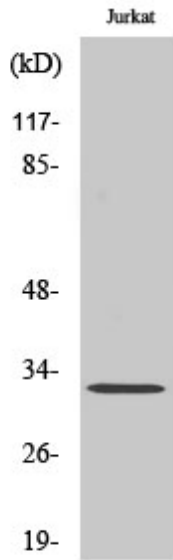
Nanjing BYabscience technology Co.,Ltd



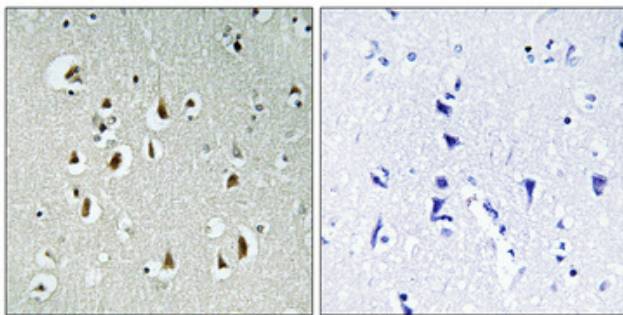
<b>Background</b>	HEI10 is a member of the E3 ubiquitin ligase family and functions in progression of the cell cycle through G(2)/M.[supplied by OMIM, Apr 2004],
<b>matters needing attention</b>	Avoid repeated freezing and thawing!
<b>Usage suggestions</b>	This product can be used in immunological reaction related experiments. For more information, please consult technical personnel.



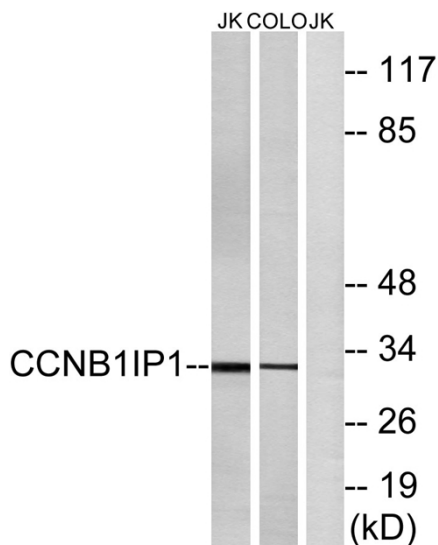
## Products Images



Western Blot analysis of various cells using HEI10 Polyclonal Antibody diluted at 1:2000 cells nucleus extracted by Minute TM Cytoplasmic and Nuclear Fractionation kit (SC-003, Inventibiotech, MN, USA).



Immunohistochemical analysis of paraffin-embedded Human brain. Antibody was diluted at 1:100 (4° overnight). High-pressure and temperature Tris-EDTA, pH 8.0 was used for antigen retrieval. Negative control (right) obtained from antibody was pre-absorbed by immunogen peptide.



Western blot analysis of lysates from Jurkat and COLO cells, using CCNB1IP1 Antibody. The lane on the right is blocked with the synthesized peptide.

Nanjing BYabscience technology Co.,Ltd