



GIDRP88 Polyclonal Antibody

Catalog No	BYab-01749
Isotype	IgG
Reactivity	Human;Mouse;Monkey
Applications	WB;IHC;IF;ELISA
Gene Name	R3HCC1L
Protein Name	R3H and coiled-coil domain-containing protein 1-like
Immunogen	The antiserum was produced against synthesized peptide derived from human GIDRP88. AA range:721-770
Specificity	GIDRP88 Polyclonal Antibody detects endogenous levels of GIDRP88 protein.
Formulation	Liquid in PBS containing 50% glycerol, 0.5% BSA and 0.02% sodium azide.
Source	Polyclonal, Rabbit,IgG
Purification	The antibody was affinity-purified from rabbit antiserum by affinity-chromatography using epitope-specific immunogen.
Dilution	WB: 1/500 - 1/2000. IHC: 1/100 - 1/300. ELISA: 1/40000.. IF 1:50-200
Concentration	1 mg/ml
Purity	≥90%
Storage Stability	-20°C/1 year
Synonyms	R3HCC1L; C10orf28; GIDRP88; R3H and coiled-coil domain-containing protein 1-like; Growth inhibition and differentiation-related protein 88; Putative mitochondrial space protein 32.1
Observed Band	88kD
Cell Pathway	exon-exon junction complex,
Tissue Specificity	Expressed in placenta.
Function	tissue specificity:Expressed in placenta.,
Background	tissue specificity:Expressed in placenta.,
matters needing attention	Avoid repeated freezing and thawing!

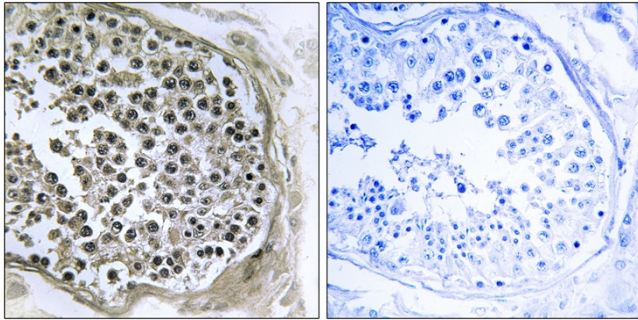
Nanjing BYabscience technology Co.,Ltd



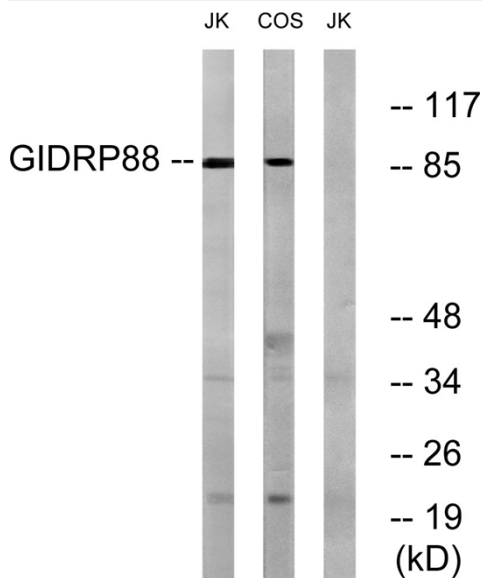
Usage suggestions

This product can be used in immunological reaction related experiments. For more information, please consult technical personnel.

Products Images



Immunohistochemistry analysis of paraffin-embedded human testis tissue, using GIDRP88 Antibody. The picture on the right is blocked with the synthesized peptide.



Western blot analysis of lysates from Jurkat and COS cells, using GIDRP88 Antibody. The lane on the right is blocked with the synthesized peptide.