



# GATA-6 Polyclonal Antibody

<b>Catalog No</b>	BYab-01747
<b>Isotype</b>	IgG
<b>Reactivity</b>	Human;Mouse;Rat
<b>Applications</b>	WB;ELISA
<b>Gene Name</b>	GATA6
<b>Protein Name</b>	Transcription factor GATA-6
<b>Immunogen</b>	The antiserum was produced against synthesized peptide derived from human GATA6. AA range:461-510
<b>Specificity</b>	GATA-6 Polyclonal Antibody detects endogenous levels of GATA-6 protein.
<b>Formulation</b>	Liquid in PBS containing 50% glycerol, 0.5% BSA and 0.02% sodium azide.
<b>Source</b>	Polyclonal, Rabbit,IgG
<b>Purification</b>	The antibody was affinity-purified from rabbit antiserum by affinity-chromatography using epitope-specific immunogen.
<b>Dilution</b>	Western Blot: 1/500 - 1/2000. ELISA: 1/10000. Not yet tested in other applications.
<b>Concentration</b>	1 mg/ml
<b>Purity</b>	≥90%
<b>Storage Stability</b>	-20°C/1 year
<b>Synonyms</b>	GATA6; Transcription factor GATA-6; GATA-binding factor 6
<b>Observed Band</b>	45kD
<b>Cell Pathway</b>	Nucleus .
<b>Tissue Specificity</b>	Expressed in heart, gut and gut-derived tissues. Expressed in skin upper pilosebaceous unit. Expression is decreased or lost in acne lesions (PubMed:33082341).
<b>Function</b>	function:Thought to be important for regulating terminal differentiation and/or proliferation.,similarity:Contains 2 GATA-type zinc fingers.,tissue specificity:Expressed in heart, gut and gut-derived tissues.,
<b>Background</b>	This gene is a member of a small family of zinc finger transcription factors that play an important role in the regulation of cellular differentiation and organogenesis during vertebrate development. This gene is expressed during early embryogenesis and localizes to endo- and mesodermally derived cells during later embryogenesis and thereby plays an important role in gut, lung, and heart development. Mutations in this gene are associated with several congenital

**Nanjing BYabscience technology Co.,Ltd**



defects. [provided by RefSeq, Mar 2012],

**matters needing attention**

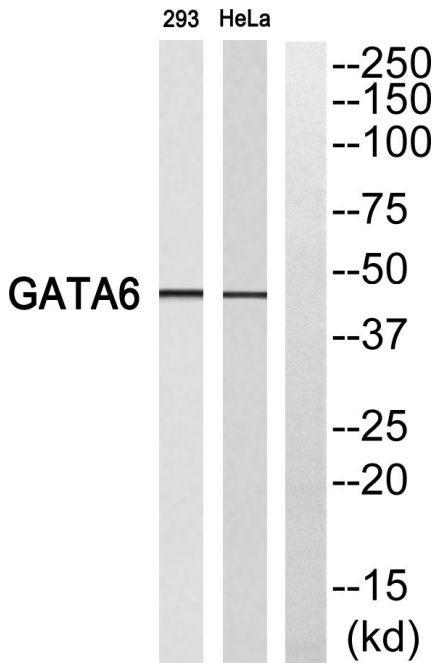
Avoid repeated freezing and thawing!

**Usage suggestions**

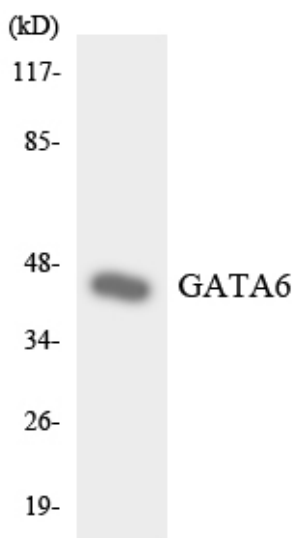
This product can be used in immunological reaction related experiments. For more information, please consult technical personnel.



## Products Images



Western blot analysis of GATA6 Antibody. The lane on the right is blocked with the GATA6 peptide.



Western blot analysis of the lysates from HepG2 cells using GATA6 antibody.