



# GATA-5 Polyclonal Antibody

<b>Catalog No</b>	BYab-01746
<b>Isotype</b>	IgG
<b>Reactivity</b>	Human;Mouse
<b>Applications</b>	WB;IHC;IF;ELISA
<b>Gene Name</b>	GATA5
<b>Protein Name</b>	Transcription factor GATA-5
<b>Immunogen</b>	The antiserum was produced against synthesized peptide derived from human GATA-5. AA range:244-293
<b>Specificity</b>	GATA-5 Polyclonal Antibody detects endogenous levels of GATA-5 protein.
<b>Formulation</b>	Liquid in PBS containing 50% glycerol, 0.5% BSA and 0.02% sodium azide.
<b>Source</b>	Polyclonal, Rabbit,IgG
<b>Purification</b>	The antibody was affinity-purified from rabbit antiserum by affinity-chromatography using epitope-specific immunogen.
<b>Dilution</b>	WB: 1/500 - 1/2000. IHC: 1/100 - 1/300. ELISA: 1/10000.. IF 1:50-200
<b>Concentration</b>	1 mg/ml
<b>Purity</b>	≥90%
<b>Storage Stability</b>	-20°C/1 year
<b>Synonyms</b>	GATA5; Transcription factor GATA-5; GATA-binding factor 5
<b>Observed Band</b>	45kD
<b>Cell Pathway</b>	Nucleus .
<b>Tissue Specificity</b>	Uterus,
<b>Function</b>	function: Binds to the functionally important CEF-1 nuclear protein binding site in the cardiac-specific slow/cardiac troponin C transcriptional enhancer. May play an important role in the transcriptional program(s) that underlies smooth muscle cell diversity.,similarity: Contains 2 GATA-type zinc fingers.,
<b>Background</b>	The protein encoded by this gene is a transcription factor that contains two GATA-type zinc fingers. The encoded protein is known to bind to hepatocyte nuclear factor-1alpha (HNF-1alpha), and this interaction is essential for cooperative activation of the intestinal lactase-phlorizin hydrolase promoter. In other organisms, similar proteins may be involved in the establishment of cardiac smooth muscle cell diversity. [provided by RefSeq, Jul 2008],

Nanjing BYabscience technology Co.,Ltd



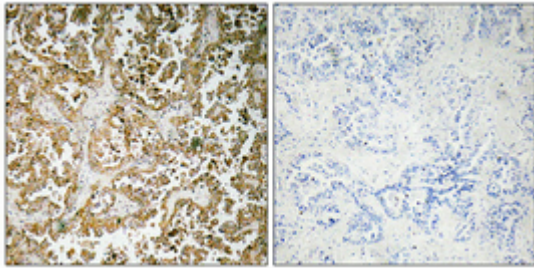
**matters needing attention**

Avoid repeated freezing and thawing!

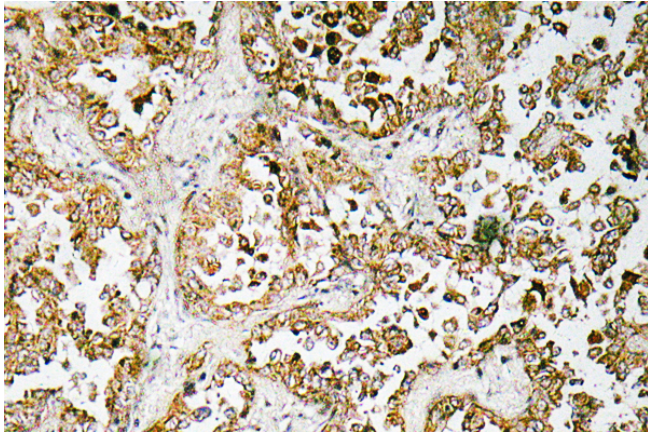
**Usage suggestions**

This product can be used in immunological reaction related experiments. For more information, please consult technical personnel.

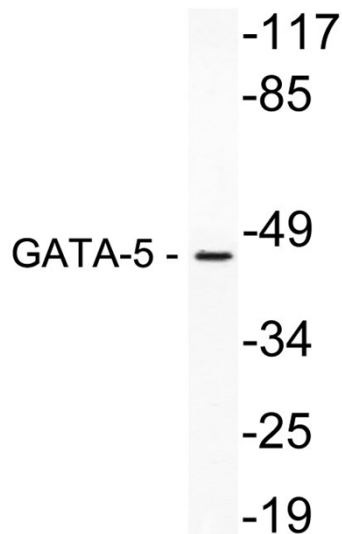
## Products Images



Immunohistochemical analysis of paraffin-embedded Human lung cancer. Antibody was diluted at 1:100(4° overnight). High-pressure and temperature Tris-EDTA,pH8.0 was used for antigen retrieval. Negative control (right) obtained from antibody was pre-absorbed by immunogen peptide.



Immunohistochemistry analysis of GATA-5 antibody in paraffin-embedded human lung carcinoma tissue.



Western blot analysis of lysate from NIH/3T3 cells, using GATA-5 antibody.

Nanjing BYabscience technology Co.,Ltd