



# FoxJ1 Polyclonal Antibody

<b>Catalog No</b>	BYab-01726
<b>Isotype</b>	IgG
<b>Reactivity</b>	Human;Mouse;Rat
<b>Applications</b>	WB;IHC;IF;ELISA
<b>Gene Name</b>	FOXJ1
<b>Protein Name</b>	Forkhead box protein J1
<b>Immunogen</b>	The antiserum was produced against synthesized peptide derived from human FOXJ1. AA range:271-320
<b>Specificity</b>	FoxJ1 Polyclonal Antibody detects endogenous levels of FoxJ1 protein.
<b>Formulation</b>	Liquid in PBS containing 50% glycerol, 0.5% BSA and 0.02% sodium azide.
<b>Source</b>	Polyclonal, Rabbit,IgG
<b>Purification</b>	The antibody was affinity-purified from rabbit antiserum by affinity-chromatography using epitope-specific immunogen.
<b>Dilution</b>	WB: 1/500 - 1/2000. IHC: 1/100 - 1/300. ELISA: 1/20000.. IF 1:50-200
<b>Concentration</b>	1 mg/ml
<b>Purity</b>	≥90%
<b>Storage Stability</b>	-20°C/1 year
<b>Synonyms</b>	FOXJ1; FKHL13; HFH4; Forkhead box protein J1; Forkhead-related protein FKHL13; Hepatocyte nuclear factor 3 forkhead homolog 4; HFH-4
<b>Observed Band</b>	60kD
<b>Cell Pathway</b>	Nucleus .
<b>Tissue Specificity</b>	Testis, oviduct, lung and brain cortex.
<b>Function</b>	developmental stage:Expressed in developing lung, kidney and central nervous system.,disease:Genetic variations in FOXJ1 may be associated with susceptibility to allergic rhinitis (ALRH) [MIM:607154]. Allergic rhinitis is a common disease of complex inheritance and is characterized by mucosal inflammation caused by allergen exposure.,function:May play an important role in cell fate determination during lung development and in spermatogenesis.,similarity:Contains 1 fork-head DNA-binding domain.,tissue specificity:Testis, oviduct, lung and brain cortex.,

Nanjing BYabscience technology Co.,Ltd



**Background**

This gene encodes a member of the forkhead family of transcription factors. Similar genes in zebrafish and mouse have been shown to regulate the transcription of genes that control the production of motile cilia. The mouse ortholog also functions in the determination of left-right asymmetry. Polymorphisms in this gene are associated with systemic lupus erythematosus and allergic rhinitis.[provided by RefSeq, Sep 2009],

**matters needing attention**

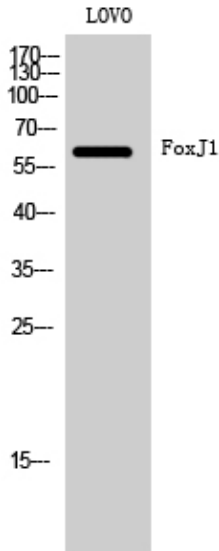
Avoid repeated freezing and thawing!

**Usage suggestions**

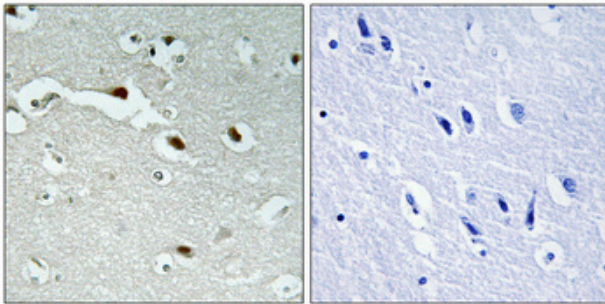
This product can be used in immunological reaction related experiments. For more information, please consult technical personnel.



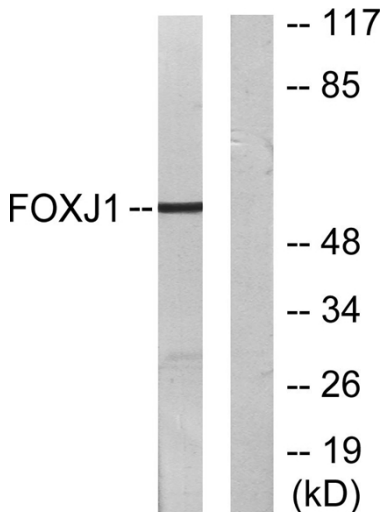
## Products Images



Western Blot analysis of LOVO cells using FoxJ1 Polyclonal Antibody cells nucleus extracted by Minute TM Cytoplasmic and Nuclear Fractionation kit (SC-003, Inventbiotech, MN, USA).



Immunohistochemical analysis of paraffin-embedded Human brain. Antibody was diluted at 1:100 (4° overnight). High-pressure and temperature Tris-EDTA, pH8.0 was used for antigen retrieval. Negative control (right) obtained from antibody was pre-absorbed by immunogen peptide.



Western blot analysis of lysates from LOVO cells, using FOXJ1 Antibody. The lane on the right is blocked with the synthesized peptide.