



FoxD4L1 Polyclonal Antibody

Catalog No	BYab-01723
Isotype	IgG
Reactivity	Human;Rat;Mouse;
Applications	WB;ELISA
Gene Name	FOXD4L1
Protein Name	Forkhead box protein D4-like 1
Immunogen	Synthesized peptide derived from FoxD4L1 . at AA range: 320-400
Specificity	FoxD4L1 Polyclonal Antibody detects endogenous levels of FoxD4L1 protein.
Formulation	Liquid in PBS containing 50% glycerol, 0.5% BSA and 0.02% sodium azide.
Source	Polyclonal, Rabbit,IgG
Purification	The antibody was affinity-purified from rabbit antiserum by affinity-chromatography using epitope-specific immunogen.
Dilution	Western Blot: 1/500 - 1/2000. ELISA: 1/40000. Not yet tested in other applications.
Concentration	1 mg/ml
Purity	≥90%
Storage Stability	-20°C/1 year
Synonyms	FOXD4L1; Forkhead box protein D4-like 1; FOXD4-like 1
Observed Band	45kD
Cell Pathway	Nucleus .
Tissue Specificity	Brain,Heart,Thymus,
Function	similarity:Contains 1 fork-head DNA-binding domain.,
Background	forkhead box D4-like 1(FOXD4L1) Homo sapiens This gene is a member of the forkhead/winged-helix (FOX) family of transcription factors with highly conserved FOX DNA-binding domains. Members of the FOX family of transcription factors are regulators of embryogenesis and may play a role in human cancer. This gene lies in a region of chromosome 2 that surrounds the site where two ancestral chromosomes fused to form human chromosome 2. This region is duplicated elsewhere in the human genome, primarily in subtelomeric and pericentromeric locations, thus multiple copies of this gene have been found. [provided by RefSeq, Jul 2008],

Nanjing BYabscience technology Co.,Ltd



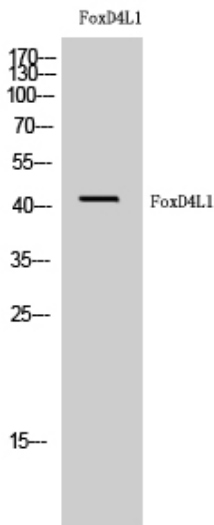
matters needing attention

Avoid repeated freezing and thawing!

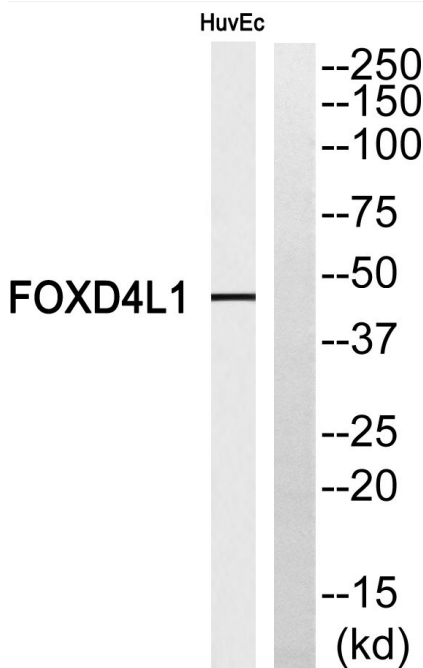
Usage suggestions

This product can be used in immunological reaction related experiments. For more information, please consult technical personnel.

Products Images



Western Blot analysis of HuvEc cells using FoxD4L1 Polyclonal Antibody cells nucleus extracted by Minute TM Cytoplasmic and Nuclear Fractionation kit (SC-003, Inventbiotech, MN, USA).



Western blot analysis of FOXD4L1 Antibody. The lane on the right is blocked with the FOXD4L1 peptide.

Nanjing BYabscience technology Co.,Ltd