



FoxD4/D4L Polyclonal Antibody

Catalog No	BYab-01722
Isotype	IgG
Reactivity	Human;Rat;Mouse;
Applications	WB;ELISA
Gene Name	FOXD4
Protein Name	Forkhead box protein D4
Immunogen	The antiserum was produced against synthesized peptide derived from human FOXD4/L2/L3/L4/L5/L6. AA range:281-330
Specificity	FoxD4/D4L Polyclonal Antibody detects endogenous levels of FoxD4/D4L protein.
Formulation	Liquid in PBS containing 50% glycerol, 0.5% BSA and 0.02% sodium azide.
Source	Polyclonal, Rabbit,IgG
Purification	The antibody was affinity-purified from rabbit antiserum by affinity-chromatography using epitope-specific immunogen.
Dilution	Western Blot: 1/500 - 1/2000. ELISA: 1/40000. Not yet tested in other applications.
Concentration	1 mg/ml
Purity	≥90%
Storage Stability	-20°C/1 year
Synonyms	FOXD4; FKHL9; FOXD4A; FREAC5; Forkhead box protein D4; Forkhead-related protein FKHL9; Forkhead-related transcription factor 5; FREAC-5; Myeloid factor-alpha; FOXD4L4; FOXD4B; Forkhead box protein D4-like 4; FOXD4-like 4; Forkhead box prote
Observed Band	46kD
Cell Pathway	Nucleus.
Tissue Specificity	Chondrosarcoma,Heart,PCR rescued clones,
Function	similarity:Contains 1 fork-head DNA-binding domain.,
Background	This gene encodes a member of the forkhead/winged helix-box (FOX) family of transcription factors. FOX transcription factors play critical roles in the regulation of multiple processes including metabolism, cell proliferation and gene expression during ontogenesis. Mutations in this gene are associated with a complex phenotype consisting of dilated cardiomyopathy, obsessive-compulsive disorders,

Nanjing BYabscience technology Co.,Ltd



and suicidality. [provided by RefSeq, Mar 2012],

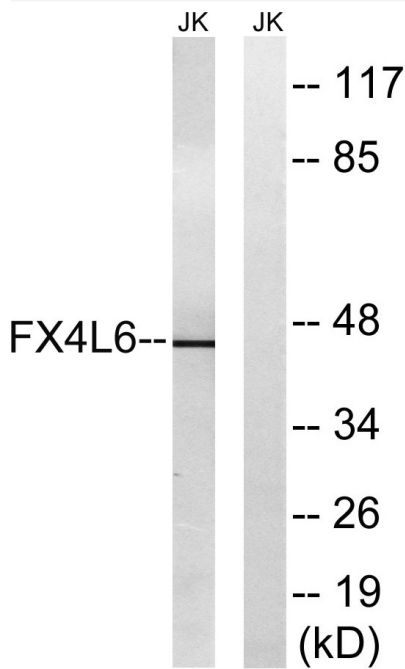
matters needing attention

Avoid repeated freezing and thawing!

Usage suggestions

This product can be used in immunological reaction related experiments. For more information, please consult technical personnel.

Products Images



Western blot analysis of lysates from Jurkat cells, using FOXD4/L2/L3/L4/L5/L6 Antibody. The lane on the right is blocked with the synthesized peptide.