



FoxB2 Polyclonal Antibody

Catalog No	BYab-01718
Isotype	IgG
Reactivity	Human;Mouse
Applications	WB;ELISA
Gene Name	FOXB2
Protein Name	Forkhead box protein B2
Immunogen	The antiserum was produced against synthesized peptide derived from human FOXB2. AA range:251-300
Specificity	FoxB2 Polyclonal Antibody detects endogenous levels of FoxB2 protein.
Formulation	Liquid in PBS containing 50% glycerol, 0.5% BSA and 0.02% sodium azide.
Source	Polyclonal, Rabbit,IgG
Purification	The antibody was affinity-purified from rabbit antiserum by affinity-chromatography using epitope-specific immunogen.
Dilution	Western Blot: 1/500 - 1/2000. ELISA: 1/40000. Not yet tested in other applications.
Concentration	1 mg/ml
Purity	≥90%
Storage Stability	-20°C/1 year
Synonyms	FOXB2; Forkhead box protein B2
Observed Band	46kD
Cell Pathway	Nucleus .
Tissue Specificity	
Function	function:Transcription factor.,similarity:Contains 1 fork-head DNA-binding domain.,
Background	function:Transcription factor.,similarity:Contains 1 fork-head DNA-binding domain.,
matters needing attention	Avoid repeated freezing and thawing!

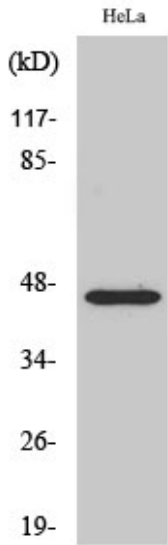
Nanjing BYabscience technology Co.,Ltd



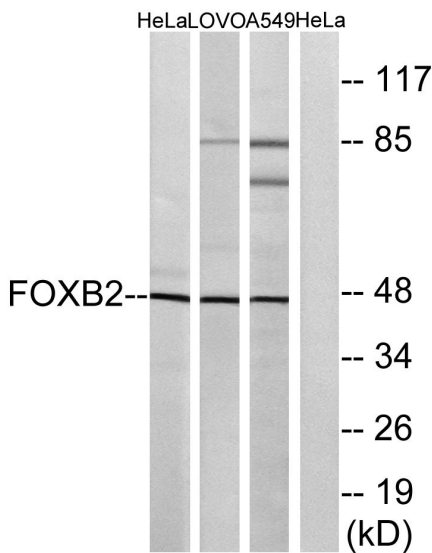
Usage suggestions

This product can be used in immunological reaction related experiments. For more information, please consult technical personnel.

Products Images



Western Blot analysis of various cells using FoxB2 Polyclonal Antibody cells nucleus extracted by Minute TM Cytoplasmic and Nuclear Fractionation kit (SC-003, Inventbiotech, MN, USA).



Western blot analysis of lysates from HeLa, LOVO, and A549 cells, using FOXB2 Antibody. The lane on the right is blocked with the synthesized peptide.

Nanjing BYabscience technology Co.,Ltd